



Shaping the  
connected world



# Mobile communication

In-building solutions  
and antenna line products

---

Catalogue 2023

**We are your  
specialist for  
reliable, high  
quality and  
innovative  
communication  
technologies.**



ESB is a global company Customer-focused with headquarters in Spain (Valencia) which manufactures and develops Mobile Communication solutions in different areas like macro, micro, indoor coverage, smallcells and camouflage antenna Solutions for Communication Service Providers around the world.

### **Our vision**

We trust in the efficient and sustainable telecom infrastructure as a primary driver in the international integration

### **Mission**

Communication technologies play an important role in the process of evolution.

They connect people and enable the world to be connected. ESB pursues an effective and responsible connection of the worlds' technologies. Demand of these technologies is constantly rising, as well as global data consumption. With more than 40 years experience, we are capable of meeting the most complex requirements and challenges.

"It is our mission to shape a connected world, continue to build it and improve its efficiency using innovative and sustainable technologies"

Our near future depends on new technologies. Due to our strong roots and experience, we will fight daily to achieve this environmental friendly connected world.

Esb mobile communication portfolio offers high-end Wireless products for all frequency bands and global standards, we are constantly evolving our portfolio to meet the market demand and in close cooperation with our customers and sales network, from the proof of concept to massive production.

## Our Values

ESB develops and sales telecom products on a global market. Working globally with the automotive and telecom industry brings the responsibility of working towards social and economic development and sustainability, as well as conducting business responsibly.

We work actively in our basic values: Innovation, cooperation, long-term approach and reduction of environmental impact.

**Innovation:** every day we pursue innovation in all we do. we focus on research, development and innovation (R & D & I). These 3 factors are the basis of our growth and our main difference compared to our competitors.

**Cooperation.** Working on product development gives us the opportunity to collaborate with any kind of company. We work effusively to maintain respectful and positive relations with all of our partners as well as suppliers, clients and everyone else whom we work with.

**Long-Term approach.** Developing products implies committing to long-term approaches with our partners and major investors. Having a long-term mind-set with regard to sustainability and management secures customer and owner value over time.

**Environmental friendly.** ESB works on daily basis to reduce visual impact of the telecommunication sector in our world. Therefore, product development moves towards the integration of the antenna with the environment.

**Quality Policy.** Quality is the best argument when it comes to competing on the market and represents a guarantee for the continuity and the future of any company.



国際線 乗り継ぎ  
International Transfer  
到着  
Arrivals  
↑

22

21

21

20 201 202

Sharing a New Journey



# Content



## ● In-building solutions

- Indoor Antennas **\_10**
- Low PIM Splitters **\_30**
- Low PIM Directional Couplers **\_40**
- RF Tappers **\_48**
- Standard Attenuators **\_50**
- Low PIM Attenuators **\_58**
- Low PIM Loads **\_64**

## ● Antenna line products

- Hybrid Combiners **\_72**
- Special Antennas **\_80**
- Smallcell Antennas **\_94**
- Multi-band Combiners **\_106**



# In-building solutions





We offer a broad product portfolio for in-building solutions consisting of antennas, splitters, couplers, combiners, low PIM attenuators, low PIM loads and many more components for our customers with the latest and most reliable technology available on the market for current and future mobile networks.

## ● In-building solutions

- Indoor Antennas **\_10**
- Low PIM Splitters **\_30**
- Low PIM Directional Couplers **\_40**
- RF Tappers **\_48**
- Standard Attenuators **\_50**
- Low PIM Attenuators **\_58**
- Low PIM Loads **\_64**

# Indoor antennas

---

ESB portfolio offers a wide variety of Low intermodulation (PIM3) indoor omni and directional panel antennas for each application. Customer can select from 1 port antenna up to 4 port antennas with different connector (4.3-10 & N) for the most demanding scenarios. All antennas have passed a comprehensive quality control check.

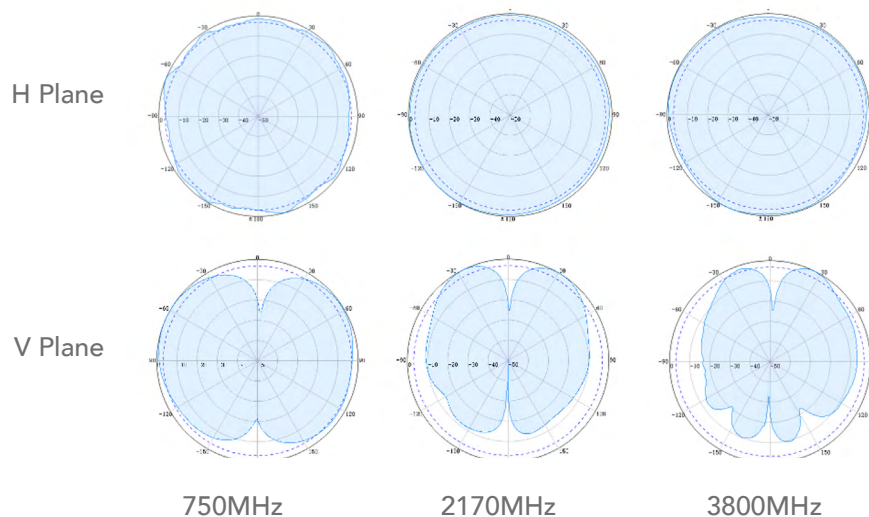
<b>Part Number</b>	<b>Description</b>	<b>Page</b>
78711019v01	1-Port Omni 698-4000 (SISO) N	12
78712019v01	1-Port Omni 698-4000 (SISO) 4.3-10	12
78711020	2-Port Omni 698-2700 (MIMO) N	13
78712020	2-Port Omni 698-2700 (MIMO) 4.3-10	13
78711030	2-Port Omni 698-4000 (MIMO) N	14
78712030	2-Port Omni 698-4000 (MIMO) 4.3-10	14
78712031	1-Port Omni 698-4000 (SISO) 4.3-10	15
78712033	1-Port Card Omni 698-4000 (SISO) 4.3-10	16
78712035	1-Port Slim Omni 698-4000 (SISO) 4.3-10	17
78712034	2-Port Slim Omni 698-4000 (MIMO) 4.3-10	18
78712032	2-Port Card Omni 698-4000 (MIMO) 4.3-10	19
78712036	2-Port Ultra-Thin Omni 698-6000 (MIMO) 4.3-10	20
78712041	1-Port Omni 380-6000 (SISO) 4.3-10	21
78712043	1-Port Omni Cubical 698-4000 (SISO) 4.3-10	22
78712045	1-Port Omni Cylindrical 698-4000 (SISO) 4.3-10	22
78713160	4-Port Omni MIMO 698-4000MHz 4.3-10	23
78733160	4-Port Omni MIMO 698-4000MHz N	23
78715160	4-Port Ultra Thin Omni MIMO 698-6000MHz 4.3-10	24
78712323	1-Port Directional 698-4000 (SISO) 4.3-10	25
78711323	1-Port Directional 698-4000 (SISO) 4.3-10	25
78712311	2-Port Directional 698-2700 (MIMO) 4.3-10	26
78712330	2-Port Directional 698-4000 (MIMO) 4.3-10	27
78713130	4-port directional MIMO 698-4000MHz 4.3-10	28
78733130	4-port directional MIMO 698-4000MHz N	28
7012001	RF Absorbing base 260x30	29
7012002	RF Absorbing base 360x30	29

# 7871x019v01

Indoor  
Omnidirectional Antenna  
V-Pol 1-port 2/5dBi  
698-4000

**Omni Indoor**  
**698-4000 2/5dBi (Dome)**

Type	78712019v01		78711019v01	
	Frequency (MHz)	698-805	806-960	1425-2700
Gain (dBi)	2.0	2.0	5.0	5.5
VSWR	≤ 2.0	≤ 1.8	≤ 1.5	≤ 1.5
Polarization	Vertical			
PIM3 (dBc, @2x43dBm)	≤ -153			
Horizontal Beamwidth (°)	360			
Vertical Beamwidth (°)	85	80	54	28
Input Impedance (ohm)	50			
Max. Input Power (W)	50			
Lightning Protection	DC Grounded			
Connector	1 x 4.3-10 Female		1 x N Female	
Dimension (mm)	Ø186 x 86			
Weight (kgs)	Approx. 0.25			
Reflector Material	Aluminum			
Radome Material	ABS (UV Stabilized)			
Operating Temperature (°C)	-40 to +65			



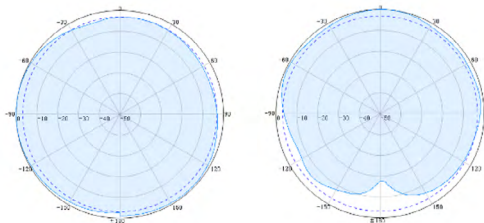
# 7871x020

Indoor  
Omnidirectional Antenna  
H/V-Pol 2-port 3/5dBi  
698-2700

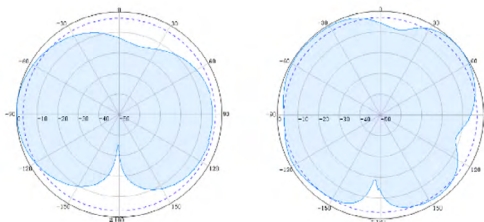
**Omni Indoor**  
**698-2700 3/5dBi**

Type	78712020	78711020
Frequency (MHz)	698-960	1710-2700
Gain (dBi)	3.0	4.5
VSWR	≤ 1.8	≤ 1.7
Polarization	H-V	
Isolation (dB)	≥ 19	≥ 23
PIM3 (dBc, @2x43dBm)	≤ -150	
Horizontal Beamwidth (°)	360	
Vertical Beamwidth (°)	90	46
Input Impedance (ohm)	50	
Max. Input Power (W)	50	
Lightning Protection	DC Grounded	
Connector	2 x 4.3-10 Female	2 x N Female
Dimension (mm)	Ø215 x 47	
Weight (kgs)	Approx. 0.45	
Reflector Material	Copper and PCB	
Radome Material	ABS (UV Stabilized)	
Operating Temperature (°C)	-40 to +65	

H Plan



V Plan



750MHz

2170MHz

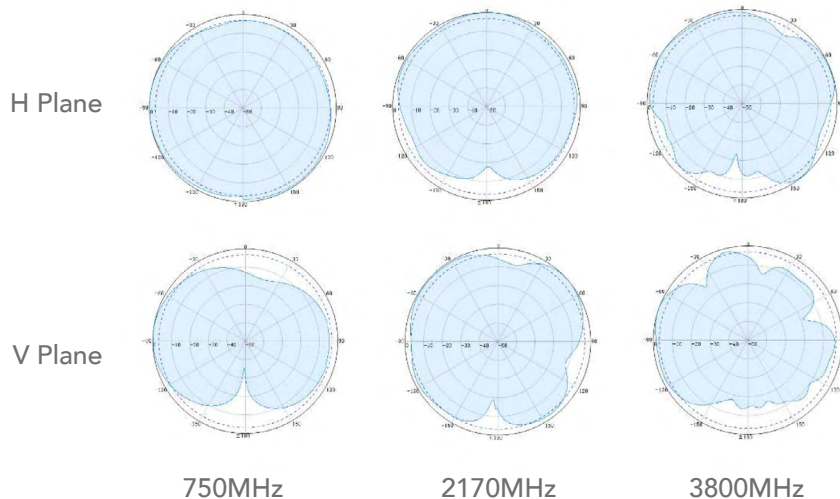


# 7871x030

Indoor  
Omnidirectional Antenna  
H/V-Pol 2-port 3/5dBi  
698-4000

## Omni Indoor 698-4000 3/5dBi

Type	78712030		78711030	
	Frequency (MHz)	698-805	806-960	1425-2700
Gain (dBi)	2.5	3.5	4.5	5.0
VSWR	≤ 2.0	≤ 1.8	≤ 1.8	≤ 1.8
Polarization	H-V			
Isolation (dB)	≥ 19		≥ 23	
PIM3 (dBc, @2x43dBm)	≤ -153			
Horizontal Beamwidth (°)	360			
Vertical Beamwidth (°)	95	90	46	38
Input Impedance (ohm)	50			
Max. Input Power (W)	50			
Lightning Protection	DC Grounded			
Connector	2 x 4.3-10 Female		2 x N Female	
Dimension (mm)	Ø215 x 47			
Weight (kgs)	Approx. 0.45			
Reflector Material	Aluminum			
Radome Material	ABS (UV Stabilized)			
Operating Temperature (°C)	-40 to +65			

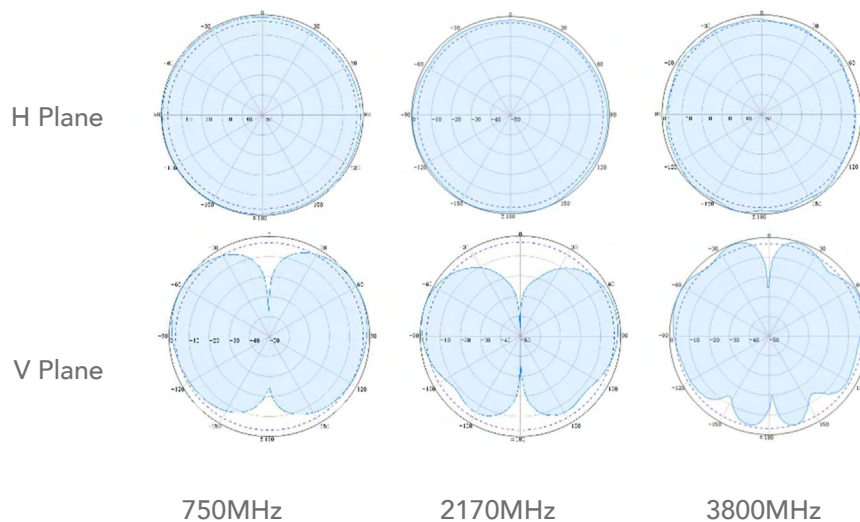


# 78712031

Indoor  
Omnidirectional Antenna  
V-Pol 1-port 2/4dBi  
698-4000

**Omni Indoor**  
**698-4000 2/4dBi**

Type	78712031			
Frequency (MHz)	698-805	806-960	1425-2700	3300-4000
Gain (dBi)	1.5	2.0	3.0	4.0
VSWR	≤ 2.0	≤ 2.0	≤ 1.5	≤ 1.5
Polarization	Vertical			
PIM3 (dBc, @2x43dBm)	≤ -153			
Horizontal Beamwidth (°)	360			
Vertical Beamwidth (°)	95	80	38	32
Input Impedance (ohm)	50			
Max. Input Power (W)	50			
Lightning Protection	DC Grounded			
Connector	4.3-10 Female			
Dimension (mm)	Ø204 x 125			
Weight (kgs)	Approx. 0.40			
Reflector Material	Aluminum			
Radome Material	ABS (UV Stabilized)			
Operating Temperature (°C)	-40 to +65			



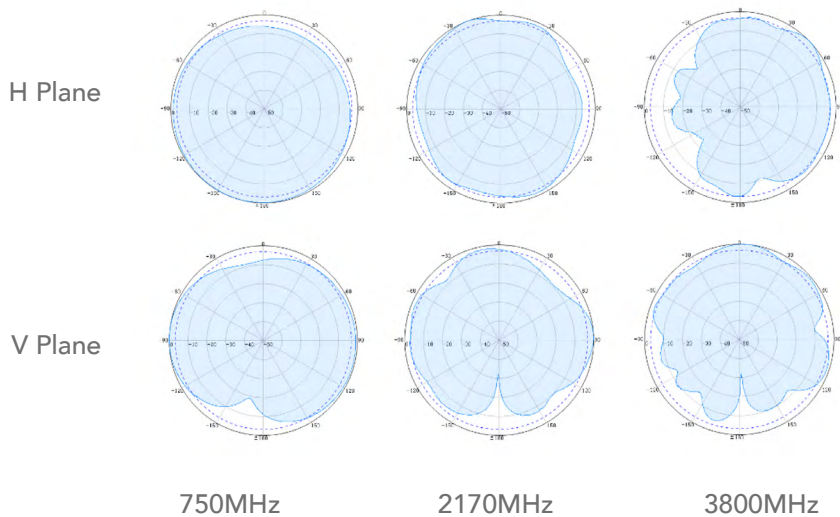
**78712033**

Indoor  
Omnidirectional Antenna  
H-Pol 1-port 3/5dBi  
698-4000

**Omni Indoor  
698-4000 3/5dBi (Rectangular Card)**

Type	78712033				
Frequency (MHz)	698-960	1425-1690	1690-2170	2170-2700	3300-4000
Gain (dBi)	3.0	3.5	4.0	5.0	4.0
VSWR	≤ 2.0	≤ 2.0	≤ 1.8	≤ 1.8	≤ 1.8
Polarization	Horizontal				
PIM3 (dBc, @2x43dBm)	≤ -153				
Horizontal Beamwidth (°)	360				
Vertical Beamwidth (°)	118	85	75	63	70
Input Impedance (ohm)	50				
Max. Input Power (W)	50				
Lightning Protection	DC Grounded				
Connector	1 x 4.3-10 Female				
Dimension (mm)	180 x 110 x 7				
Weight (kgs)	Approx. 0.2				
Reflector Material	RF PCB				
Radome Material	ABS (UV Stabilized)				
Operating Temperature (°C)	-40 to +65				

A)4WNS1115907YR/4WO51115907YR



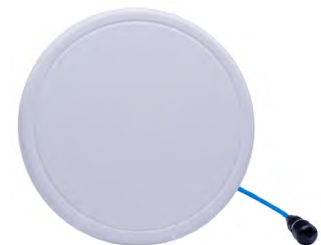
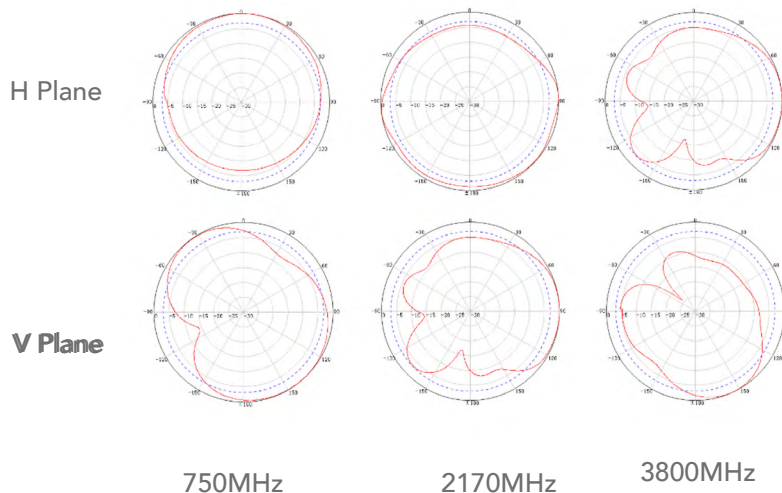


# 78712035

Indoor  
Omnidirectional Antenna  
H-Pol 1-port 3/5dBi  
698-4000

## Omni Indoor 698-4000 3/5dBi (Flat)

Type	78712035				
Frequency (MHz)	698-960	1425-1690	1690-2170	2170-2700	3300-4000
Gain (dBi)	2.5	3.5	4.0	5.0	4.0
VSWR	≤ 2.0	≤ 2.0	≤ 1.8	≤ 1.8	≤ 1.8
Polarization	Horizontal				
PIM3 (dBc, @2x43dBm)	≤ -153				
Horizontal Beamwidth (°)	360				
Vertical Beamwidth (°)	116	90	78	70	65
Input Impedance (ohm)	50				
Max. Input Power (W)	50				
Lightning Protection	DC Grounded				
Connector	1 x 4.3-10 female				
Dimension (mm)	Ø190 x 7.3				
Weight (kgs)	Approx. 0.2				
Reflector Material	RF PCB				
Radome Material	ABS (UV Stabilized)				
Operating Temperature (°C)	-40 to +65				

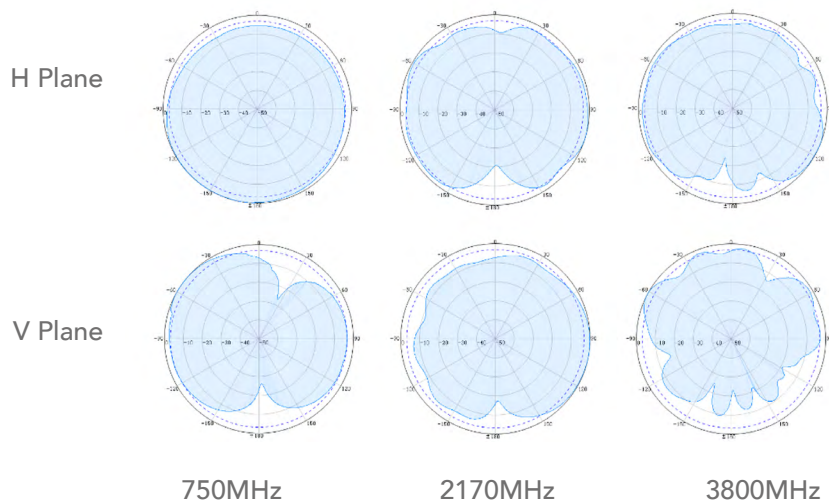


# 78712032

Indoor  
Omnidirectional Antenna  
H/H-Pol 2-port 3/6dBi  
617-4000

## Omni Indoor 617-4000 3/6dBi (Rectangular Card)

Type	78712032			
Frequency (MHz)	617-960	1425-2170	2300-2700	3300-4000
Gain (dBi)	3.0	4.0	6.0	5.5
VSWR	≤ 2.0	≤ 2.0	≤ 1.8	≤ 1.8
Polarization	H-H			
Isolation (dB)	20	23	23	23
PIM3 (dBc, @2x43dBm)	≤ -150			
Horizontal Beamwidth (°)	360			
Vertical Beamwidth (°)	113	78	65	102
Input Impedance (ohm)	50			
Max. Input Power (W)	50			
Lightning Protection	DC Grounded			
Connector	2 x 4.3-10 Female			
Dimension (mm)	250 X 150 X 12			
Weight (kgs)	Approx. 0.4			
Reflector Material	RF PCB			
Radome Material	ABS (UV Stabilized)			
Operating Temperature (°C)	-40 to +65			

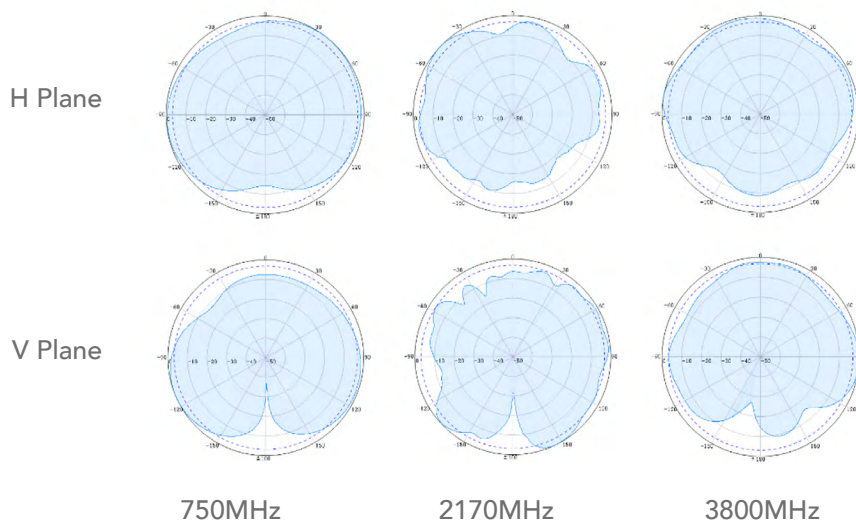


# 78712034

Indoor  
Omnidirectional Antenna  
H/H-Pol 2-port 3/6dBi  
698-4000

## Omni Indoor 698-4000 3/6dBi (Flat)

Type	78712034			
Frequency (MHz)	698-960	1425-2170	2300-2700	3300-4000
Gain (dBi)	3.0	4.0	6.0	5.5
VSWR	≤ 2.0	≤ 2.0	≤ 1.8	≤ 1.8
Polarization	H-H			
Isolation (dB)	20	23	23	23
PIM3 (dBc, @2x43dBm)	≤ -150			
Horizontal Beamwidth (°)	360			
Vertical Beamwidth (°)	110	68	29	30
Input Impedance (ohm)	50			
Max. Input Power (W)	50			
Lightning Protection	DC Grounded			
Connector	2 x 4.3-10 Female			
Dimension (mm)	Ø280 x 19			
Weight (kgs)	Approx. 0.55			
Reflector Material	RF PCB			
Radome Material	ABS (UV Stabilized)			
Operating Temperature (°C)	-40 to +65			

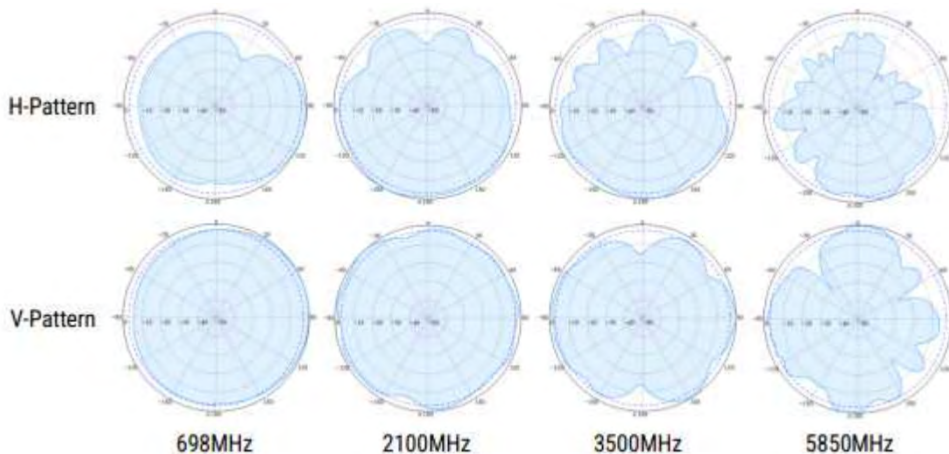


# 78712036

Indoor  
Omni Antenna Ultra-Thin  
H/H-Pol 2-port 4/6dBi  
698-6000

## Omni Indoor 698-6000 4/6dBi (Ultra-Thin)

Type	78712036			
Frequency (MHz)	698-960	1425-2170	3300-4000	4000-6000
Gain (dBi)	4.0	5.5	6.0	7.5
VSWR	≤ 1.8	≤ 1.7	≤ 1.7	≤ 1.7
Polarization	H-H			
Isolation (dB)	≥15	≥20	≥20	≥28
PIM3 (dBc, @2x43dBm)	≤ -153			
Horizontal Beamwidth (°)	360			
Vertical Beamwidth (°)	100-120	30-68	20-48	19-35
Input Impedance (ohm)	50			
Max. Input Power (W)	100			
Lightning Protection	DC Grounded			
Connector	2 x 4.3-10 Female			
Dimension (mm)	Ø285 x 8			
Weight (kgs)	Approx. 0.5			
Radome Material	ABS (UV Stabilized)			
Operating Temperature (°C)	-40 to +65			



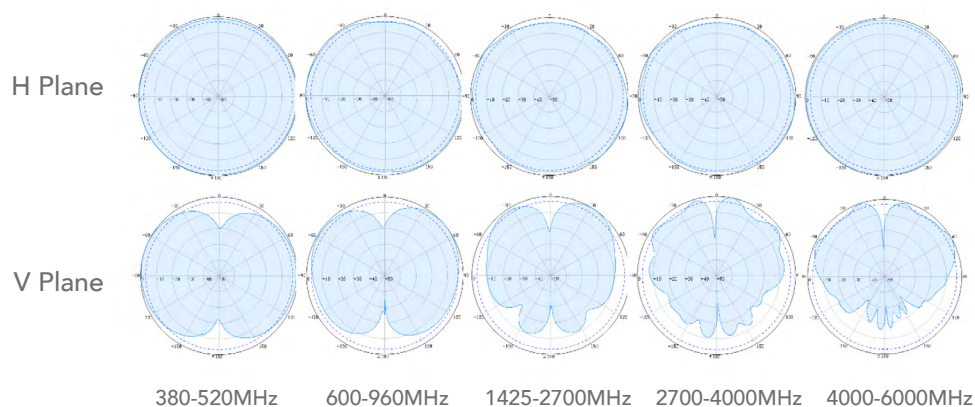
# 78712041

## Omni Indoor 380-6000 2/3/6dBi (Dome)

Indoor  
Omnidirectional Antenna (Dome)  
V-Pol 1-port 2/3/6dBi  
380-6000

Type	78712041				
Frequency (MHz)	380-520	600-960	1425-2700	2700-4000	4000-6000
Gain (dBi)	1.5	2.5	4.5	5.0	5.5
VSWR	≤ 2.5	≤ 2.0	≤ 2.0	≤ 2.0	≤ 2.0
Polarization	Vertical				
PIM3 (dBc, @2x43dBm)	≤ -153				
Horizontal Beamwidth (°)	360				
Vertical Beamwidth (°)	100	90	45	22	35
Input Impedance (ohm)	50				
Max. Input Power (W)	50				
Lightning Protection	DC Grounded				
Connector	1 x 4.3-10 Female				
Dimension (mm)	Ø285 x 135				
Weight (kgs)	Approx. 0.85				
Reflector Material	Aluminum				
Radome Material	ABS (UV Stabilized)				
Operating Temperature (°C)	-40 to +65				

(A)3WQMN41117194YR/3WQMN41117194YR  
(A)4WQMN41117194YR/4WQMN41117194YR



## 78712043 & 78712045

Indoor/Outdoor  
Omni Antenna (Mini)  
V-Pol 1-port 3/4dBi  
698-4000

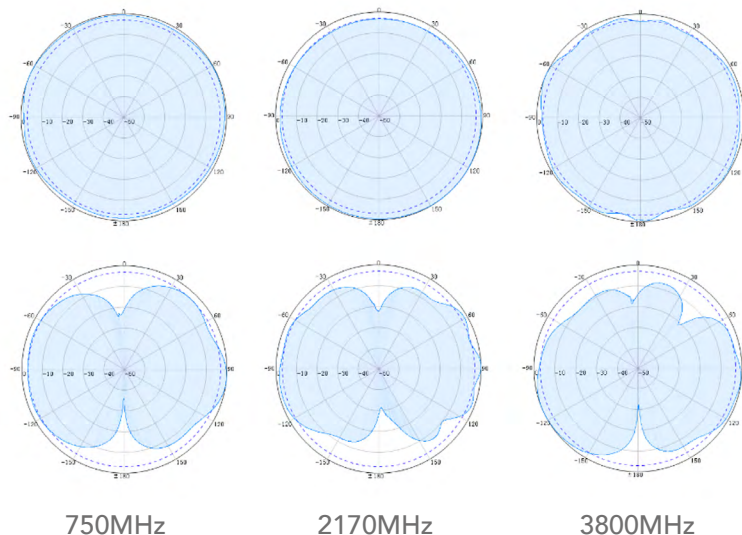
**V-Pol Omni**  
**698-4000 3/4dBi**

Type	Cubic Column	78712043		
	Cylindrical Column	78712045		
Frequency Range (MHz)	698-960	1425-2700	3300-4000	
Gain (dBi)	3	4	4.5	
VSWR	≤ 1.8			
3rd Order PIM (dBc)	≤ -150 @ 2x43dBm			
Polarization	Vertical			
Horizontal Beamwidth (°)	360			
Vertical Beamwidth (°)	80	52	38	
Input Impedance (ohm)	50			
Max. Input Power (W)	100			
Lightning Protection	DC Grounded			
Connector Type	1 x 4.3-10 Female			
Dimension (mm)	66 x 66 x 190	Ø63 x 190		
Weight (kgs)	Cubic Column: 0.35	Cylindrical Column: 1.0		
Radome Material	UV-ABS			
Radiator Material	Aluminum			
Operating Temperature (°C)	-40 to +65			
Mounting	Mounting Clamp for Pole Ø38-Ø52 included			

**78712043**  
Cubic Column



**78712045**  
Cylindrical Column



750MHz

2170MHz

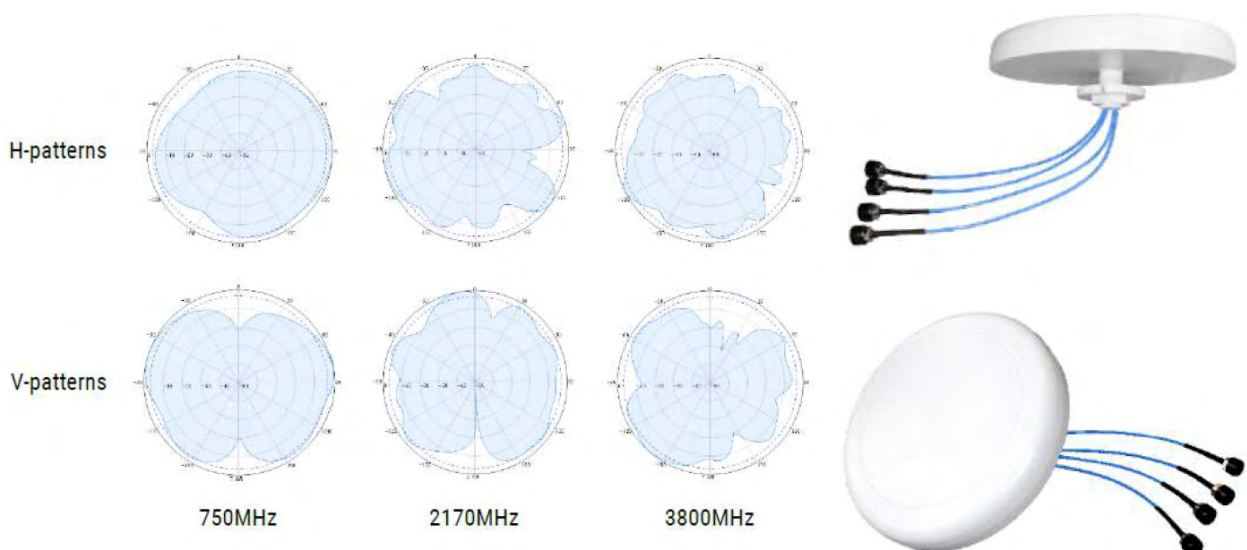
3800MHz

# 787x3160

Indoor  
Omni Antenna  
HH-Pol 4-port 4/5dBi  
698-4000

## Omni Indoor 698-4000 4/5dBi

Type	78713160		78733160	
Frequency (MHz)	698-960		1425-2700	3300-4000
Gain (dBi)	3.5		4.0	4.5
VSWR	≤ 2.0		≤ 2.0	≤ 2.0
Polarization	H-H			
PIM3 (dBc, @2x43dBm)	≤ -153			
Isolation (dB)	≥ 15	≥ 20	≥ 22	
Horizontal Beamwidth (°)	360			
Vertical Beamwidth (°)	90	46	38	
Input Impedance (ohm)	50			
Max. Input Power (W)	50			
Lightning Protection	All metal parts (outer conductors) are DC grounded. Inner conductor is not DC grounded			
Connector	4 x 4.3-10 Female		4 x N Female	
Dimension (mm)	Ø320 x 50			
Weight (kgs)	Approx. 1.0			
Reflector material	Aluminium			
Radome Material	ABS (UV Stabilized)			
Operating Temperature (°C)	-40 to +65			

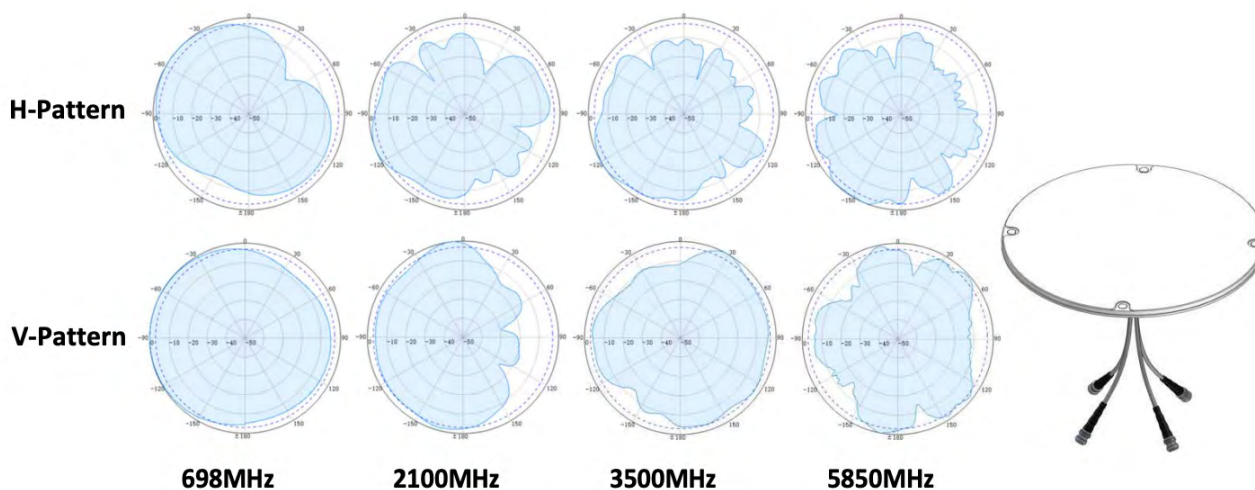


# 78715160

Indoor  
Omni Antenna (Ultra-Thin Plate)  
H-Pol 4-port 4/8dBi  
698-6000

## Omni Indoor 698-6000 4/8dBi (Ultra-Thin)

Type	78715160			
Frequency (MHz)	698-960	1425-2700	3300-4000	4000-6000
Gain (dBi)	4.0	5.5	6.0	7.5
VSWR	≤ 1.8	≤ 1.7	≤ 1.7	≤ 1.7
Polarization	Horizontal			
PIM3 (dBc, @2x43dBm)	≤ -153			
Isolation (dB)	≥ 15	≥ 20	≥ 28	≥ 28
Horizontal Beamwidth (°)	360			
Vertical Beamwidth (°)	100-120	30-68	20-48	19-35
Input Impedance (ohm)	50			
Max. Input Power (W)	100			
Lightning Protection	DC Grounded			
Connector	4 x 4.3-10 Female			
Dimension (mm)	Ø355 x 14			
Weight (kgs)	Approx. 1.6			
Radome Material	ABS (UV Stabilized)			
Operating Temperature (°C)	-40 to +65			



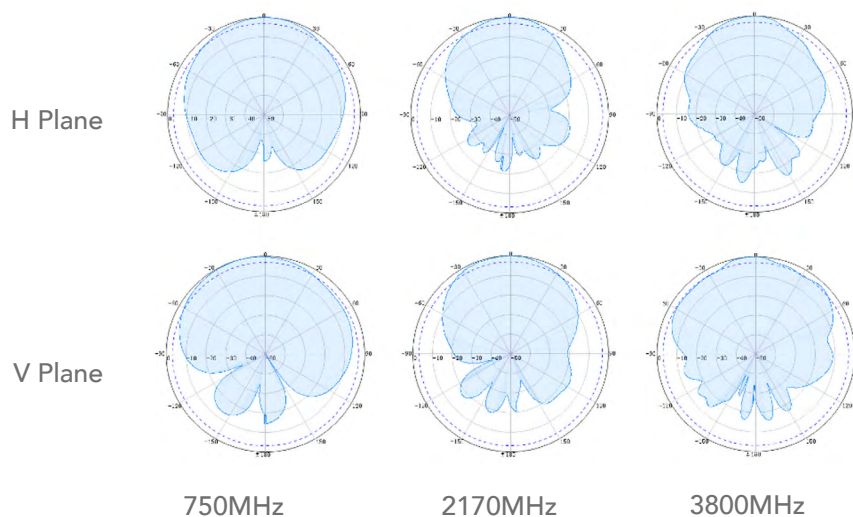


# 7871x323

Indoor  
Directional Panel Antenna  
VPol 1-port 6/8dBi  
698-4000MHz

**Panel Indoor**  
**698-4000MHz 6/8dBi**

Type	78712323		78711323	
	Frequency (MHz)	698-806	806-960	1425-2700
Gain (dBi)	5.5	6.5	8.0	7.0
VSWR	≤ 2.0	≤ 2.0	≤ 1.8	≤ 1.8
Polarization	Vertical			
PIM3 (dBc, @2x43dBm)	≤ -153			
Front-to-Back Ratio (dB)	≤ 9	≤ 10	≤ 15	≤ 11
Horizontal Beamwidth (°)	100	85	65	50
Vertical Beamwidth (°)	90	82	60	45
Input Impedance (ohm)	50			
Max. Input Power (W)	50			
Lightning Protection	All metal parts of the antenna and mounting kit are DC grounded. Inner conductor is not DC grounded			
Connector	4.3-10 Female		N Female	
Dimension (mm)	180 x 158 x 60			
Weight (kgs)	Approx. 0.40			
Reflector Material	Aluminum			
Radome Material	ABS (UV Stabilized with RAL 9003)			
Operating Temperature (°C)	-40 to +65			

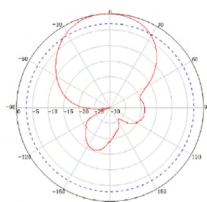
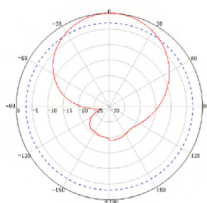


# 7871x311

Indoor  
Panel Directional Antenna  
H/V-Pol 2-port 6/9dBi  
698-2700

**Panel Indoor**  
**698-2700 7/9dBi**

Type	78712311		78711311	
	Frequency (MHz)	698-805	806-960	1690-2170
Gain (dBi)	6.5	7.0	8.5	9.0
VSWR	≤ 1.8		≤ 1.7	
Polarization	±45°			
PIM3 (dBc, @2x43dBm)	≤ -150			
Isolation (dB)	≤ 20		≤ 23	
Horizontal Beamwidth (°)	78	73	65	60
Vertical Beamwidth (°)	70	62	58	55
Input Impedance (ohm)	50			
Max. Input Power (W)	50			
Lightning Protection	DC Grounded			
Connector	2 x 4.3-10 Female		2 x N Female	
Dimension (mm)	315 x 195 x 68			
Weight (kgs)	Approx. 0.7			
Reflector Material	Copper and PCB			
Radome Material	ABS (UV Stabilized)			
Operating Temperature (°C)	-40 to +65			

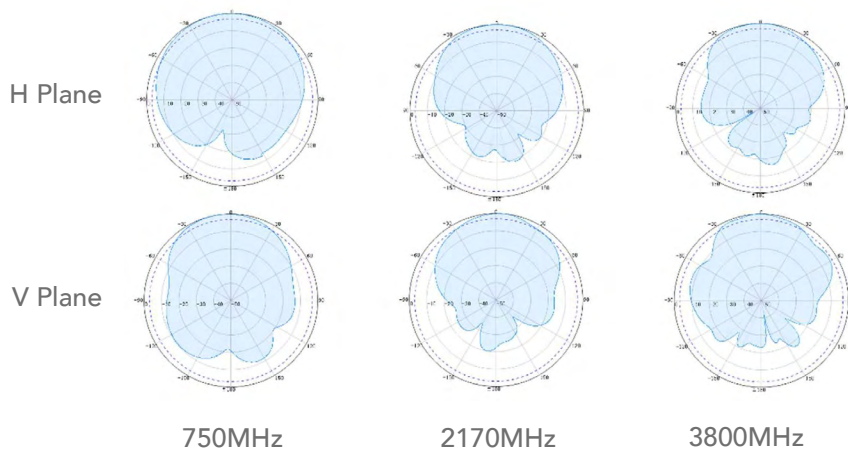


# 78712330

Indoor  
Panel Directional Antenna  
H/H-Pol 2-port 6/9dBi  
698-4000

**Panel Indoor**  
**698-4000 6/9dBi**

Type	78712330		
Frequency (MHz)	698-960	1425-2700	3300-4000
Gain (dBi)	5.5	8.5	7.0
VSWR	≤ 2.0	≤ 1.8	≤ 2.0
Polarization	H-V		
PIM3 (dBc, @2x43dBm)	≤ -153		
Isolation (dB)	≥ 12	≥ 20	≥ 24
Front-to-Back Ratio (dB)	≥ 7	≥ 13	≥ 10
Horizontal Beamwidth (°)	90	65	45
Vertical Beamwidth (°)	78	60	38
Input Impedance (ohm)	50		
Max. Input Power (W)	50		
Lightning Protection	DC Grounded		
Connector	2 x 4.3-10 Female		
Dimension (mm)	315 x 195 x 68		
Weight (kgs)	Approx. 0.65		
Reflector Material	Aluminum and PCB		
Radome Material	ABS (UV Stabilized)		
Operating Temperature (°C)	-40 to +65		



# 787x3130

## Panel Indoor 698-4000 6/9dBi

Indoor  
Panel Directional Antenna  
VHPol 4-port 6/9dBi  
698-4000

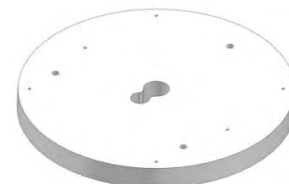
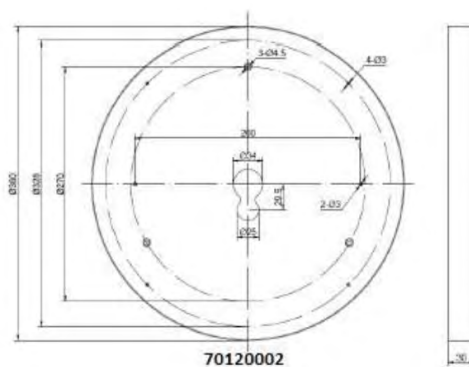
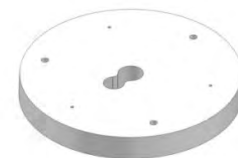
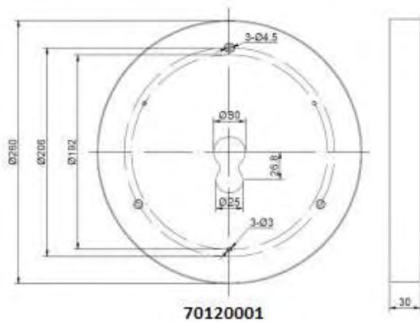
Type	78713130		78733130
Frequency (MHz)	698-960	1425-2700	3300-4000
Gain (dBi)	5.5	8.5	7.9
VSWR	≤ 2.0	≤ 2.0	≤ 2.0
Polarization	V-H		
PIM3 (dBc, @2x43dBm)	≤ -153		
Isolation (dB)	≥ 12	≥ 20	≥ 24
Front-to-Back Ratio (dB)	≥ 7	≥ 13	≥ 10
Horizontal Beamwidth (°)	130-85	95-58	65-33
Vertical Beamwidth (°)	108-78	83-45	90-25
Input Impedance (ohm)	50		
Max. Input Power (W)	50		
Lightning Protection	DC Grounded		
Connector	4 x 4.3-10 Female	4 x N Female	
Dimension (mm)	385 x 315 x 68		
Weight (kgs)	Approx. 1.5		
Reflector Material	Aluminum and PCB		
Radome Material	ABS (UV Stabilized)		
Operating Temperature (°C)	-40 to +65		
Mounting	Fixed wall mounting bracket included		
Optional accessory (*order separately)	Universal Mounting Bracket 70010008 Wall mount: ±25° horizontal swivel & +27°/-35° vertical tilt Pole mount: ±45° horizontal swivel; pole size Ø38-Ø52mm		



**70120001 / 70120002**

RF absorbing base for ESB omni ceiling antennas

Type	70120001	70120002
Mounting	30 x Ø260	30 x Ø360
Colour	ABS (UV Stabilized)	

**Application of ESB absorbing base**

In general, omni ceiling-mounted antennas are installed on non-metallic surface and avoid being installed near any metallic object or surface to avoid RF interferences which could badly affect the antenna performance. When such installation becomes not possible, ESB RF Absorbing Base is used to minimize the RF interferences and improve the performance to acceptable level. ESB does not guarantee the operation of this device and highly recommends installing antennas on non-metallic surfaces

# Low PIM splitters

---

ESB Low PIM splitters are designed to cover the most demanding networks starting from 380Mhz up to 6000Mhz. Round or squared tube are available as well as different connectors (4.3-10, 7/16 and N) for the most convenient scenario.

Part Number	Description	Page
78710131	2-way Splitter 340-3800 MHz 7/16	32
78710133	3-way Splitter 340-3800 MHz 7/16	32
78710134	4-way Splitter 340-3800 MHz 7/16	32
78761022v03	2-way Splitter 350-6000 MHz N	33
78761032v03	3-way Splitter 350-6000 MHz N	33
78761042v03	4-way Splitter 350-6000 MHz N	33
78762023	2-way Splitter 698-4000 MHz 4.3-10	34
78762033	3-way Splitter 698-4000 MHz 4.3-10	34
78762043	4-way Splitter 698-4000 MHz 4.3-10	34
78762023v01	2-way Splitter 555-6000 MHz 4.3-10	35
78762033v01	3-way Splitter 555-6000 MHz 4.3-10	35
78762043v01	4-way Splitter 555-6000 MHz 4.3-10	35
78710141	2-way Splitter 380-4000 MHz 4.3-10	36
78710143	3-way Splitter 380-4000 MHz 4.3-10	36
78710144	4-way Splitter 380-4000 MHz 4.3-10	36
78761022v01	2-way Splitter 698-4000 MHz N	37
78761032	3-way Splitter 698-2700 MHz N	38
78761042	4-way Splitter 698-2700 MHz N	38

# 7871013x

340-3800Mhz Outdoor Power Splitter  
 2-/3-/4- Way Power Splitter  
 Low PIM -160dBc  
 500W DIN 7/16

## Power Splitter 500W 340-3800 (Square Tube)

Type	78710131	78710133	78710134
Frequency (MHz)	340-3800		
Splitting Output	2-way	3-way	4-way
Distribution Loss (dB)	3.0	4.8	6.0
Insertion Loss (dB)	< 0.3	< 0.4	< 0.5
Return Loss (dB)	≥ 19		
PIM3 (dBc, @2x43dBm)	≤ -160		
Input Impedance (ohm)	50		
Max. Input Power (W)	500		
Connector	DIN 7/16 Female		
Weight (kgs)*	0.6	0.7	0.8
Dimension (mm)**	249 x 25 x 25	275 x 25 x 25	295 x 25 x 25
Ingress Protection Class	IP65 (for outdoor and indoor)		
Operating RH (%)	≤ 95		
Operating Temperature (°C)	-25 to +65		
Environmental data	Electromagnetic Compatibility 2014/30/EU RoHS compliance directive 2011/65/EU ETSI EN 300 019-1-4		
Mounting	Built-in Bracket for wall mount		
Colour	Light Grey		





# 787610X2v03

Power Splitter

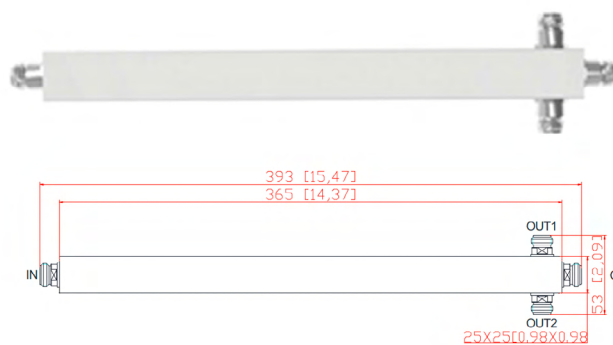
2-/3-/4-way

N 300W PIM -160dBc

350-6000MHz

## Power Splitter 300W 350-6000 (Square Tube)

Type	78761022v03	78761032v03	78761042v03
Frequency (MHz)	350-6000		
Splitting Output	2-way	3-way	4-way
VSWR	≤1.25	≤1.25	≤1.25
Split Loss (dB)	≤3.5	≤5.6	≤7.1
PIM3 (dBc, @2x43dBm)	≤ -160		
Input Impedance (ohm)	50		
Max. Input Power (W)	300		
Peak Power (W)	1200		
Connector	N Female		
Weight (kgs)	0.5	0.6	0.65
Dimension (mm)	318 x 25 x 25	365 x 25 x 25	399 x 25 x 25
Dimension (mm)**	420x80x40	420x80x40	460x80x60
Ingress Protection Class	IP65 (for outdoor and indoor)		
Operating RH (%)	≤ 95		
Operating Temperature (°C)	-25 to +65		
Mounting	Built-in Bracket for wall mount		
Colour	Light Grey		



# 787620X3

Power Splitter  
 2- / 3- / 4-way 4.3-10 500W  
 PIM -160dBc  
 698-4000

## Power Splitter 500W 698-4000 (Round Tube)

Type	78762023	78762033	78762043
Frequency (MHz)	698-4000		
Splitting Output	2-way	3-way	4-way
Distribution Loss (dB)	3.0	4.8	6.0
Insertion Loss (dB)	< 0.4	< 0.5	< 0.6
Return Loss (dB)	≥ 19		
PIM3 (dBc, @2x43dBm)	≤ -160		
Input Impedance (ohm)	50		
Max. Input Power (W)	500		
Connector	4.3-10 Female (Screwed-in)		
Weight (kgs)	0.22	0.3	0.35
Dimension (mm)	199.1 x 25 x 25	233.6 x 25 x 25	236.1 x 25 x 25
Ingress Protection Class	IP65 (for outdoor and indoor)		
Operating RH (%)	≤ 95		
Operating Temperature (°C)	-25 to +65		
Mounting	Built-in Bracket for wall mount		
Colour	Light Grey		



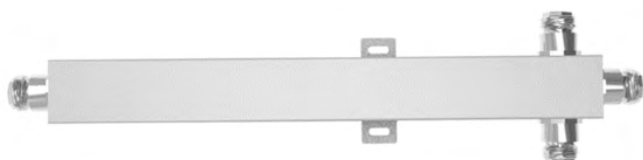
78762043

\* including mounting bracket and connectors  
 \*\* excluding mounting bracket and connectors

**787620X3v01****Power Splitter  
500W 555-6000 (Square Tube)**

Power Splitter  
2- / 3- / 4-way 4.3-10F 500W  
PIM -160dBc  
555-6000Mhz

Type	78762023v01	78762033v01	78762043v01
Frequency (MHz)	555-6000		
Splitting Output	2-way	3-way	4-way
Distribution Loss (dB)	3.0	5.0	6.0
Insertion Loss (dB)	< 0.4	< 0.5	< 0.6
Return Loss (dB)	≥ 19		
VWSR	≤ 1.3		
PIM3 (dBc, @2x43dBm)	≤ -163		
Input Impedance (ohm)	50		
Max. Input Power (W)	500		
Peak Power (W)	1500		
Connector	4.3-10 Female (Screwed-in)		
Weight (kgs)	0.35	0.4	0.45
Dimension (mm)	218 x 25 x 25	269.2 x 25 x 25	269.20 x 25 x 25
Ingress Protection Class	IP65 (for outdoor and indoor)		
Operating RH (%)	≤ 95		
Operating Temperature (°C)	-40 to +80		
Mounting	Built-in Bracket for wall mount		
Colour	Light Grey		

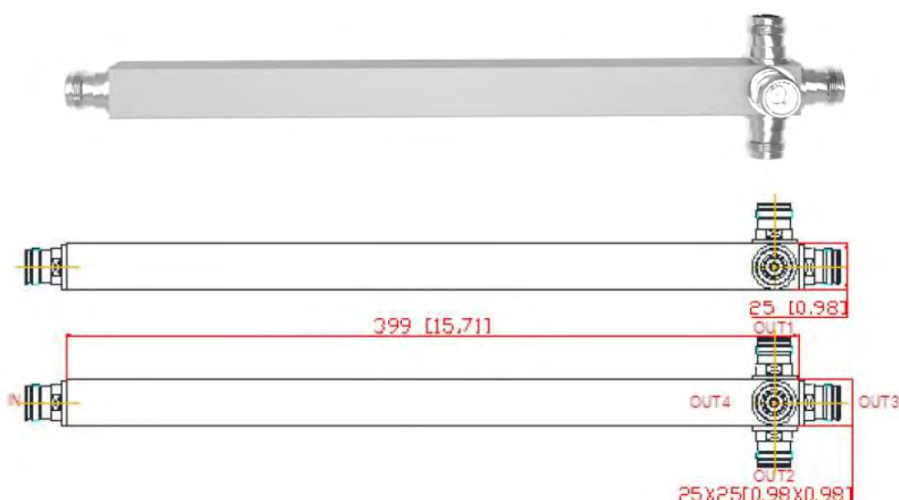


# 7871014x

380-4000Mhz Outdoor Power Splitter  
 2-/3-/4- Way Power Splitter  
 Low PIM -160dBc  
 500W 4.3-10 F

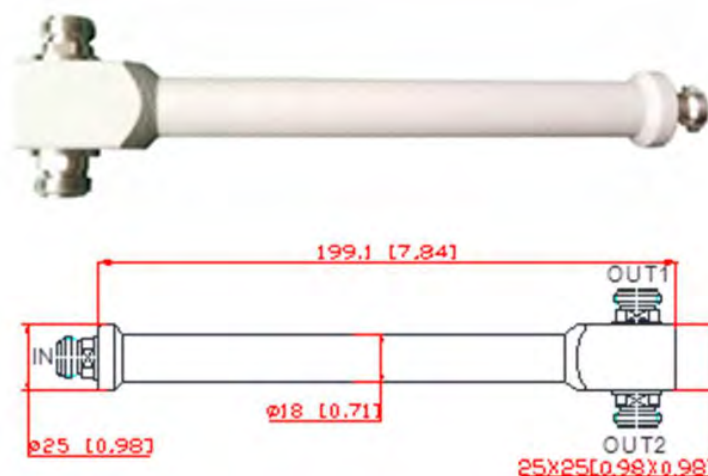
## Power Splitter 500W 380-4000 (Square Tube)

Type	78710141	78710143	78710144
Frequency (MHz)	380-4000		
Splitting Output	2-way	3-way	4-way
Split Loss (dB)	≤3.5	≤5.6	≤6.8
PIM3 (dBc, @2x43dBm)	≤ -160		
Input Impedance (ohm)	50		
Handling Power (W)	500		
Peak Power (W)	1500		
Connector	4.3-10 Female		
Weight (kgs)	0.5	0.64	0.75
Dimension (mm)	318 x 25 x 25	365 x 25 x 25	399 x 25 x 25
Ingress Protection Class	IP65 (for outdoor and indoor)		
Operating RH (%)	≤ 95		
Operating Temperature (°C)	-25 to +65		
Environmental data	Electromagnetic Compatibility 2014/30/EU RoHS compliance directive 2011/65/EU ETSI EN 300 019-1-4		
Mounting	Built-in Bracket for wall mount		
Colour	Light Grey		



**78761022v01****Power Splitter  
300W 698-4000 (Round Tube)**Power Splitter 2 way  
N 300W PIM -160dBc  
698-4000MHz

Type	78761022v01
Frequency (MHz)	698-4000
Splitting Output	2-way
Distribution Loss (dB)	3.0
Insertion Loss (dB)	< 0.4
Return Loss (dB)	≥ 19
PIM3 (dBc, @2x43dBm)	≤ -160
Input Impedance (ohm)	50
Handling Power (W)	100
Peak Power (W)	1200
Connector	N Female (Screwed-in)
Weight (kgs)*	0.22
Dimension (mm)**	199.1 x 25 x 25
Ingress Protection Class	IP65 (for outdoor and indoor)
Operating RH (%)	≤ 95
Operating Temperature (°C)	-25 to +65
Mounting	Built-in Bracket for wall mount
Colour	Light Grey



**Power Splitter**  
**300W 698-2700(Round Tube)**

## 787610X2

Power Splitter  
 3- / 4-way N 300W  
 PIM -155dB  
 698-2700

Type	78761032	78761042
Frequency (MHz)	698-2700	
Splitting Output	3-way	4-way
Distribution Loss (dB)	4.8	6.0
Insertion Loss (dB)	< 0.4	< 0.5
Return Loss (dB)	≥ 19	
PIM3 (dBc, @2x43dBm)	≤ -155	
Input Impedance (ohm)	50	
Max. Input Power (W)	300	
Max. Peak Power (W)	800	
Connector	N Female (Screwed-in)	
Weight (kgs)*	0.23	0.28
Dimension (mm)**	258 x 25 x 25	288.2 x 25 x 25
Ingress Protection Class	IP65 (for outdoor and indoor)	
Operating RH (%)	≤ 95	
Operating Temperature (°C)	-25 to +65	
Mounting	Built-in Bracket for wall mount	
Colour	Light Grey	



\* including mounting bracket and connectors  
 \*\* excluding mounting bracket and connectors



# Low PIM Directional Couplers

---

ESB Low PIM directional couplers allow to separate an incoming signal in two identical or two different shares with the output signals being very effectively de-coupled from each other. These directional couplers are designed to cover the most demanding networks starting from 380Mhz up to 6000Mhz. Different connectors are available (4.3-10 and N) for the most convenient scenario.



Part Number	Description	Page
78761106	6 dB Coupler 698-2700 MHz N	42
78761108	8 dB Coupler 698-2700 Mhz N	42
78761110	10 dB Coupler 698-2700 MHz N	42
78761115	15 dB Coupler 698-2700 MHz N	42
78761105v03	5 dB Coupler 350-6000 MHz N	43
78761106v03	6 dB Coupler 350-6000 MHz N	43
78761108v03	8 dB Coupler 350-6000 Mhz N	43
78761110v03	10 dB Coupler 350-6000 MHz N	43
78761115v03	15 dB Coupler 350-6000 MHz N	43
78761120v03	20 dB Coupler 350-6000 MHz N	43
78762105	5 dB Coupler 698-4000 4.3-10	44
78762106	6 dB Coupler 698-4000 4.3-10	44
78762108	8 dB Coupler 698-4000 4.3-10	44
78762110	10 dB Coupler 698-4000 4.3-10	44
78762115	15 dB Coupler 698-4000 4.3-10	44
78762120	20 dB Coupler 698-4000 4.3-10	44
78762130	30 dB Coupler 698-4000 4.3-10	44
78762105v01	5 dB Coupler 555-6000 4.3-10	45
78762106v01	6 dB Coupler 555-6000 4.3-10	45
78762108v01	8 dB Coupler 555-6000 4.3-10	45
78762110v01	10 dB Coupler 555-6000 4.3-10	45
78762115v01	15 dB Coupler 555-6000 4.3-10	45
78762120v01	20 dB Coupler 555-6000 4.3-10	45
78762130v01	30 dB Coupler 555-6000 4.3-10	45

# 787611XX

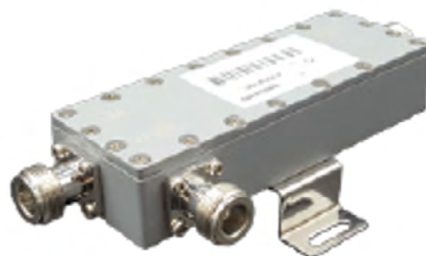
## Directional Coupler 698-2700

Directional Coupler N  
PIM -155dBc  
698-2700

Type	78761106	78761108	78761110	78761115
Coupling Value (dB)	6	8	10	15
Coupling Bias (dB)	±0.8	±0.8	±1.0	±1.0
Insertion Loss (dB)	≤1.76	≤1.17	≤0.96	≤0.44
Isolation (dB)	≥24	≥26	≥28	≥33

Electrical Specifications	
Frequency Range (MHz)	698-2700
Impedance (Ω)	50
Return Loss (dB)	> 19
IM3 (dBc, @2x43dBm)	≤ -155
Max. Power Rating (W)	300
Peak Power (W)	800

Mechanical and Environmental Specifications	
Dimension (mm)**	126 x 45 x 25
Weight (kgs)*	0.53
Colour	Light Grey
Mounting	Wall Mount with Bracket
Operating Temp (°C)	-25 to +65
Ingress Protection Class	IP65
Packing Dimension (mm)	180 x 100 x 55
SKU (unit per box)	40 pcs per inner carton



\* including mounting bracket and connectors  
\*\* excluding mounting bracket and connectors

# 787611XXv03

Directional Coupler NF  
PIM -160dBc  
350-6000MHz

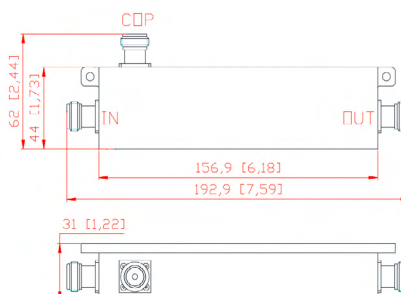
## Directional Coupler 350-6000Mhz

Type	78761105v03	78761106v03	78761108v03
Coupling Value (dB)	5	6	8
Coupling Bias (dB)	±2.0	±2.0	±2.0
Insertion Loss (dB)	≤3.0	≤1.8	≤1.5
Isolation (dB)350-4800	≥22	≥23	≥26
Isolation(dB)4800-6000	≥20	≥21	≥22
VSWR	≤1.3 (350-4800Mhz) ≤1.40 (4800-6000MHz)		

Type	78761110v03	78761115v03	78761120v03
Coupling Value (dB)	10	15	20
Coupling Bias (dB)	±2.0	±2.3	±2.3
Insertion Loss (dB)	≤1.1	≤0.8	≤0.22
Isolation (dB)350-4800	≥28	≥33	≥38
Isolation(dB)4800-6000	≥23	≥30	≥35
VSWR	≤1.3 (350-4800Mhz) ≤1.40 (4800-6000MHz)		

Electrical Specifications	
Frequency Range (MHz)	350-6000
Impedance (Ω)	50
IM3 (dBc, @2x43dBm)	≤ -160
Connector Type	N female
Max. Power Rating (W)	200
Peak Power (W)	1,200

Mechanical and Environmental Specifications	
Dimension (mm)**	156.90 x 44 x 31
Weight (kgs)*	0.6
Colour	Light Grey
Mounting	Wall Mount
Operating Temp (°C)	-35 to +85
Ingress Protection Class	IP65
Packing Dimension (mm)	180 x 100 x 55



\* including mounting bracket and connectors  
\*\* excluding mounting bracket and connectors

# 787621XX

## Directional Coupler 698-4000

Directional Coupler 4.3-10  
PIM -160dBc  
698-4000

Type	78762105	78762106	78762108	78762110
Coupling Value (dB)	5	6	8	10
Coupling Bias (dB)	±1.0	±1.0	±1.0	±1.5
Insertion Loss (dB)	≤2.3	≤1.8	≤1.3	≤0.8
Isolation (dB)	≥23	≥24	≥26	≥28

Type	78762115	78762120	78762130
Coupling Value (dB)	15	20	30
Coupling Bias (dB)	±1.5	±1.5	±1.5
Insertion Loss (dB)	≤0.4	≤0.4	≤0.2
Isolation (dB)	≥38	≥38	≥45

Electrical Specifications	
Frequency Range (MHz)	698-4000
Impedance (Ω)	50
Return Loss (dB)	> 21 (Freq ≤ 2700MHz); > 19 (Freq 2700-4000MHz)
Directivity (dB)	> 20 (Freq ≤ 2700MHz); > 18 (Freq 2700-4000MHz)
IM3 (dBc, @2x43dBm)	≤ -160
Connector Type	4.3-10
Max. Power Rating (W)	500
Peak Power (W)	1,500

Mechanical and Environmental Specifications	
Dimension (mm)**	137 x 47.3 x 26
Weight (kgs)*	0.45
Colour	Light Grey
Mounting	Wall Mount
Operating Temp (°C)	-35 to +85
Ingress Protection Class	IP65
Packing Dimension (mm)	250 x 95 x 45
SKU (unit per box)	30 pcs per inner carton



\* including mounting bracket and connectors  
\*\* excluding mounting bracket and connectors

# 787621XXv01

Directional Coupler 4.3-10  
PIM -160dBc  
555-6000

## Air Dielectric directional Coupler 555-6000MHz

Type	78762105v01	78762106v01	78762108v01	78762110v01
Coupling Value (dB)	5	6	8	10
Coupling Bias (dB)	±1.4	±1.4	±1.1	±1.6
Insertion Loss (dB)	≤2.2	≤1.8	≤1.1	≤0.8
Isolation (dB)	≥21	≥23	≥25	≥28

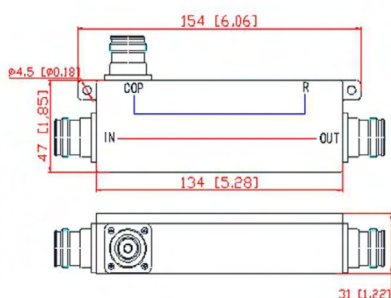
Type	78762115v01	78762120v01	78762130v01
Coupling Value (dB)	15	20	30
Coupling Bias (dB)	±1.6	±1.6	±1.6
Insertion Loss (dB)	≤0.22	≤0.2	≤0.2
Isolation (dB)	≥31	≥36	≥45

### Electrical Specifications

Frequency Range (MHz)	555-6000
Impedance (Ω)	50
IM3 (dBc, @2x43dBm)	≤ -161
Connector Type	4.3-10
Max. Power Rating (W)	500
Peak Power (W)	1,500

### Mechanical and Environmental Specifications

Dimension (mm)**	127 x 40 x 31
Packind dimension (mm)	190 x 85 x 45
Weight (kgs)*	0.6
Colour	Light Grey
Mounting	Wall Mount
Operating Temp (°C)	-35 to +85
Ingress Protection Class	IP65
Packing Dimension (mm)	430 x 400 x 105

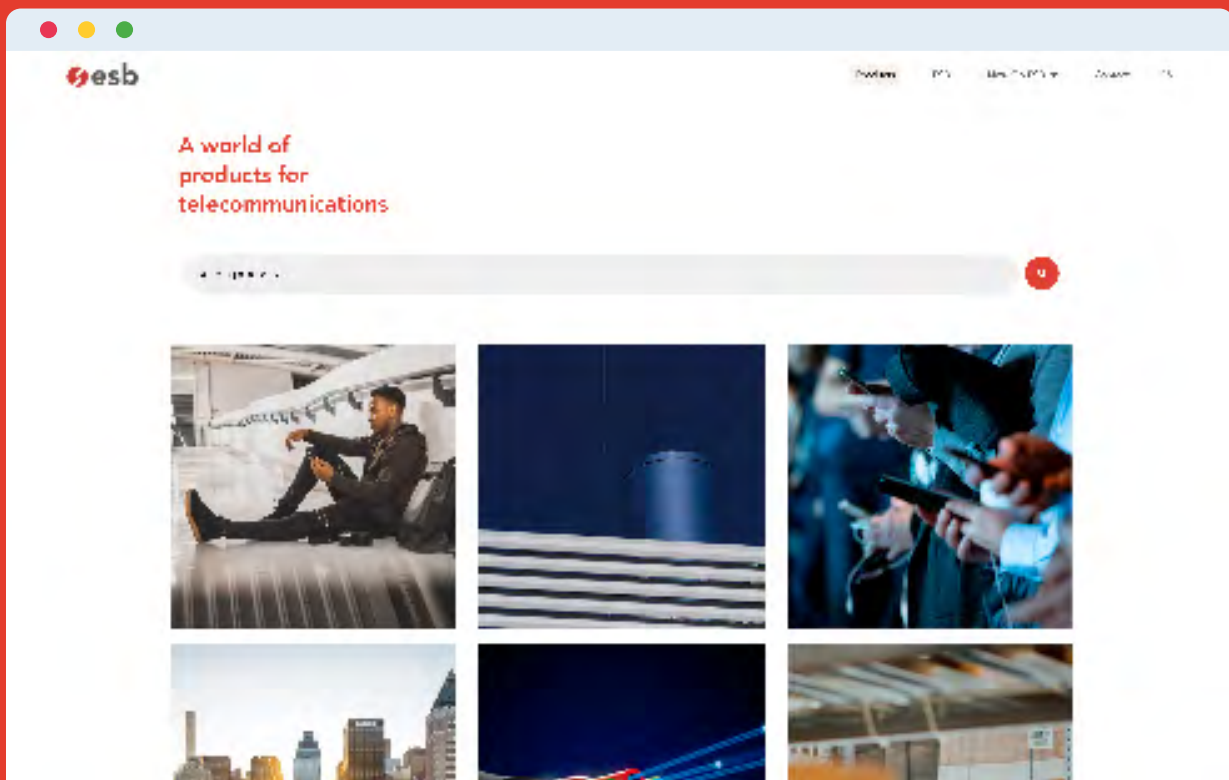


\* including mounting bracket and connectors  
\*\* excluding mounting bracket and connectors

# Stay tuned

---

Visit us on [esbsistemas.com](http://esbsistemas.com) and discover the latest releases, news and updates of our products





# RF Tappers

---

Tappers are designed to split a signal into unequal parts respectively to tap off a signal portion from a main signal.



# 7872013X

698-4200Mhz RF Tapper  
7/10/15dB  
Low PIM -160dBc  
300W 4.3-10 F

## RF Tapper 300W 698-4200 (Square Tube)

Type	78720136	78720137	78720138
Frequency (MHz)	698-4200		
Coupling (dB)	7±1.2	10±1.3	15±1.5
Inserion Loss	≤1.5	≤1.2	≤0.8
PIM3 (dBc, @2x43dBm)	≤ -160		
Input Impedance (ohm)	50		
Handling Power (W)	300		
Peak Power (W)	1500		
Connector	4.3-10 Female		
VSWR	≤1.35		
Weight (kgs)	0.3		
Dimension (mm) excluding connector	95 x 25 x 25		
Ingress Protection Class	IP65 (for outdoor and indoor)		
Operating RH (%)	≤ 95		
Operating Temperature (°C)	-55 to +65		
Environmental data	RoHS compliance directive 2011/65/EU		
Material data for housing	Aluminium + Powder coated		
Material data for connectors	Brass + CuSnZn3		
Mounting	Built-in Bracket for wall mount		
Colour	Light Grey		



# Standard attenuators

---

Attenuators are used mainly where a power reduction is needed to reach a certain level in a transmission line. Different input power starting from 5W up to 100W can be found in our portfolio.

Part Number	Description	MHz	IM3 (dBc)	Input Power (W)	Connector Type	Page
78710315	3 dB Attenuator	DC-4000	-120	5	4.3-10 F/M	52
78710615	6 dB Attenuator	DC-4000	-120	5	4.3-10 F/M	52
78710310	3 dB Attenuator	DC-4000	-120	10	4.3-10 F/M	53
78710610	6 dB Attenuator	DC-4000	-120	10	4.3-10 F/M	53
78711010	10 dB Attenuator	DC-4000	-120	10	4.3-10 F/M	53
78711510	15 dB Attenuator	DC-4000	-120	10	4.3-10 F/M	53
78712010	20 dB Attenuator	DC-4000	-120	10	4.3-10 F/M	53
78713010	30 dB Attenuator	DC-4000	-120	10	4.3-10 F/M	53
78714010	40 dB Attenuator	DC-4000	-120	10	4.3-10 F/M	53
78710385	3 dB Attenuator	DC-4000	-120	15	4.3-10 F/M	54
78710685	6 dB Attenuator	DC-4000	-120	15	4.3-10 F/M	54
78711085	10 dB Attenuator	DC-4000	-120	15	4.3-10 F/M	54
78711585	15 dB Attenuator	DC-4000	-120	15	4.3-10 F/M	54
78712085	20 dB Attenuator	DC-4000	-120	15	4.3-10 F/M	54
78713085	30 dB Attenuator	DC-4000	-120	15	4.3-10 F/M	54
78714085	40 dB Attenuator	DC-4000	-120	15	4.3-10 F/M	54
78710325	3 dB Attenuator	DC-4000	-120	25	4.3-10 F/M	55
78710625	6 dB Attenuator	DC-4000	-120	25	4.3-10 F/M	55
78711025	10 dB Attenuator	DC-4000	-120	25	4.3-10 F/M	55
78711525	15 dB Attenuator	DC-4000	-120	25	4.3-10 F/M	55
78712025	20 dB Attenuator	DC-4000	-120	25	4.3-10 F/M	55
78713025	30 dB Attenuator	DC-4000	-120	25	4.3-10 F/M	55
78714025	40 dB Attenuator	DC-4000	-120	25	4.3-10 F/M	55
78710345	3 dB Attenuator	DC-4000	-105	50	4.3-10 F/M	56
78710645	6 dB Attenuator	DC-4000	-105	50	4.3-10 F/M	56
78711045	10 dB Attenuator	DC-4000	-105	50	4.3-10 F/M	56
78711545	15 dB Attenuator	DC-4000	-105	50	4.3-10 F/M	56
78712545	20 dB Attenuator	DC-4000	-105	50	4.3-10 F/M	56
78713045	30 dB Attenuator	DC-4000	-105	50	4.3-10 F/M	56
78714045	40 dB Attenuator	DC-4000	-105	50	4.3-10 F/M	56
78710355	3 dB Attenuator	DC-4000	-105	100	4.3-10 F/M	57
78710655	6 dB Attenuator	DC-4000	-105	100	4.3-10 F/M	57
78711055	10 dB Attenuator	DC-4000	-105	100	4.3-10 F/M	57
78711555	15 dB Attenuator	DC-4000	-105	100	4.3-10 F/M	57
78712055	20 dB Attenuator	DC-4000	-105	100	4.3-10 F/M	57
78713055	30 dB Attenuator	DC-4000	-105	100	4.3-10 F/M	57

# 7871xx15

Attenuator 5W 4.3-10  
DC-4000

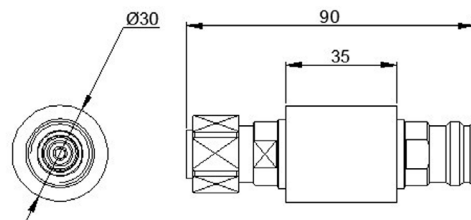
## Attenuator DC-4000 5W

Type	78710315	78710615
Attenuation (dB)	3	6
Attenuation Tolerance (dB)	±0.7	±0.7

Electrical Specifications	
Frequency (MHz)	DC - 4000
PIM3 (dBc, @2x33dBm)	≤ -120
Impedance (Ω)	50
Return Loss (dB)	≥ 21
Max Input Power (W)	5
Connector	4.3-10 F/M

Mechanical and Environmental Specifications	
Dimension (mm)**	Ø30 x 35
Weight (kgs)*	0.22
Ingress Protection	IP55
Operating Temperature (°C)	-55 to +125
Operating RH (%)	≤ 95

Packing Information	
Packing Size (mm)	70 x 30 x 30
SKU (unit/inner carton)	100 pieces per inner carton/box



# 7871xx10

Attenuator 10W 4.3-10  
DC-4000

## Attenuator DC-4000 10W

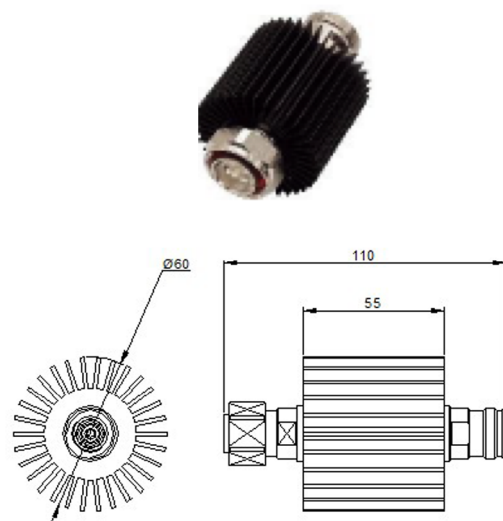
Type	78710310	78710610	78711010	78711510
Attenuation (dB)	3	6	10	15
Attenuation Tolerance (dB)	±0.7	±0.7	±0.7	±0.7

Type	78712010	78713010	78714010
Attenuation (dB)	20	30	40
Attenuation Tolerance (dB)	±0.7	±0.8	±0.8

Electrical Specifications	
Frequency (MHz)	DC - 4000
PIM3 (dBc, @2x33dBm)	≤ -120
Impedance (Ω)	50
Return Loss (dB)	≥ 21
Max Input Power (W)	10
Connector	4.3-10 F/M

Mechanical and Environmental Specifications	
Dimension (mm)**	Ø55 x 69
Weight (kgs)*	4.3-10 F/M: 0.30
Ingress Protection	IP55
Operating Temperature (°C)	-55 to +125
Operating RH (%)	≤ 95

Packing Information	
Packing Size (mm)	160 x 70 x 70
SKU (unit/inner carton)	50 pieces per inner carton/box



\* including mounting bracket and connectors  
\*\* excluding mounting bracket and connectors

# 7871xx85

Attenuator 15W 4.3-10  
DC-4000

## Attenuator DC-4000 15W

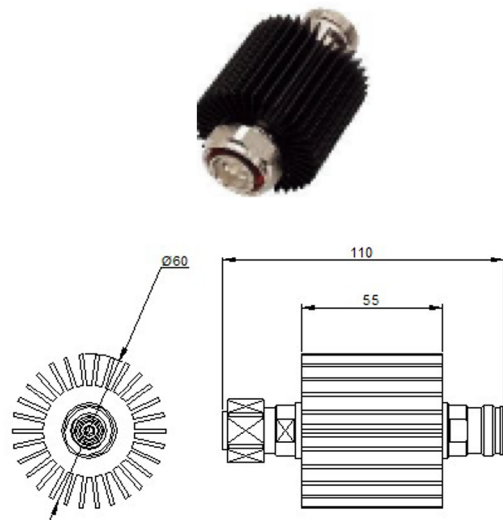
Type	78710385	78710685	78711085	78711585
Attenuation (dB)	3	6	10	15
Attenuation Tolerance (dB)	±0.7	±0.7	±0.7	±0.7

Type	78712085	78713085	78714085
Attenuation (dB)	20	30	40
Attenuation Tolerance (dB)	±0.7	±0.8	±0.8

Electrical Specifications	
Frequency (MHz)	DC - 4000
PIM3 (dBc, @2x33dBm)	≤ -120
Impedance (Ω)	50
Return Loss (dB)	≥ 21
Max Input Power (W)	15
Connector	4.3-10 F/M

Mechanical and Environmental Specifications	
Dimension (mm)**	Ø60 x 55
Weight (kgs)*	4.3-10 F/M: 0.30
Ingress Protection	IP55
Operating Temperature (°C)	-55 to +125
Operating RH (%)	≤ 95

Packing Information	
Packing Size (mm)	160 x 70 x 70
SKU (unit/inner carton)	50 pieces per inner carton/box



\* including mounting bracket and connectors  
\*\* excluding mounting bracket and connectors

# 7871xx25

Attenuator 25W 4.3-10  
DC-4000

## Attenuator DC-4000 25W

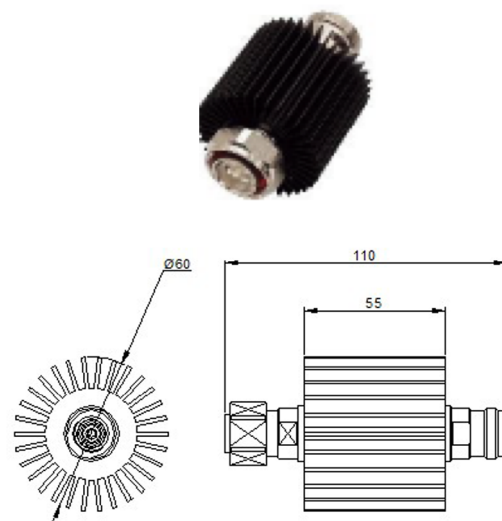
Type	78710325	78710625	78711025	78711525
Attenuation (dB)	3	6	10	15
Attenuation Tolerance (dB)	±0.7	±0.7	±0.7	±0.7

Type	78712025	78713025	78714025
Attenuation (dB)	20	30	40
Attenuation Tolerance (dB)	±0.7	±0.8	±0.8

Electrical Specifications	
Frequency (MHz)	DC - 4000
PIM3 (dBc, @2x33dBm)	≤ -120
Impedance (Ω)	50
Return Loss (dB)	≥ 21
Max Input Power (W)	25
Connector	4.3-10 F/M

Mechanical and Environmental Specifications	
Dimension (mm)**	Ø60 x 55
Weight (kgs)*	4.3-10 F/M: 0.30
Ingress Protection	IP55
Operating Temperature (°C)	-55 to +125
Operating RH (%)	≤ 95

Packing Information	
Packing Size (mm)	160 x 70 x 70
SKU (unit/inner carton)	50 pieces per inner carton/box



\* including mounting bracket and connectors  
\*\* excluding mounting bracket and connectors

# 7871xx45

Attenuator 50W 4.3-10  
DC-4000

## Attenuator DC-4000 50W

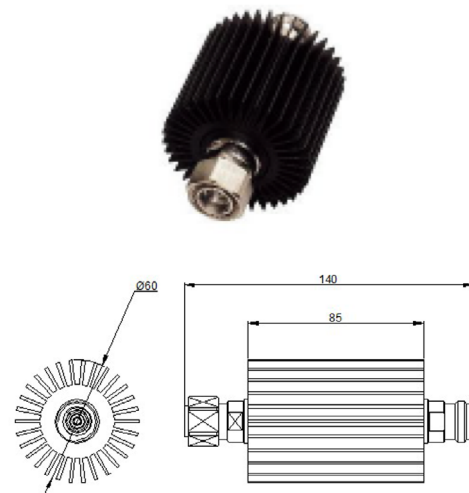
Type	78710345	78710645	78711045	78711545
Attenuation (dB)	3	6	10	15
Attenuation Tolerance (dB)	±0.7	±0.7	±0.7	±0.7

Type	78712045	78713045	78714045
Attenuation (dB)	20	30	40
Attenuation Tolerance (dB)	±0.7	±0.8	±0.8

Electrical Specifications	
Frequency (MHz)	DC - 4000
PIM3 (dBc, @2x43dBm)	≤ -120
Impedance (Ω)	50
Return Loss (dB)	≥ 21
Max Input Power (W)	50
Connector	4.3-10 F/M

Mechanical and Environmental Specifications	
Dimension (mm)**	Ø60 x 85
Weight (kgs)*	4.3-10 F/M: 0.45
Ingress Protection	IP55
Operating Temperature (°C)	-55 to +125
Operating RH (%)	≤ 95

Packing Information	
Packing Size (mm)	160 x 70 x 70
SKU (unit/inner carton)	50 pieces per inner carton/box



\* including mounting bracket and connectors  
\*\* excluding mounting bracket and connectors



# 7871xx55

Attenuator 100W 4.3-10  
DC-4000

## Attenuator DC-4000 100W

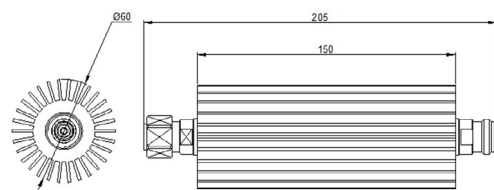
Type	78710355	78710655	78711055	78711555
Attenuation (dB)	3	6	10	15
Attenuation Tolerance (dB)	±0.7	±0.7	±0.7	±0.7

Type	78712055	78713055
Attenuation (dB)	20	30
Attenuation Tolerance (dB)	±0.7	±0.8

Electrical Specifications	
Frequency (MHz)	DC - 4000
PIM3 (dBc, @2x43dBm)	≤ -105
Impedance (Ω)	50
Return Loss (dB)	≥ 21
Max Input Power (W)	100
Connector	4.3-10 F/M

Mechanical and Environmental Specifications	
Dimension (mm)**	Ø60 x 150
Weight (kgs)*	4.3-10 F/M: 0.95
Ingress Protection	IP55
Operating Temperature (°C)	-55 to +125
Operating RH (%)	≤ 95

Packing Information	
Packing Size (mm)	225 x 70 x 70
SKU (unit/inner carton)	50 pieces per inner carton/box



\* including mounting bracket and connectors  
\*\* excluding mounting bracket and connectors

# Low PIM attenuators

---

Low PIM Attenuators are used mainly where a power reduction is needed to reach a certain level in a transmission line keeping an excellent intermodulation level  $-160\text{dBc}$ . Different input power starting from 25W up to 200W with 4.3-10 connectors can be found in our portfolio.

Part Number	Description	MHz	IM3 (dBc)	Input Power (W)	Connector Type	Page
78720334	3 dB Attenuator	698 - 4000	-160	25	4.3-10 F/M	60
78720634	6 dB Attenuator	698 - 4000	-160	25	4.3-10 F/M	60
78721034	10 dB Attenuator	698 - 4000	-160	25	4.3-10 F/M	60
78721534	15 dB Attenuator	698 - 4000	-160	25	4.3-10 F/M	60
78722034	20 dB Attenuator	698 - 4000	-160	25	4.3-10 F/M	60
78723034	30 dB Attenuator	698 - 4000	-160	25	4.3-10 F/M	60
78710344	3 dB Attenuator	698 - 4000	-160	50	4.3-10 F/M	61
78710644	6 dB Attenuator	698 - 4000	-160	50	4.3-10 F/M	61
78711044	10 dB Attenuator	698 - 4000	-160	50	4.3-10 F/M	61
78711544	15 dB Attenuator	698 - 4000	-160	50	4.3-10 F/M	61
78712044	20 dB Attenuator	698 - 4000	-160	50	4.3-10 F/M	61
78713044	30 dB Attenuator	698 - 4000	-160	50	4.3-10 F/M	61
78710354	3 dB Attenuator	698 - 4000	-160	100	4.3-10 F/M	62
78710654	6 dB Attenuator	698 - 4000	-160	100	4.3-10 F/M	62
78711054	10 dB Attenuator	698 - 4000	-160	100	4.3-10 F/M	62
78711554	15 dB Attenuator	698 - 4000	-160	100	4.3-10 F/M	62
78712054	20 dB Attenuator	698 - 4000	-160	100	4.3-10 F/M	62
78713054	30 dB Attenuator	698 - 4000	-160	100	4.3-10 F/M	62
78710364	3 dB Attenuator	698 - 4000	-160	200	4.3-10 F/M	63
78710664	6 dB Attenuator	698 - 4000	-160	200	4.3-10 F/M	63
78711064	10 dB Attenuator	698 - 4000	-160	200	4.3-10 F/M	63
78711564	15 dB Attenuator	698 - 4000	-160	200	4.3-10 F/M	63
78712064	20 dB Attenuator	698 - 4000	-160	200	4.3-10 F/M	63
78713064	30 dB Attenuator	698 - 4000	-160	200	4.3-10 F/M	63

# 7872xx34

## Attenuator 698-4000 25W

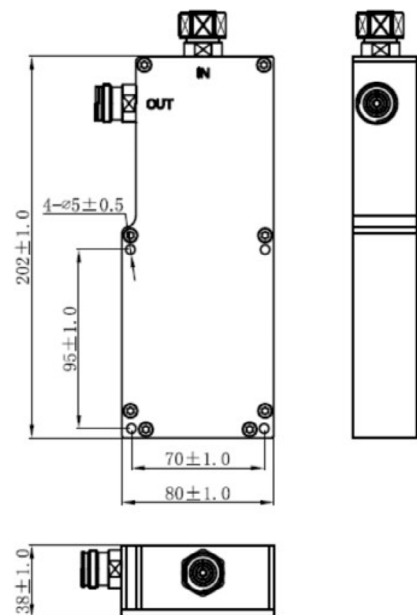
Low PIM Attenuator 25W 4.3-10  
698-4000

Type	78720334	78720634	78721034	78721534	78722034	78723034
Attenuation (dB)	3	6	10	15	20	30
Attenuation Tolerance (dB)	±0.6	±1.0	±1.0	±1.0	±1.3	±1.3

Electrical Specifications	
Frequency (MHz)	698 - 4000
PIM3 (dBc, @2x43dBm)	≤ -160
Impedance (Ω)	50
Return Loss (dB)	≥ 19
Max Input Power (W)	25
Connector	4.3-10 F/M

Mechanical and Environmental Specifications	
Dimension (mm)**	202 x 80 x 38
Weight (kgs)*	1.6
Ingress Protection	IP65
Operating Temperature (°C)	-40 to +65
Operating RH (%)	≤ 95

Packing Information	
Packing Size (mm)	250 x 90 x 50
SKU (unit/inner carton)	8 pieces per inner carton/ box



\* including mounting bracket and connectors  
\*\* excluding mounting bracket and connectors

# 7871xx44

Low PIM Attenuator 50W 4.3-10  
698-4000

## Attenuator 698-4000 50W

Type	78710344	78710644	78711044	78711544	78712044	78713044
Attenuation (dB)	3	6	10	15	20	30
Attenuation Tolerance (dB)	±0.6	±1.0	±1.0	±1.0	±1.3	±1.3

### Electrical Specifications

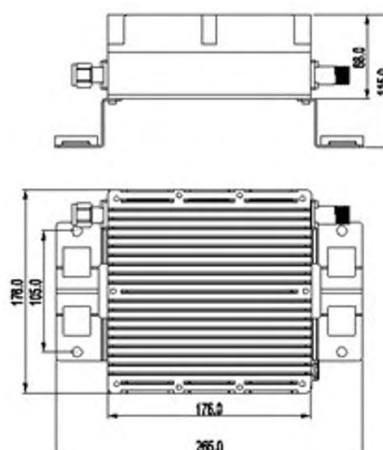
Frequency (MHz)	698 - 4000
PIM3 (dBc, @2x43dBm)	≤ -160
Impedance (Ω)	50
Return Loss (dB)	≥ 19
Max Input Power (W)	50
Connector	4.3-10 F/M

### Mechanical and Environmental Specifications

Dimension (mm)**	176 x 176 x 68
Weight (kgs)*	3.7
Ingress Protection	IP65
Operating Temperature (°C)	-40 to +65
Operating RH (%)	≤ 95

### Packing Information

Packing Size (mm)	415 x 290 x 265
SKU (unit/inner carton)	4 pieces per inner carton/ box



\* including mounting bracket and connectors  
\*\* excluding mounting bracket and connectors

# 7871xx54

Low PIM Attenuator 100W 4.3-10  
698-4000

## Attenuator 698-4000 100W

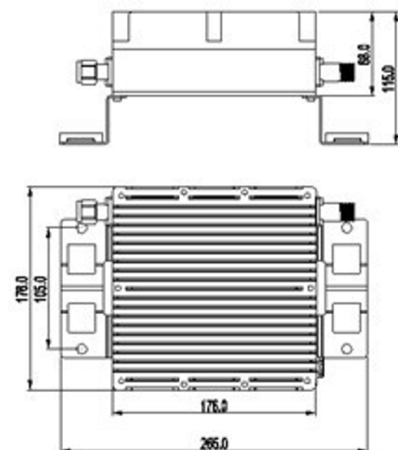
Type	78710354	78710654	78711054	78711554
Attenuation (dB)	3	6	10	15
Attenuation Tolerance (dB)	±0.6	±1.0	±1.0	±1.0

Type	78712054	78713054
Attenuation (dB)	20	30
Attenuation Tolerance (dB)	±1.3	±1.3

Electrical Specifications	
Frequency (MHz)	698 - 4000
PIM3 (dBc, @2x43dBm)	≤ -160
Impedance (Ω)	50
Return Loss (dB)	≥ 19
Max Input Power (W)	100
Connector	4.3-10 F/M

Mechanical and Environmental Specifications	
Dimension (mm)**	176 x 176 x 97.5
Weight (kgs)*	4.3-10 F/M: 4.7
Ingress Protection	IP65
Operating Temperature (°C)	-40 to +65
Operating RH (%)	≤ 95

Packing Information	
Packing Size (mm)	415 x 290 x 265
SKU (unit/inner carton)	54 pieces per inner carton/ box



\* including mounting bracket and connectors  
\*\* excluding mounting bracket and connectors

# 7871xx64

## Attenuator 698-4000 200W

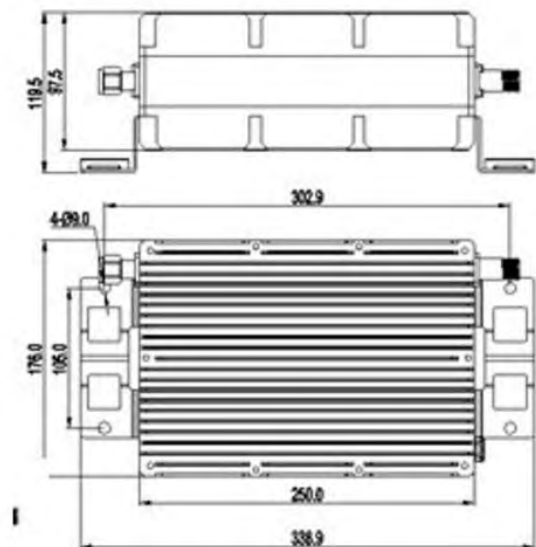
Low PIM Attenuator 200W 4.3-10  
698-4000

Type	78710364	78710664	78711064	78711564	78712064	78713064
Attenuation (dB)	3	6	10	15	20	30
Attenuation Tolerance (dB)	±0.6	±1.0	±1.0	±1.0	±1.3	±1.3

Electrical Specifications	
Frequency (MHz)	698 - 4000
PIM3 (dBc, @2x43dBm)	≤ -160
Impedance (Ω)	50
Return Loss (dB)	≥ 19
Max Input Power (W)	200
Connector	4.3-10 F/M

Mechanical and Environmental Specifications	
Dimension (mm)**	250 x 176 x 97.5
Weight (kgs)*	4.3-10 F/M: 7.7
Ingress Protection	IP65
Operating Temperature (°C)	-40 to +65
Operating RH (%)	≤ 95

Packing Information	
Packing Size (mm)	415 x 365 x 285
SKU (unit/inner carton)	4 pieces per inner carton/ box



\* including mounting bracket and connectors  
\*\* excluding mounting bracket and connectors

# Low PIM loads

---

ESB Low PIM loads comprises a comprehensive portfolio for the most demanding mobile telecommunications networks in the market. They guarantee an excellent intermodulation level (-160dBc) as well as minimum VSWR values in order to avoid any reflect transmission. Low PIM loads can be found with different male or female 4.3-10 connectors.



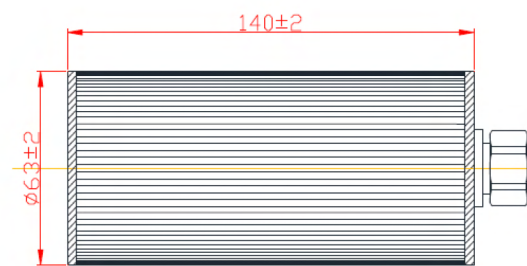
Part Number	Description	MHz	IM3 (dBc)	Input Power (W)	Connector Type	Page
75110104	Termination Load	DC-6000	-160	10W	4.3-10-F	66
75120104	Termination Load	DC-6000	-160	10W	4.3-10-M	66
75110504	Termination Load	DC-4000	-160	50W	4.3-10-F	67
75120504	Termination Load	DC-4000	-160	50W	4.3-10-M	67
75111004	Termination Load	DC-4000	-160	100W	4.3-10-F	68
75121004	Termination Load	DC-4000	-160	100W	4.3-10-M	68
75112004	Termination Load	DC-4000	-160	200W	4.3-10-F	69
75122004	Termination Load	DC-4000	-160	200W	4.3-10-M	69

# 751x0104

## Termination Load 50ohm DC-6000 10W

Termination Load 50 ohm  
Low PIM: -160dBc 10W  
DC-6000 4.3-10: -Male / Female

Type	75110104 (4.3-10-Female)	75120104 (4.3-10-Male)
Power Rating (W)	10	
Frequency (MHz)	DC - 6000	
PIM3 (dBc)	-160	
Impedance (Ω)	50	
VSWR	≤ 1.20	
Dimension (mm)**	140 x φ63	
Weight (kgs)*	Female: 0.715	
	Male: 0.715	
Application	Indoor	
Packing dimensions	210 × 65 × 65	



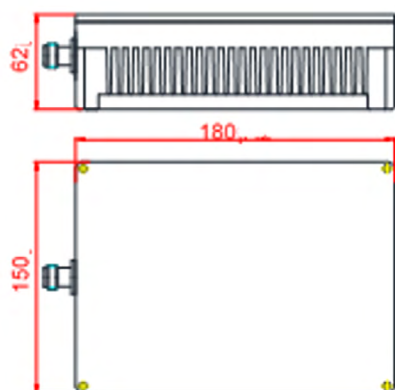
\* including connector  
\*\* excluding connector

# 751x0504

## Termination Load 50ohm DC-4000 50W

Termination Load 50 ohm  
Low PIM: -160dBc 50W  
DC-4000 4.3-10: -Male / Female

Type	75110504 (4.3-10-Female)	75120504 (4.3-10-Male)
Power Rating (W)	50	
Frequency (MHz)	DC - 4000	
PIM3 (dBc)	See Above Type Number Selection Table	
Impedance ( $\Omega$ )	50	
VSWR	$\leq 1.20$	
Dimension (mm)**	180 x 150 x 62	
Weight (kgs)*	Female: 2.545 approx.	
	Male: 2.530 approx.	
Ingress Protection	IP65	



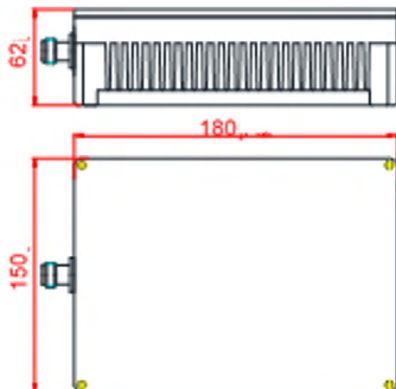
\* including connector  
\*\* excluding connector

# 751X1004

## Termination Load 50ohm DC-4000 100W

Termination Load 50 ohm  
Low PIM: -160dBc 100W  
DC-4000 4.3-10: -Male / Female

Type	75111004 (4.3-10-Female)	75121004 (4.3-10-Male)
Power Rating (W)	100	
Frequency (MHz)	DC - 4000	
PIM3 (dBc)	-160	
Impedance ( $\Omega$ )	50	
VSWR	$\leq 1.20$	
Dimension (mm)**	180 x 150 x 62	
Weight (kgs)*	Female: 2.545 approx.	
	Male: 2.530 approx.	
Ingress Protection	IP65	
Operating temperature ( $^{\circ}\text{C}$ )	-40 to +80	

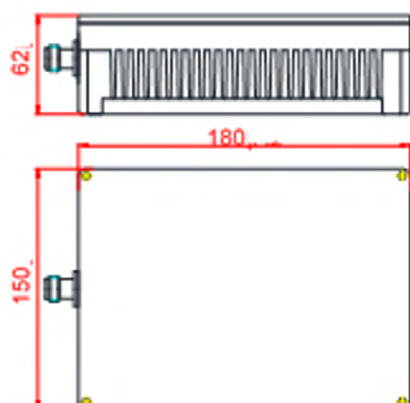


\* including connector  
\*\* excluding connector

**751X2004****Termination Load  
50ohm DC-4000 200W**

Termination Load 50 ohm  
 Low PIM: -160dBc 200W  
 DC-4000 4.3-10: -Male / Female

Type	75112004 (4.3-10-Female)	75122004 (4.3-10-Male)
Power Rating (W)	200	
Frequency (MHz)	DC - 4000	
PIM3 (dBc)	-160	
Impedance ( $\Omega$ )	50	
VSWR	$\leq 1.20$	
Dimension (mm)**	180 x 150 x 62	
Weight (kgs)*	Female: 2.595 approx.	
	Male: 2.580 approx.	
Ingress Protection	IP65	
Operating temperature ( $^{\circ}\text{C}$ )	-40 to +80	

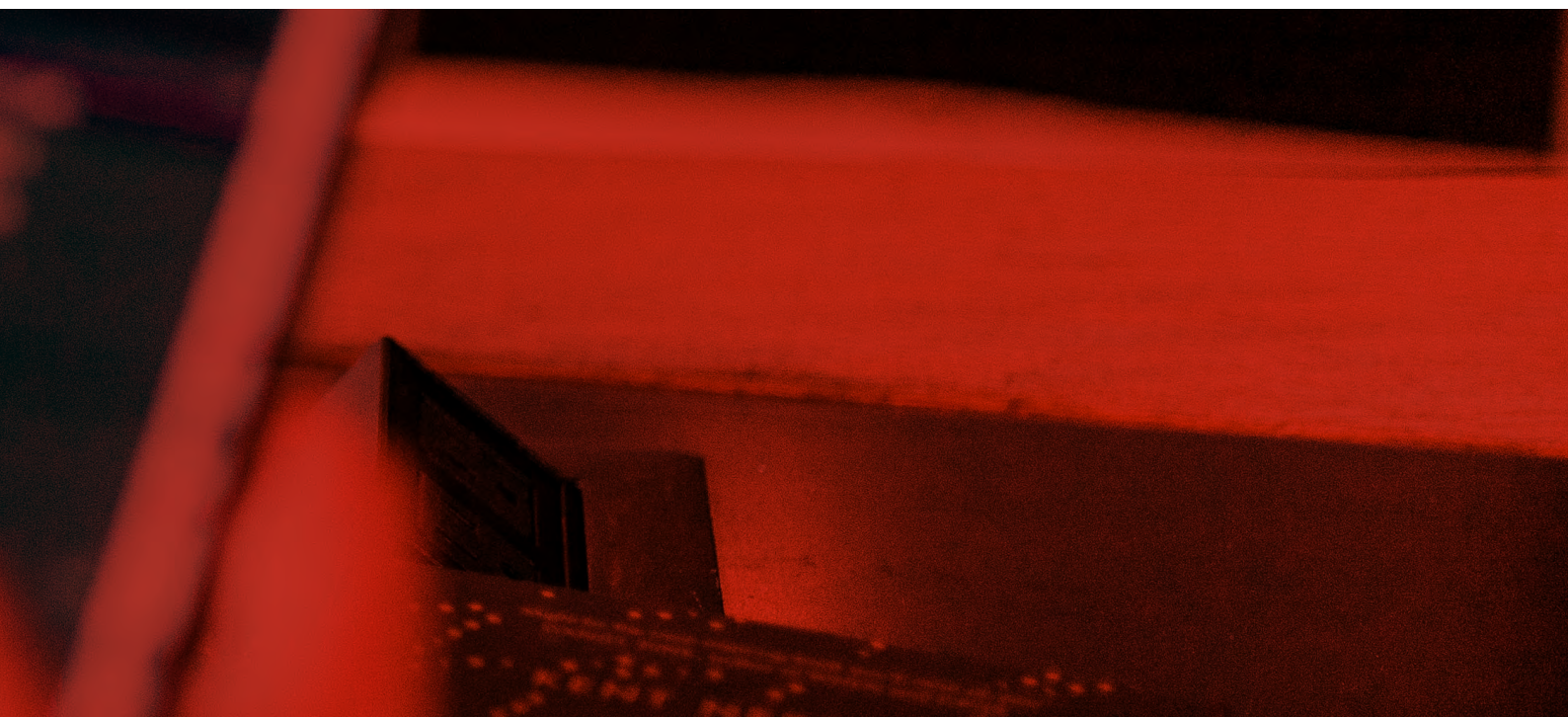


\* including connector

\*\* excluding connector



# Antenna line products



## ● **Antenna line products**

- Hybrid Combiners **\_72**
- Special Antennas **\_80**
- Smallcell Antennas **\_94**
- Multi-band Combiners **\_106**

# Hybrid Combiners

---

Low PIM ESB hybrid combiners are basically used to combine a signal into equal shares with the maximum port isolation needed in current mobile networks. 2x2, 3x3 and 4x4 versions are available covering different frequency range for each scenario.



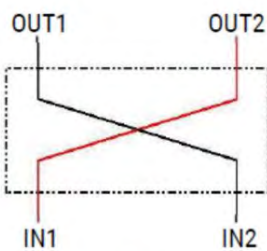
Part Number	Description	MHz	IM3 (dBc)	Input Power (W)	Connector Type	Page
78211527v01	Hybrid combiner 2x2	555-6000	-160	500	4.3-10-F	74
78211380	Hybrid combiner 2x2	380-3800	-160	500	4.3-10-F	75
78211536v01	Hybrid combiner 4x4	698-4200	-160	500	4.3-10-F	76
78211533Hlv01	Hybrid combiner 3x3	698-4200	-160	500	4.3-10-F	77
78211359	Dual hybrid combiner	3300-5925	-161	400	4.3-10-F	78

# 78211527v01

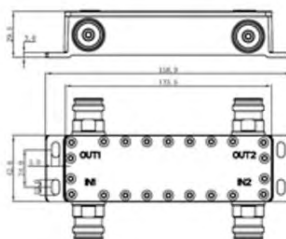
## 2:2 Hybrid Combiner 550-6000Mhz

Hybrid Combiner 2-in/2-out  
PIM -160dBc  
550-6000Mhz

Type	78211527v01
Frequency (MHz)	550-6000
Coupling (dB)	3
Insertion Loss (dB)	±1.4 (550-610Mhz) ±0.8 (610-6000Mhz)
VSWR	≤ 1.35
Isolation (dB)	≥ 23
PIM3 (dBc, @2x43dBm)	≤ -160
Input Impedance (ohm)	50
Max. Input Power (W)	200
Peak Power (W)	1000
Connector	4.3-10 Female
Weight (kgs)*	0.60
AISG/DC Bypass Path (2500mA Max)	IN1 ↔ OUT1 IN2 ↔ OUT2
Dimension (mm)**	131 x 40 x 38.4
Ingress Protection Class	IP65 (for outdoor and indoor)
Operating RH (%)	≤ 95
Operating Temperature (°C)	-40 to +65
Mounting	Wall Mount
Colour	Light Grey



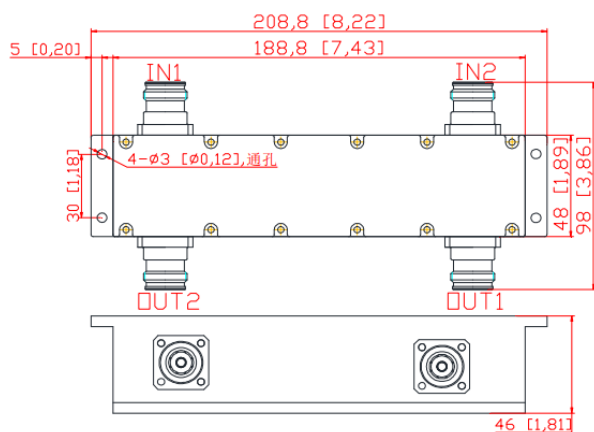
Schematic Diagram



\* including mounting bracket and connectors  
\*\* excluding mounting bracket and connectors

**78211380****2:2 Hybrid Combiner  
380-3800Mhz**Hybrid Combiner 2-in/2-out  
PIM -160dBc  
380-3800Mhz

Type	78211380
Frequency (MHz)	380-3800
Insertion Loss (dB)	$3 \pm 1.0$
VSWR	$\leq 1.25$
Isolation (dB)	$\geq 23$
PIM3 (dBc, @2x43dBm)	$\leq -160$
Input Impedance (ohm)	50
Max. Input Power (W)	500
Peak Power (W)	1,500
Connector	4.3-10 Female
Weight (kgs)*	$1.1 \pm 0.55$
AISG/DC Bypass Path (2500mA Max)	IN1 $\leftrightarrow$ OUT1 IN2 $\leftrightarrow$ OUT2
Dimension (mm)**	188.8 x 48 x 46
Ingress Protection Class	IP65 (for outdoor and indoor)
Operating RH (%)	$\leq 95$
Operating Temperature (°C)	-40 to +65
Mounting	Wall Mount
Colour	Light Grey

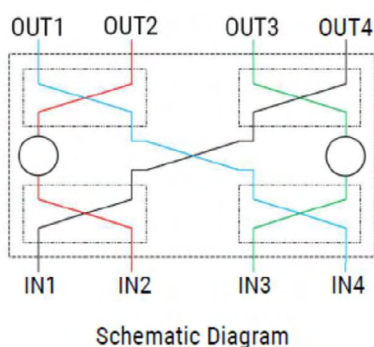
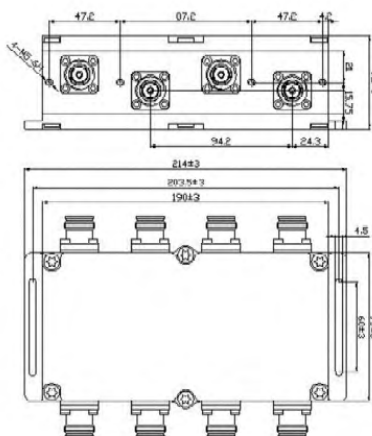


# 78211536v01

## 4:4 Hybrid Combiner 698-4000Mhz

Hybrid Combiner 4-in/4-out  
PIM -160dBc  
698-4200Mhz

Type	78211536v01	
Frequency (MHz)	698-4000	
Insertion Loss (dB)	698-2700: 6 ±1.5	2700-4200: 6 ±1.5
Return Loss (dB)	698-2700: ≥ 19	2700-4200: ≥ 18
VSWR	≤ 1.3	
Isolation (dB)	≥ 23	
PIM3 (dBc, @2x43dBm)	≤ -160	
Input Impedance (ohm)	50	
Max. Input Power (W)	500	
Peak Power (W)	1,500	
Connector	4.3-10 Female	
Weight (kgs)	2.2	
Dimension (mm)*	214 x 99.4 x 62	
Ingress Protection Class	IP65 (for outdoor and indoor)	
Operating RH (%)	≤ 95	
Operating Temperature (°C)	-40 to +65	
Mounting	Built-in Bracket for wall mount or pole mount	
Colour	Light Grey	

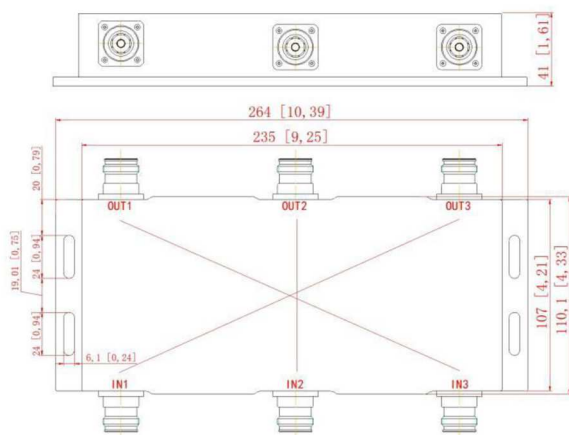


## 78211533HIv01

### 3:3 Hybrid Combiner 698-4200Mhz

Hybrid Combiner 3-in/3-out  
PIM -160dBc  
698-4200Mhz

Type	78211533HI
Frequency (MHz)	698-4200
Distribution Loss (dB)	≤ 5.5
Insertion Loss (dB)	±1.2
Isolation (dB)	≥ 25
PIM3 (dBc, @2x43dBm)	≤ -160
VSWR	≤ 1.30
Input Impedance (ohm)	50
Max. Input Power (W)	500
Peak Power (W)	1,500
AISG/DC Bypass Path (2500mA Max)	IN1 ↔ OUT3 IN2 ↔ OUT2 IN3 ↔ OUT1
Connector	4.3-10F
Dimension (mm)	235 x 107 x 41 (excluding mounting bracket and connectors)
Operating Temperature (°C)	-40 to +80
Operating Humidity (%)	≤ 95
Ingress Protection Class	IP65
Mounting	Wall Mount

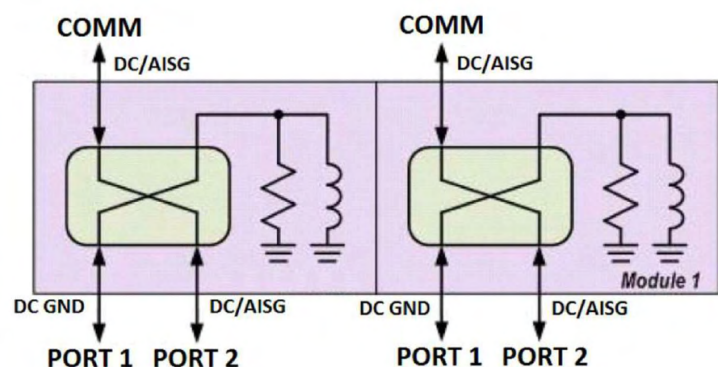


# 78211359

## Dual Hybrid Combiner 3300-5925MHz, 4.3-10 F, -161dBc, IP65

Hybrid Combiner 4-in/2-out  
PIM -161dBc  
3300-5925Mhz

Type	78211359
Frequency (MHz)	3300-5925
Insertion Loss (dB)	3.2±0.5
Isolation (dB)	≥ 22
PIM3 (dBc, @2x43dBm)	≤ -161
VSWR	≤ 1.25
Input Impedance (ohm)	50
Input Power Peak power (W)	400
Peak Power (W)	1500
AISG carrier	2176KHz ± 100ppm
DC current/max AISG	2.5A
DC pass-through	Branch 2
Lightning surge current	10 kA
Lightning surge current waveform	8/20 waveform
Connector	4.3-10F
Dimension (mm, excluding bracket and connectors)	200x110x75
Operating Temperature (°C)	-40 to +80
Operational Humidity (%)	≤ 95
Ingress Protection	IP65
Mounting	Wall Mount or pole mount





# Special antennas

---

ESB special antennas are designed to deliver maximum performance in harsh environments in line with the most demanding new 5G networks. The product portfolio ranges from antennas for rural environments, through antennas for high gain tunnels and 2x2 MIMO technology to antennas designed for private networks.



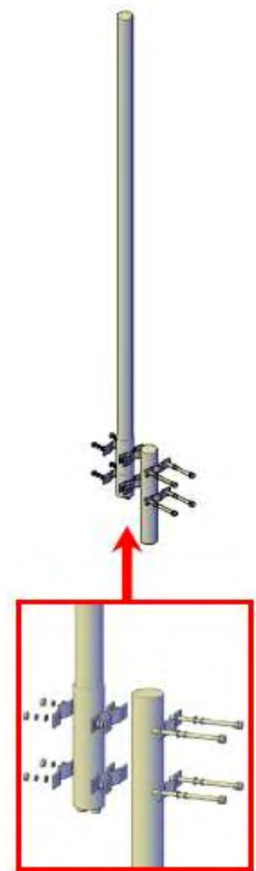
Part Number	Type	Inputs	Connector	MHz	Gain (dB)	Page
80011747/2	Omni	2port	4.3-10-F	698-960	7.5dB	82
80011275	Omni	2port	4.3-10-F	1710-2700	10dB	83
80112014	Quasi-Omni	4port	4.3-10-F	698-2690	8dB/12dB	84
74212011	Log-per	1port	4.3-10F	698-4000	11dB	85
74252011	Log-per	1port	7/16F	698-4000	11dB	85
74212010	Log-per	1port	4.3-10F	698-4000	12/14dB	86
74252010	Log-per	1port	7/16F	698-4000	12/14dB	86
74212012	Log-per	2port	4.-3-10F	698-4000	10/11dB	87
74252012	Log-per	2port	7/16F	698-4000	10/11dB	87
74211014	Log-per	4port	4.3-10F	3300-3800	12dB	88
74231014	Log-per	4port	N-F	3300-3800	12dB	88
74212033	Log-per	2port	4.3-10F	2500-2700	14dB	89
74211025	Log-per	2port	4.3-10F	3300-3800	12dB	90
74211037	Log-per	2port	4.3-10F	3300-3800	15dB	91
78712071	Directional Pannel	2port	4.3-10F	2500-2701	19dB	92

# 80011747/2

Omni Antenna  
 VV-Pol 2-port 7.5dBi  
 698-960MHz

## VV-Pol Omni 698-960Mhz 7.5dBi Outdoor

Type	80011747/2
Frequency Range (MHz)	698-960
Gain (dBi)	7.5
VSWR	≤ 1.7
3rd Order PIM (dBc)	≤ -150 @ 2x43dBm
Polarization	Vertical / Vertical
Horizontal Beamwidth (°)	360
Vertical Beamwidth (°)	15
Pre-set Electrical Tilt (°)	2
Input Impedance (ohm)	50
Max. Input Power (W)	250 per port
Lightning Protection	DC Grounded
Connector Type	2 x 4.3-10 Female
Dimension (mm)	Ø76 x 3,200
Weight (kgs)	10.5
Radome Material	Fiber Glass
Radiator Material	Copper
Operating Temperature (°C)	-40 to +65
Max. Wind Velocity (km/h)	210
Mounting	Mounting Clamp for Pole Ø60-Ø110 included

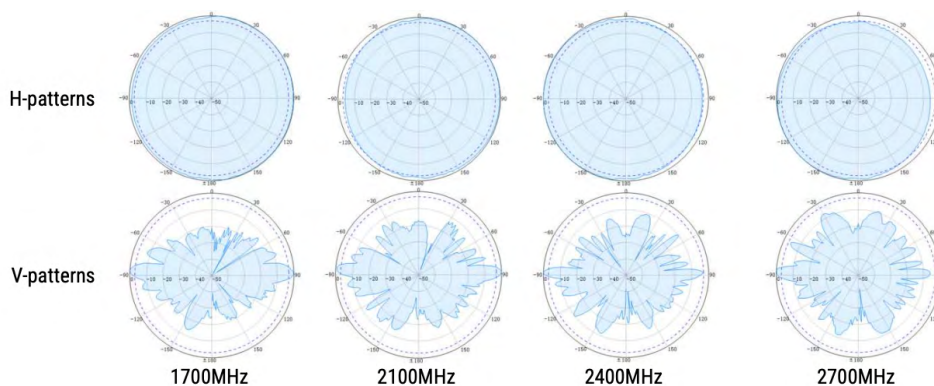


# 80011275

Omni Antenna  
VV-Pol 2-port 10dBi  
1710-2700Mhz

## VV-Pol Omni 1710-2700Mhz 10dBi Outdoor

Type	80011275		
Frequency Range (MHz)	1695-2300	2300-2500	2500-2700
Gain (dBi)	9 ±0.5	10 ±0.5	9 ±0.5
VSWR	≤ 1.8	≤ 1.8	≤ 1.8
3rd Order PIM (dBc)	≤ -150 @ 2x43dBm		
Isolation	>20dB		
Polarization	Vertical / Vertical		
Horizontal Beamwidth (°)	360		
Vertical Beamwidth (°)	8	6	5
Ingress Protection Class	0		
Pre-set Electrical Tilt (°)	50		
Input Impedance (ohm)	-25 to +65		
Max. Input Power (W)	150 per port		
Lightning Protection	DC Grounded		
Connector Type	2 x 4.3-10 Female		
Dimension (mm)	Ø52 x 2,500		
Weight (kgs)	4		
Radome Material	Fiber Glass		
Radiator Material	Copper		
Operating Temperature (°C)	-40 to +65		
Max. Wind Velocity (km/h)	210		
Mounting	Mounting Clamp for Pole Ø60-Ø110 included		

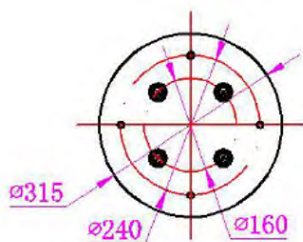
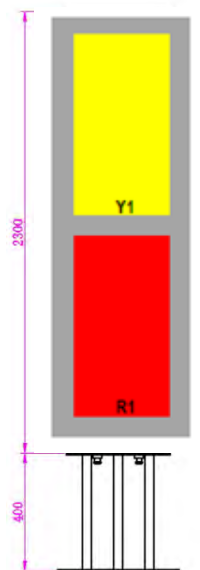
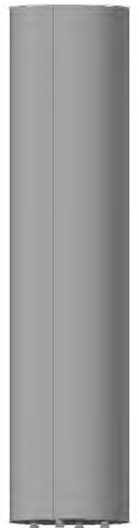


# 800112014

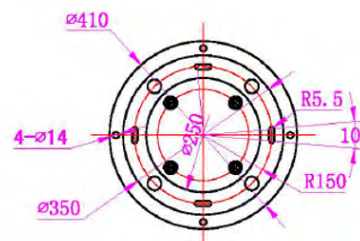
## X-Pol Quasi-Omni 698-960 / 1710-2690 8/12dBi

Quasi-Omni Antenna  
XX-Pol 4-port 8/12dBi  
698-960 / 1710-2690

Type	800112014	
Frequency Range (MHz)	698-960	1710-2690
Gain (dBi)	8	12
VSWR	≤ 1.7	
3rd Order PIM (dBc)	≤ -150 @ 2x43dBm	
Polarization	±45°	
Isolation (dB)	≥ 18	≥ 18
Horizontal Beamwidth (°)	360	
Vertical Beamwidth (°)	12	7
Input Impedance (ohm)	50	
Max. Input Power (W)	250	
Lightning Protection	DC Grounded	
Connector Type	2 x 4.3-10 Female	2 x 4.3-10 Female
Dimension (mm)	Ø315 x 2,300	
Weight (kgs)	15	
Radome Material	Fiber Glass	
Reflector Material	Aluminum	
Operating Temperature (°C)	-40 to +65	
Max. Wind Velocity (km/h)	200	
Mounting	Floor Mount with Steel Stand (Supplied)	



Bottom View - Antenna



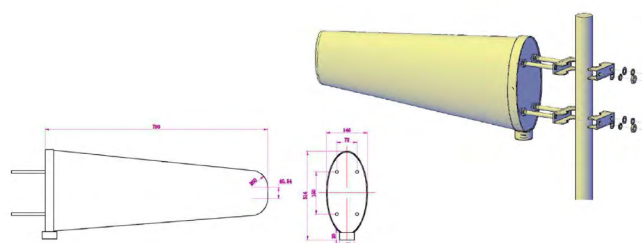
Bottom View - Stand

# 742x2011

## Log Periodic Antenna 690-4000 11dBi

Log Periodic Antenna  
V-Pol 1-port 11dBi  
690-4000

Type	74212011			74252011		
Frequency Range (M Hz)	690-960	960-1695	1695-2200	2200-2490	2490-2690	3300-3800
Gain (dBi, typ.)	10.3	11.0	11.0	11.0	11.0	10.5
VSWR	≤ 1.5	≤ 1.5	≤ 1.5	≤ 1.5	≤ 1.5	≤ 1.5
Polarization	Vertical					
PIM3 (dBc), @2x43dBm	≤ -150					
Horizontal Beamwidth (°)	67	57	53	47	41	63
Vertical Beamwidth (°)	54	50	48	45	44	55
Front-to-Back Ratio (dB)	≥ 20	≥ 20	≥ 25	≥ 25	≥ 25	≥ 25
Input Impedance (Ω)	50					
Max. Input Power (W)	250	250	200	200	200	200
Lightning Protection	DC Grounded					
Connector Type	1 x 4.3-10 Female			1 x 7/16 Female		
Dimension (mm)	300 x 155 x 785					
Weight (kgs)	5.5					
Reflector Material	Aluminum					
Radome Material	Fiber Glass					
Rated Wind Velocity (km/h)	200					
Operating Temperature (°C)	-40 to +65					
Mounting	Pole Mount for Ø38 to Ø52 included					
Wind Load (N) (@150km/h Wind Speed)	Frontal: 25.5   Lateral: 143.1   Rearside: 41.8					
Complaint to Environmental Standards	Dry Heat	GB/T 2423.2		(IEC 60068-2-2)		
	Cold	GB/T 2423.1		(IEC 60068-2-1)		
	Damp Heat	GB/T 2423.3		(IEC 60068-2-78)		
	Change of Temperature	GB/T 2423.22		(IEC 60068-2-14)		
	Salt Mist	GB/T 2423.17		(IEC 60068-2-11)		
		GB/T 10125		(ISO 9227)		
	Ingress Protection	GB/T 4208		(IEC 60529)		
	Vibration	GB/T 2423.10		(IEC 60068-2-64)		
Drop Test	GB/T 2423.8 & 4857.5		(ISO 2248)			

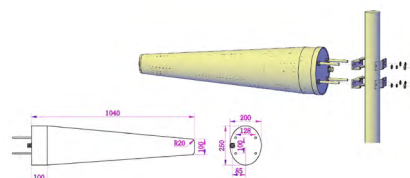


# 742x2010

## Log Periodic Antenna 690-4000 12/14dBi

Log Periodic Antenna  
V-Pol 1-port 12/14dBi  
690-4000

Type	74212010			74252010	
	Frequency Range (MHz)	690-806	806-960	1425-2170	2170-2700
Gain (dBi, typ.)	11.5	12.5	13.5	13.5	13.5
VSWR	≤ 1.5	≤ 1.5	≤ 1.5	≤ 1.5	≤ 1.5
Polarization	Vertical				
PIM3 (dBc), @2x43dBm	≤ -150				
Horizontal Beamwidth (°)	56	54	45	41	40
Vertical Beamwidth (°)	47	45	37	35	32
Front-to-Back Ratio (dB)	≥ 25	≥ 25	≥ 25	≥ 25	≥ 23
Input Impedance (Ω)	50				
Max. Input Power (W)	250				
Lightning Protection	DC Grounded				
Connector Type	1 x 4.3-10 Female		1 x 7/16 Female		
Dimension (mm)	250 x 200 x 1040				
Weight (kgs)	3.5				
Reflector Material	Copper				
Radome Material	Fiber Glass				
Rated Wind Velocity (km/h)	200				
Operating Temperature (°C)	-40 to +65				
Mounting	Pole Mount for Ø60 to Ø100 included				
Wind Load (N) (@150km/h Wind Speed)	Frontal: 33.3   Lateral: 124.5   Rearside: 54.6				
Complaint to Environmental Standards	Dry Heat	GB/T 2423.2		(IEC 60068-2-2)	
	Cold	GB/T 2423.1		(IEC 60068-2-1)	
	Damp Heat	GB/T 2423.3		(IEC 60068-2-78)	
	Change of Temperature	GB/T 2423.22		(IEC 60068-2-14)	
	Salt Mist	GB/T 2423.17		(IEC 60068-2-11)	
	Ingress Protection	GB/T 10125		(ISO 9227)	
	Vibration	GB/T 2423.10		(IEC 60068-2-64)	
	Drop Test	GB/T 2423.8 & 4857.5		(ISO 2248)	

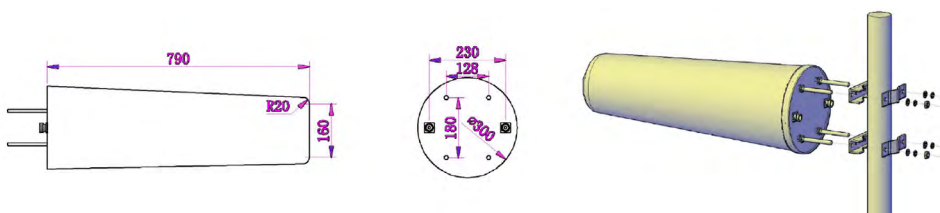


# 742x2012

## Log Periodic Antenna 690-4000 11dBi

Log Periodic Antenna  
H/V-Pol 2-port 11dBi  
690-4000

Type	74212012			74252012	
	Frequency Range (MHz)	690-960	960-1695	1695-2170	2170-2690
Gain (dBi, typ.)	9.5	10.5	11.0	11.0	10.5
VSWR	≤ 1.8	≤ 1.6	≤ 1.6	≤ 1.6	≤ 1.6
Polarization	Vertical / Horizontal				
PIM3 (dBc), @2x43dBm	≤ -150				
Horizontal Beamwidth (°)	68	65	61	58	65
Vertical Beamwidth (°)	53	50	48	45	53
Isolation (dB)	≥ 20	≥ 20	≥ 28	≥ 28	≥ 28
Front-to-Back Ratio (dB)	≥ 20	≥ 20	≥ 25	≥ 25	≥ 25
Input Impedance (Ω)	50				
Max. Input Power (W)	200				
Lightning Protection	DC Grounded				
Connector Type	2 x 4.3-10 Female			2 x 7/16 Female	
Dimension (mm)	300 x 300 x 785				
Weight (kgs)	6.5				
Reflector Material	Aluminum				
Radome Material	Fiber Glass				
Rated Wind Velocity (km/h)	200				
Operating Temperature (°C)	-40 to +65				
Mounting	Pole Mount for Ø38 to Ø52 included				
Wind Load (N) (@150km/h Wind Speed)	Frontal: 25.5   Lateral: 143.1   Rearside: 41.8				
Complaint to Environmental Standards	Dry Heat	GB/T 2423.2		(IEC 60068-2-2)	
	Cold	GB/T 2423.1		(IEC 60068-2-1)	
	Damp Heat	GB/T 2423.3		(IEC 60068-2-78)	
	Change of Temp.	GB/T 2423.22		(IEC 60068-2-14)	
	Salt Mist	GB/T 2423.17		(IEC 60068-2-11)	
	Ingress Protection	GB/T 10125		(ISO 9227)	
	Vibration	GB/T 2423.10		(IEC 60068-2-64)	
	Drop Test	GB/T 2423.8 & 4857.5		(ISO 2248)	



# 742x1014

## Log Periodic Antenna 3300-3800 12dBi

Log Periodic Antenna  
XX-Pol4-port 12dBi  
3300-3800MHz

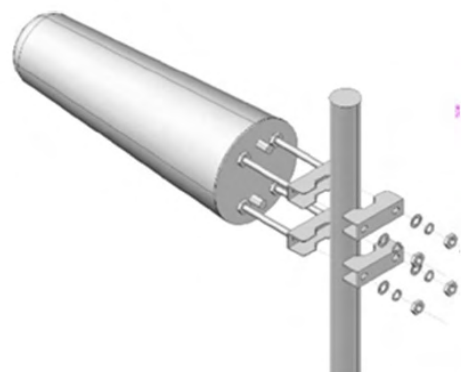
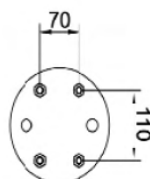
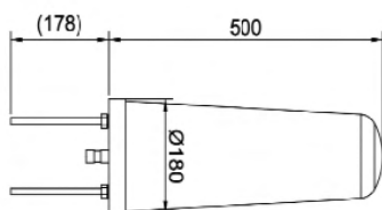
Type	74211014	74231014	
Frequency Range (MHz)	3300-3800		
Gain (dBi, typ.)	12		
VSWR	≤ 1.5		
Polarization	±45°		
PIM3 (dBc), @2x43dBm	≤ -153		
Horizontal Beamwidth (°)	55		
Vertical Beamwidth (°)	48		
Front-to-Back Ratio (dB)	≥ 20		
Input Impedance (Ω)	50		
Max. Input Power (W)	200		
Lightning Protection	DC Grounded		
Connector Type	4 x 4.3-10 Female	4 x N Female	
Dimension (mm)	Ø203 x 200		
Weight (kgs)	1.8		
Radome Material	Fiber Glass (Grey)		
Operating Temperature (°C)	-40 to +65		
Mounting	Pole Mount		
Complaint to Environmental Standards	Dry Heat	GB/T 2423.2	(IEC 60068-2-2)
	Cold	GB/T 2423.1	(IEC 60068-2-1)
	Damp Heat	GB/T 2423.3	(IEC 60068-2-78)
	Change of Temperature	GB/T 2423.22	(IEC 60068-2-14)
	Salt Mist	GB/T 2423.17	(IEC 60068-2-11)
		GB/T 10125	(ISO 9227)
	Ingress Protection	GB/T 4208	(IEC 60529)
	Vibration	GB/T 2423.10	(IEC 60068-2-64)
	Drop Test	GB/T 2423.8 & 4857.5	(ISO 2248)





**74212033****Log Periodic Antenna  
2500-2700 14dBi**Log Periodic directional  
antenna X-Pol 2-port  
2500-2700 14dBi

Type	74212033
Frequency Range (MHz)	2500-2700
Gain (dBi, typ.)	14
VSWR	≤ 1.5
Polarization	±45°
PIM3 (dBc), @2x43dBm	≤ -153
Front-to-Back Ratio (dB)	≥ 24
Isolation (dB)	≥ 25
Horizontal Beamwidth (°)	32
Vertical Beamwidth (°)	30
Input Impedance (Ω)	50
Max. Input Power (W)	200
Lightning Protection	DC Grounded
Connector Type	2 x 4.3-10 Female
Dimension (mm)	Ø180 x 500
Weight (kgs)	TBD
Max wind velocity (Km/h)	200
Wind Load (N) (@150km/h Wind Speed)	Frontal 22.92   Lateral 62.23   Rearside 40.11
Radome Material	Fiberglass, Gray (RAL7035)
Reflector Material	Aluminum
Operating Temperature (°C)	-40 to +65
Mounting	Clamps for Pole Size Ø38-Ø52mm included

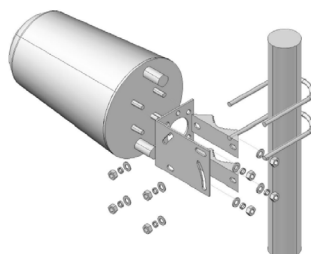


# 742x1025

## Log Periodic Antenna 3300-3800 12dBi

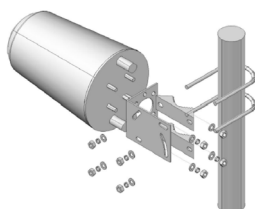
Log Periodic Antenna XPol  
2-port 12dBi  
3300-3800

Type	74211025	74231025	
Frequency Range (MHz)	3300-3800		
Gain (dBi, typ.)	12		
VSWR	≤ 1.5		
Polarization	±45°		
PIM3 (dBc), @2x43dBm	≤ -153		
Horizontal Beamwidth (°)	55		
Vertical Beamwidth (°)	48		
Front-to-Back Ratio (dB)	≥ 20		
Input Impedance (Ω)	50		
Max. Input Power (W)	200		
Lightning Protection	DC Grounded		
Connector Type	2 x 4.3-10 Female	2 x N Female	
Dimension (mm)	Ø130 x 200		
Weight (kgs)	1.2		
Radome Material	Fiber Glass (Grey)		
Operating Temperature (°C)	-40 to +65		
Mounting	Pole Mount		
Max wind velocity (Km/h)	210		
Wind Load (N) (@150km/h Wind Speed)	Frontal: 24.3   Lateral: 27.6   Rearside: 40.2		
Complaint to Environmental Standards	Dry Heat	GB/T 2423.2	(IEC 60068-2-2)
	Cold	GB/T 2423.1	(IEC 60068-2-1)
	Damp Heat	GB/T 2423.3	(IEC 60068-2-78)
	Change of Temperature	GB/T 2423.22	(IEC 60068-2-14)
	Salt Mist	GB/T 2423.17	(IEC 60068-2-11)
		GB/T 10125	(ISO 9227)
	Ingress Protection	GB/T 4208	(IEC 60529)
	Vibration	GB/T 2423.10	(IEC 60068-2-64)
	Drop Test	GB/T 2423.8 & 4857.5	(ISO 2248)



**74211037****Log Periodic Antenna  
3300-3800 15dBi**Log Periodic directional  
antenna X-Pol 2-port  
3300-3800 15dBi

Type	74211037		
Frequency Range (MHz)	3300-3800		
Gain (dBi, typ.)	15		
VSWR	≤ 1.5		
Polarization	±45°		
PIM3 (dBc), @2x43dBm	≤ -153		
Front-to-Back Ratio (dB)	≥ 20		
Isolation (dB)	≥ 20		
Horizontal Beamwidth (°)	33		
Vertical Beamwidth (°)	32		
Input Impedance (Ω)	50		
Max. Input Power (W)	200		
Lightning Protection	DC Grounded		
Connector Type	4 x 4.3-10 Female		
Dimension (mm)	Ø180 x 330		
Weight (kgs)	TBD		
Max wind velocity (Km/h)	200		
Wind Load (N) (@150km/h Wind Speed)	TBD		
Radome Material	Fiberglass, Gray (RAL7035)		
Reflector Material	Aluminum		
Operating Temperature (°C)	-40 to +65		
Mounting	Pole Mount		
Complaint to Environmental Standards	Dry Heat	GB/T 2423.2	(IEC 60068-2-2)
	Cold	GB/T 2423.1	(IEC 60068-2-1)
	Damp Heat	GB/T 2423.3	(IEC 60068-2-78)
	Change of Temperature	GB/T 2423.22	(IEC 60068-2-14)
	Salt Mist	GB/T 2423.17	(IEC 60068-2-11)
		GB/T 10125	(ISO 9227)
	Ingress Protection	GB/T 4208	(IEC 60529)
	Vibration	GB/T 2423.10	(IEC 60068-2-64)
	Drop Test	GB/T 2423.8 & 4857.5	(ISO 2248)

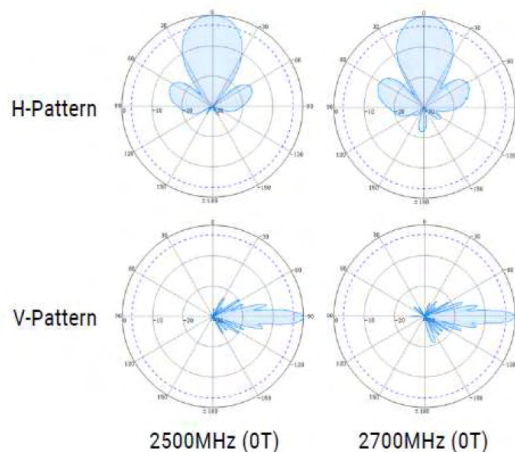


## 78712071 & 78712071/2

### Directional Antenna 2500-2700 19dBi

Directional antenna  
X-Pol 2-port 2500-2700  
19dBi 35° with fixed  
electrical D/T

Type	78712071	78712071/2
Frequency Range (MHz)	2500-2700	
Gain (dBi, typ.)	19	
VSWR	≤ 1.5	
Polarization	±45°	
PIM3 (dBc), @2x43dBm	≤ -153	
Front-to-Back Ratio (dB)	≥ 25	
Isolation (dB)	≥ 24	
Electrical Tilt (°)	0	2
Horizontal Beamwidth (°)	34	
Vertical Beamwidth (°)	7	
Input Impedance (Ω)	50	
Max. Input Power (W)	200	
Lightning Protection	DC Grounded	
Connector Type	2 x 4.3-10 Female	
Dimension (mm)	900 x 285 x 90	
Weight (kgs)	TBD	
Max wind velocity (Km/h)	210	
Wind Load (N) (@150km/h Wind Speed)	TBD	
Radome Material	UV-PVC	
Reflector Material	Aluminum	
Operating Temperature (°C)	-40 to +65	
Mounting	Adjustable D/T Clamp for Pole Size Ø50-Ø80 included	





# Smallcell antennas

---

The new 5G networks require a high consumption of small cells to provide more data capacity in densely populated areas. ESB offers different designs for each useful scenario focused on low weight, compact size and high performance.

Part Number	Description	Connector	MHz	Gain (dB)	Page
72432008	Log Periodic 698-960/1710-4000	N-F	1	8/9dBi	96
72412008	Log Periodic 698-960/1710-4000	4.3-10-F	1	8/9dBi	96
80011313v01	V-Pol Directional 698-2700	N-F	1	6/8dBi	97
80112751	X-Pol Directional 1710-2690/3300-4000	4.3-10-F	2	8dBi	98
80112752	X-Pol Directional 1710-2690/3300-4000	4.3-10-F	2	11dBi	99
80112754	XX-Pol Directional 698-4000	4.3-10-F	4	8/9dBi	100
80020449v01	Bi-directional 698-4000	4.3-10-F	1	5dB/6dB	101
80011847	Omni 698-4000	4.3-10-F	1	3dB	102
73410007	73410007 L-Bracket for antenna 80011847	N/A	N/A	N/A	103
70010015v01	Universal outdoor mounting bracket	N/A	N/A	N/A	104

# 724x2008

**Log Periodic**  
**698-960/1710-4000 8/9dBi**

Log Periodic Antenna  
V-Pol 1-port 8/9dBi  
698-960 / 1710-4000

Type	72412008 (4.3-10 Female)	72432008 (N Female)
Frequency (MHz)	698-960	1710-2700
Gain (dBi)	8	9
VSWR	≤ 2.0	≤ 1.5
Polarization	Vertical	
PIM3 (dBc, @2x43dBm)	≤ -150	
Front-to-Back Ratio (dB)	≥ 15	
Horizontal Beamwidth (°)	95	78
Vertical Beamwidth (°)	68	56
Input Impedance (ohm)	50	
Max. Input Power (W)	50	
Lightning Protection	DC Grounded	
Connector	1 x 4.3-10 Female	1 x N Female
Dimension (mm)	249 x 210 x 65	
Weight (kgs)	Approx. 0.87	
Reflector Material	Aluminum	
Radome Material	ABS (UV Stabilized)	
Operating Temperature (°C)	-40 to +65	
Mounting	Pole-mount Clamp for Pole Size Ø38 to Ø52 Included	



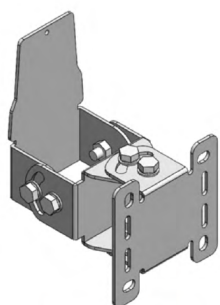


# 80011313v01

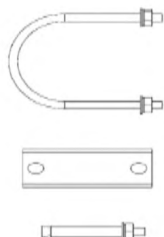
Outdoor Directional  
Panel Antenna  
V-Pol 1-port 7/9dBi  
698-960 / 1710-2700

**Panel outdoor**  
**698-960/1690-2700 7/9dBi**

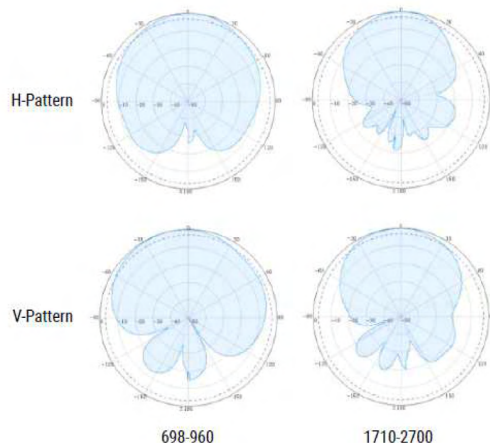
Type	80011313v01	
Frequency (MHz)	698-960	1690-2700
Gain (dBi)	6.5	9.0
VSWR	≤ 1.8	≤ 1.5
Polarization	Vertical	
PIM3 (dBc, @2x43dBm)	≤ -150	
Horizontal Beamwidth (°)	90	65
Vertical Beamwidth (°)	73	55
Input Impedance (ohm)	50	
Max. Input Power (W)	50	
Lightning Protection	DC Grounded	
Connector Type	N Female	
Dimension (mm)	168 x 158 x 50	
Weight (kgs)	Approx. 0.40	
Mounting	Standard fixed wall mount included *Optional Universal Bracket 70010015-V01 for wall or pole mount with universal tilt and swivel adjustment (pole size: 38-52mm)	
Reflector Material	Aluminum	
Ingress Protection	IP54 (outdoor)	
Radome Material	ABS (UV Stabilized)	
Operating Temperature (°C)	-40 to +65	



\*70010015v01(optional)



Standard fixed wall mount included



# 80112751

Directional Antenna  
 X-Pol 2-port 8dBi 65°  
 1710-2690 / 3300-4000  
 Fixed Electrical D/T (0T)

## XPol Directional 1710-2690/ 3300-4000 8dBi 0°T

Type	80112751	
Frequency Range (MHz)	1710-2690	3300-4000
Gain (dBi)	8	8
VSWR	≤ 1.5	
3rd Order PIM (dBc)	≤ -150 @ 2x43dBm	
Polarization	±45°	
Electrical Tilt (°)	0	
Horizontal Beamwidth (°)	65 ±5	65 ±5
Vertical Beamwidth (°)	60 ±5	60 ±5
Input Impedance (ohm)	50	
Max. Input Power (W)	100	
Front-to-Back Ratio (dB)	≥ 23	
Isolation (dB)	≥ 25	
Lightning Protection	DC Grounded	
Connector Type	2 x 4.3-10 Female	
Dimension (mm)	220 x 160 x 80	
Weight (kgs)	1.0	
Radome Material	UV-PVC	
Reflector Material	Aluminum	
Rated Wind Velocity (km/h)	210	
Operating Temperature (°C)	-40 to +70	
Mounting	Mechanical Adjustable Downtilt Clamp for Pole Diameter 38-52 included	



**80112752**

Directional Antenna  
 X-Pol 2-port 11dBi 65°  
 1710-2690 / 3300-4000  
 Fixed Electrical D/T (0T)

**XPol Directional**  
**1710-2690/ 3300-4000 11dBi 0°T**

Type	80112752	
Frequency Range (MHz)	1710-2690	3300-4000
Gain (dBi)	11	11
VSWR	≤ 1.5	
3rd Order PIM (dBc)	≤ -150 @ 2x43dBm	
Polarization	±45°	
Electrical Tilt (°)	0	
Horizontal Beamwidth (°)	65 ±5	65 ±5
Vertical Beamwidth (°)	30 ±5	30 ±5
Input Impedance (ohm)	50	
Max. Input Power (W)	100	
Front-to-Back Ratio (dB)	≥ 23	
Isolation (dB)	≥ 25	
Lightning Protection	DC Grounded	
Connector Type	2 x 4.3-10 Female	
Dimension (mm)	250 x 160 x 80	
Weight (kgs)	1.2	
Radome Material	UV-PVC	
Reflector Material	Aluminum	
Rated Wind Velocity (km/h)	210	
Operating Temperature (°C)	-40 to +70	
Mounting	Mechanical Adjustable Downtilt Clamp for Pole Diameter 38-52 included	



# 80112754

Directional Antenna  
XX-Pol 4-port 8/9dBi  
75°/65° 0T/0T

**XXPol Directional**  
**698-960/1710-2690/3300-4000 8/9dBi 0°T/0°T**

698-960 / 1710-2690 / 3300-4000

Type	80112754		
Port	Port 1 & 2	Port 3 & 4	
Frequency Range (MHz)	698-960	1710-2690	3300-4000
Gain (dBi)	8 ±0.5	9 ±0.5	9 ±0.5
VSWR	≤ 1.5		
3rd Order PIM (dBc)	≤ -150 @ 2x43dBm		
Polarization	±45°		
Electrical Tilt (°)	0		
Horizontal Beamwidth (°)	75	65	65
Vertical Beamwidth (°)	63	60	60
Input Impedance (ohm)	50		
Max. Input Power (W)	100 (per port)		
Front-to-Back Ratio (dB)	≥ 23		
Isolation (dB)	≥ 25		
Lightning Protection	DC Grounded		
Connector Type	4 x 4.3-10 Female		
Dimension (mm)	330 x 280 x 130		
Weight (kgs)	2.5		
Radome Material	UV-PVC		
Reflector Material	Aluminum		
Rated Wind Velocity (km/h)	210		
Operating Temperature (°C)	-40 to +65		
Mounting	Mechanical Adjustable Downtilt Clamp for Pole Diameter 38-52 included		

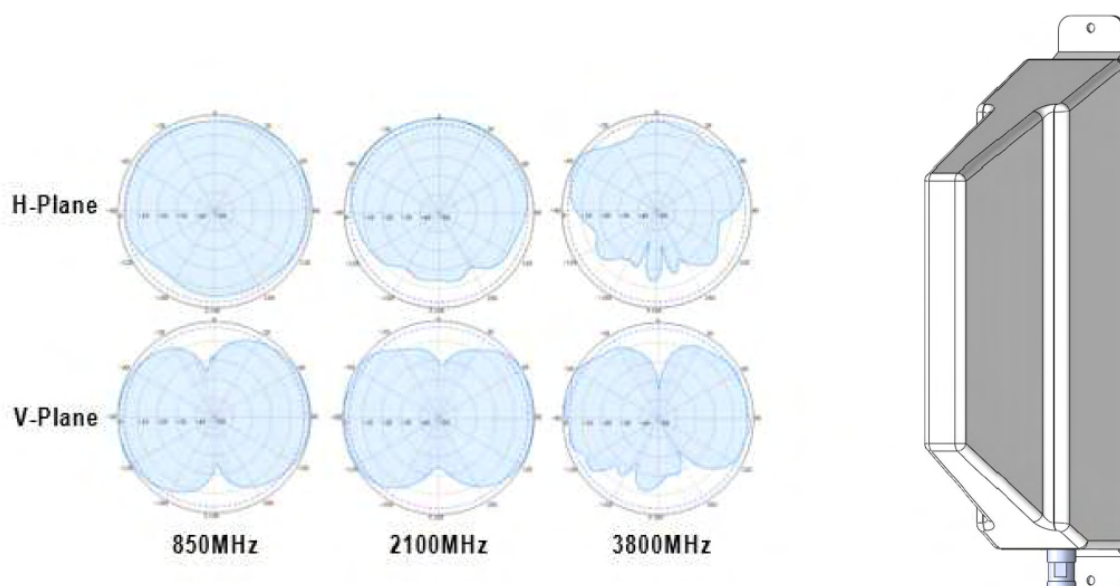


# 80020449v01

Outdoor Panel  
 Directional Antenna  
 VPol 1-port 5/6dBi -150dBc  
 Bi-directional 694-3800MHz

## V-Pol Bi-Directional 694-3800 5/6dBi

Type	80020449v01		
Frequency (MHz)	694-806	1710-2690	3300-4000
Gain (dBi)	5.0 ± 0.5	5.5 ± 0.5	6.0 ± 0.5
VSWR	≤ 2.0	≤ 1.8	≤ 2.0
Polarization	Vertical		
PIM3 (dBc, @2x43dBm)	≤ -150		
Horizontal Beamwidth (°)	90 ± 10	75 ± 10	58 ± 10
Vertical Beamwidth (°)	75	60	50
Input Impedance (ohm)	50		
Max. Input Power (W)	100		
Lightning Protection	DC Grounded		
Connector (at the bottom)	1 x 4.3-10 Female		
Dimension (mm)	400 x 190 x 82		
Weight (kgs)	Approx. 1.0		
Radome Material	ASA + PC (White, RAL 9003)		
Operating Temperature (°C)	-40 to +65		
Mounting	Mounting Clamp for Pole Size Ø38 to Ø52 Included		

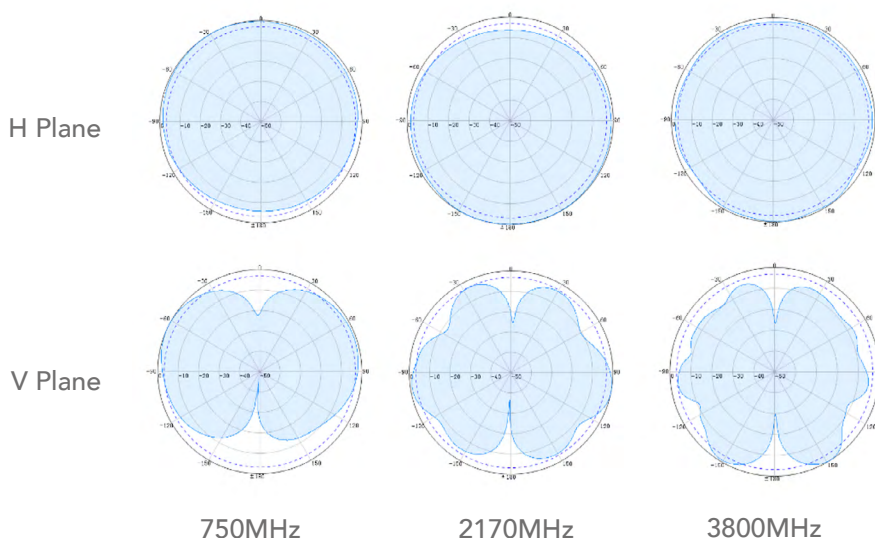


# 80011847

Outdoor Mini Omni Directional  
Antenna V-Pol  
1-port 3dBi  
698-960 / 1710-4000

## Outdoor Mini Omni 698-960/1710-4000 3dBi

Type	80011847				
Frequency (MHz)	698-806	806-960	1710-2170	2170-2700	3300-4000
Gain (dBi)	≥ 2.9	≥ 3.0	≥ 2.6	≥ 3.2	≥ 2.7
VSWR	≤ 2.5	≤ 2.5	≤ 3.0	≤ 2.5	≤ 1.5
Polarization	Vertical				
PIM3 (dBc, @2x43dBm)	≤ -150				
Horizontal Beamwidth (°)	360				
Vertical Beamwidth (°)	85	70	50	35	33
Input Impedance (ohm)	50				
Max. Input Power (W)	100				
Connector	1 x 4.3-10 Female				
Dimension (mm)	Ø30 x 200				
Weight (kgs)	Approx. 0.25				
Reflector Material	Aluminum				
Radome Material	Fiber Glass				
Operating Temperature (°C)	-40 to +65				
*Optional Mounting bracket	73410007 (order separately)				

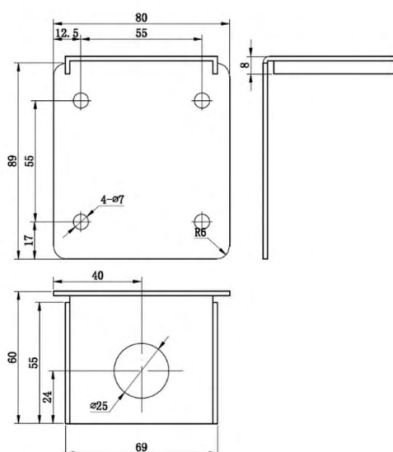


# 73410007

Mounting bracket  
for mini omni antenna 80011847  
Suitable for wall  
mount and pole mount

## Mount Bracket for Mini Omni Antenna

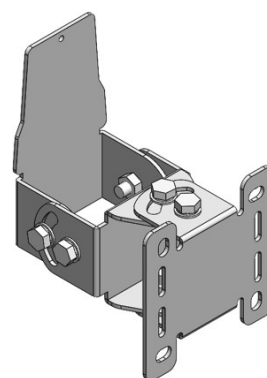
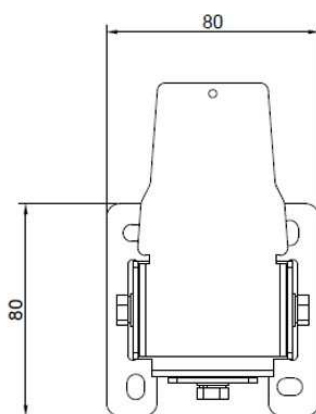
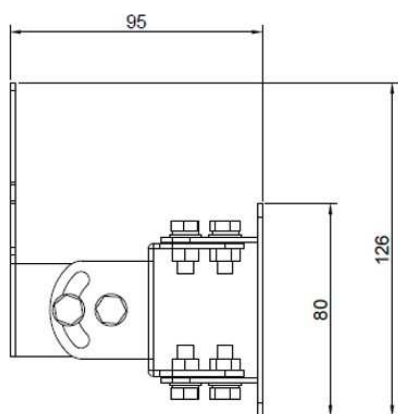
Type	73410007
Applicable Antenna Models	80011847
Installation Scenarios	<p><b>Pole Mount:</b> with two U-clamps provided for pole size 25 – 45mm</p> <p><b>Wall Mount:</b> fix through the four holes with screws (screws not included, screw type depends on wall material)</p>
Material	Stainless Steel (thk = 2mm)
Attaching of the Antenna	<ol style="list-style-type: none"> <li>1. Remove the fastening nut from the bottom of the antenna</li> <li>2. Insert the antenna through the centre hole of the bracket</li> <li>3. Tighten the fastening nut from the bottom</li> <li>4. Apply thread adhesive or sealant when necessary for better results</li> <li>5. Attach the signal cable to the bottom connector of the antenna</li> <li>6. Only attach the antenna to the bracket after the bracket is fixed on the wall/ pole</li> </ol>
Dimensions (mm)	89 x 80 x 60



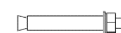
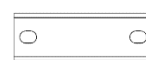
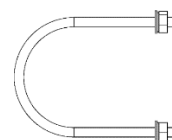
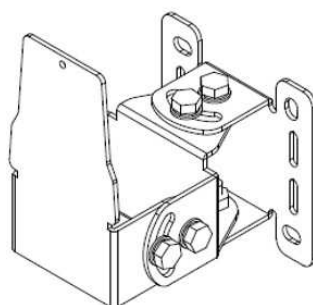
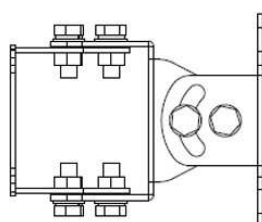
# 70010015v01

Universal Mounting Bracket  
 For 1-port / 2-port / 4-port  
 Small Panel Antenna  
 Horizontal and Vertical Adjustments

Type	70010015v01
Application	For mounting 1-port, 2-port, or 4-port small panel antennas Suitable for wall mount and pole mount
Material	2.0mm Stainless Steel
Tilt Adjustment	Up to 45° (Both horizontal and vertical, depending on antenna size.)
Mounting (Included in the Packing)	Wall mount: secure the bracket with expansion bolts supplied. Pole mount: attach the bracket to the pole with the U-clamps supplied. Insert the antenna on the flap of the bracket and secure M3 screw on the flap. Adjustment to desire horizontal / vertical angle.
Size (reference only)	126 x 80 x 95mm
Accessories Included	M6 x 60mm Expansion Bolts x 4 (Wall Mount) U-Clamps x 2 (Pole Size: Ø38-52mm) M3 x 6mm Allen Screw x 1



Universal Bracket 70010015V01:



Accessories included





# Multiband combiners

---

Multiband combiners are used to isolate two or more channels on different frequencies, thus allowing the common use of one antenna by several transmitters or receivers. Very low insertion loss, excellent signal isolation and superior intermodulation properties prevent mutual interference between adjacent systems. All diplexers, triplexers and quadruplexers, pentaplexers and hexaplexers are suited for indoor and outdoor installation. ESB designs and manufactures combiners under strict quality control with VSWR and PIM values in line with today's demanding 5G networks. Both versions (single and dual) are available with mainly 4.3-10 connectors but also N female connector.

Part Number	Description	Page
78210264	DBC 50-2200 / 2400-2500Mhz Nf SU	108
78321001	DBC 698-2700/3300-4000MHz 4.3-10 SU	110
78322001	DBC 698-2700/3300-4000MHz 4.3-10 DU	110
78331004	TBC 703-788 / 791-862 / 880-960MHz 4.3-10 SU	112
78332004	TBC 703-788 / 791-862 / 880-960MHz 4.3-10 DU	112
78331002	TBC 690-960/1710-2700/3300-3800MHz 4.3-10 SU	114
78332002	TBC 600-960/1710-2700/3300-3800MHz 4.3-10 DU	114
78331003	TBC 703-788/791-960/1427-3800MHz 4.3-10 SU	116
78332003	TBC 703-788/791-960/1427-3800MHz 4.3-10 DU	116
78341001	QBC 1695-1880/1920-2200/2300-2700/3300-3800MHz 4.3-10 SU	118
78342001	QBC 1695-1880/1920-2200/2300-2700/3300-3800MHz 4.3-10 DU	118
78341002	703-788 / 791-862 / 880-960 / 1710-2170MHz 4.3-10 SU	120
78342002	703-788 / 791-862 / 880-960 / 1710-2170MHz 4.3-10 DU	120
78351001	PBC 690-862/880-960/1710-1880/1920-2170/2490-2690MHz 4.3-10 SU	122
78352001	PBC 690-862/880-960/1710-1880/1920-2170/2490-2690MHz 4.3-10 DU	122
78351002	PBC 690-960/1710-1880/1920-2170/2500-2700/3300-3800MHz 4.3-10 SU	124
78352002	PBC 690-960/1710-1880/1920-2170/2500-2700/3300-3800MHz 4.3-10 DU	124
78361001	HBC 600-960/1695-1880/1920-2200/2300-2400/2500-2690/3300-3800MHz 4.3-10 SU	126
78362001	HBC 600-960/1695-1880/1920-2200/2300-2400/2500-2690/3300-3800MHz 4.3-10 DU	126

# 78210264

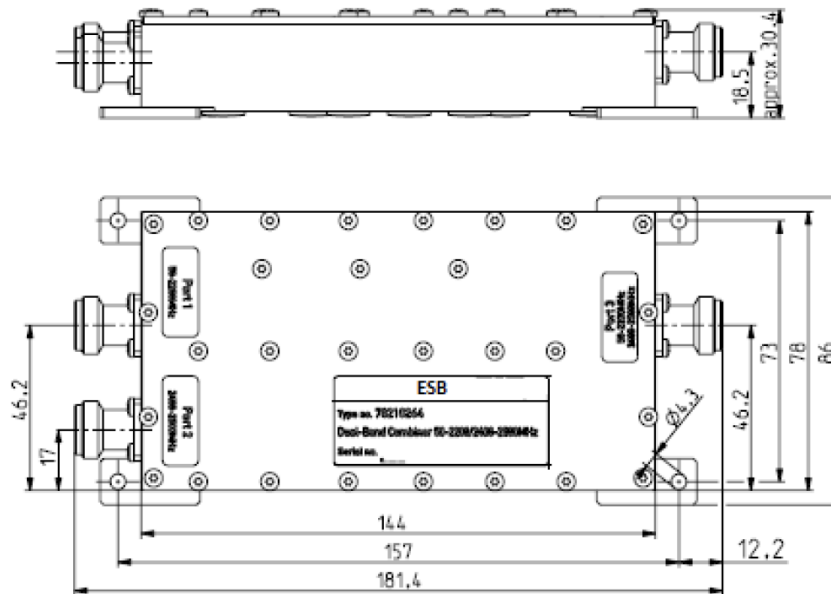
## Dual Band Combiner 50-2200 / 2400-2500Mhz

Dual Band Combiner  
50-2200 / 2400-2500

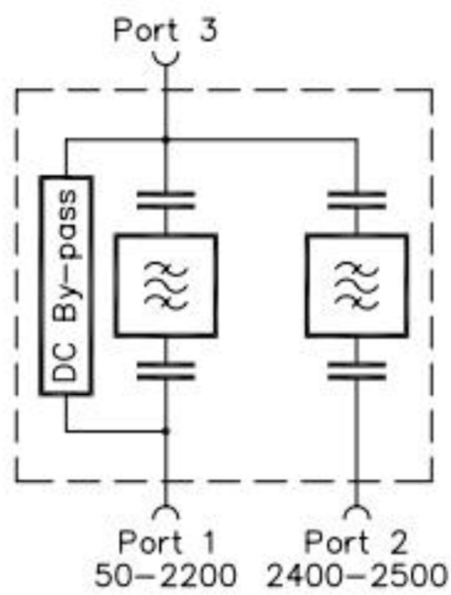
Type	78210264 Single Unit
Frequency (MHz) Band 1 Band 2	50-2200 2400-2500
Insertion Loss (dB)	Port1-3: < 0.1 dB (50 – 2200 MHz) Port2-3: < 0.2 dB (2400 – 2500 MHz)
Isolation (dB)	≥ 50
PIM3 (dBc, @2x43dBm)	≤ -150
VSWR	< 1.25 (50 – 2200 / 2400 – 2500 MHz)
Input Impedance (ohm)	50
Max. Input Power (W)	200 per Port
DC/AISG transparency Port 1 ↔ Port 3 Port 2 ↔ Port 3	DC By-pass (max 2500mA) Built-in DC Stop
Connectors	N Female
Dimension (mm)*	86 mm x 30.4 mm x 181.4 mm (including connectors and mounting feet)
Weight (kgs)	Approx 0.5
Ingress Protection Class	Indoor
Operational RH (%)	≤ 95
Operating Temperature (°C)	-30 to +60
Storage Temperature (°C)	-40 to +85



## Dimensions



## Block Diagram



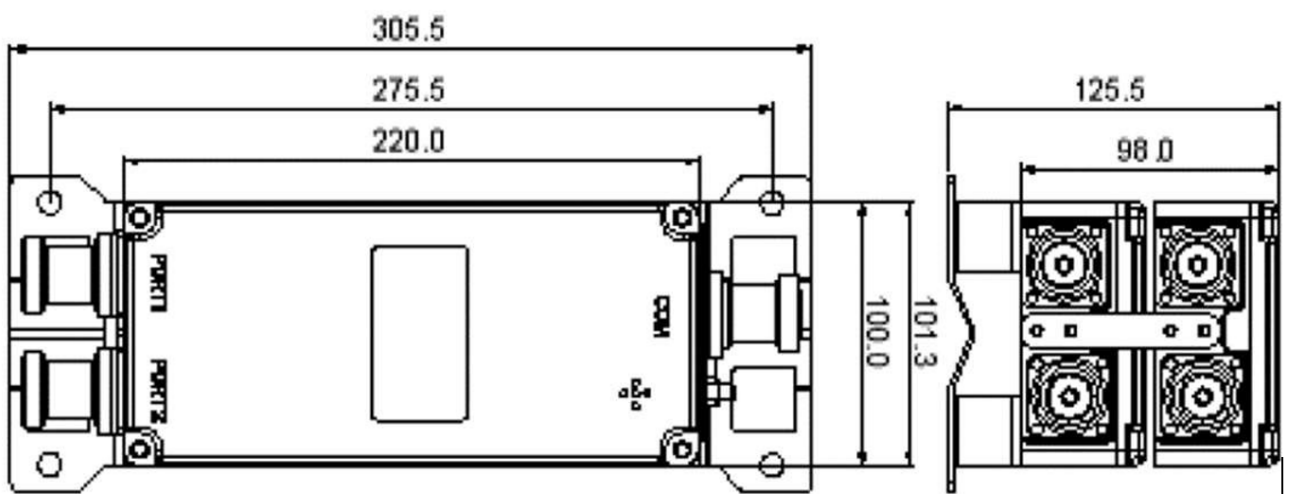
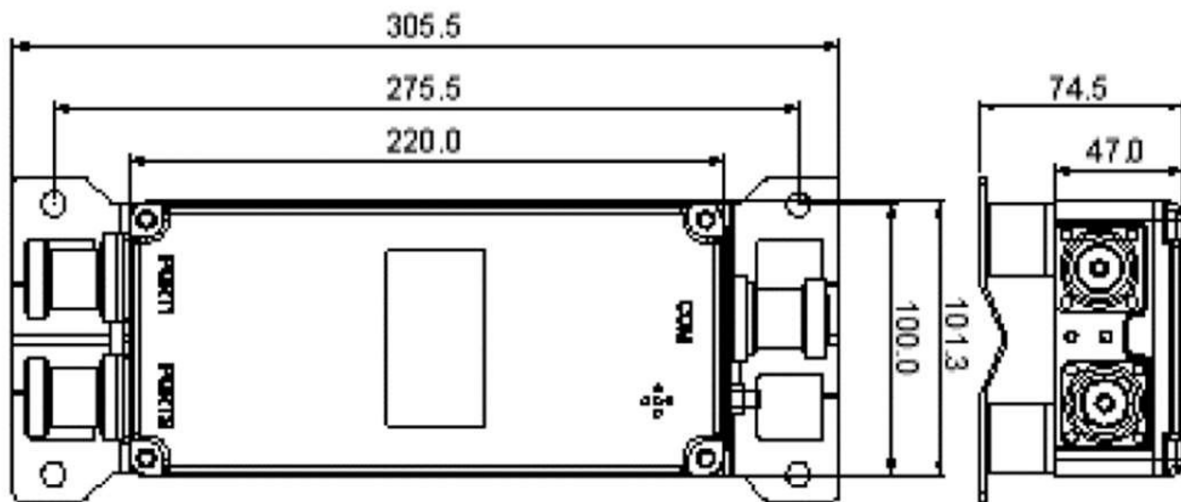
# 7832x001

## Dual Band Combiner 690-2700 / 3300-4000

Dual Band Combiner  
690-2700 / 3300-4000

Type	78321001 Single Unit	78322001 Double Unit
Frequency (MHz) Band 1 Band 2	690-2700 3300-4000	
Insertion Loss (dB)	≤ 0.5	
Isolation (dB)	≥ 95	
PIM3 (dBc, @2x43dBm)	≤ -160	
Return Loss (dB)	≥ 19	
Input Impedance (ohm)	50	
Max. Input Power (W)	200 per Port	
ASIG/DC By-pass	Bypass at Band 1 (690-2700)	Stop at Band 2 (3300-4000)
Connectors	4.3-10 Female	
Dimension (mm)*	220 x 100 x 47	222.5 x 204 x 160
Weight (kgs)	1.2	2.4
Ingress Protection Class	IP67	
Operational RH (%)	≤ 95	
Operating Temperature (°C)	-30 to +60	
Storage Temperature (°C)	-40 to +85	
Lightning Protection	10kA@8/20µS	
Mounting	Wall Mount or Pole Mount (Pole Size: Ø35-125mm)	

## Dimensions



# 7833x004

## Triple Band Combiner 703-788 / 791-862 / 880-960

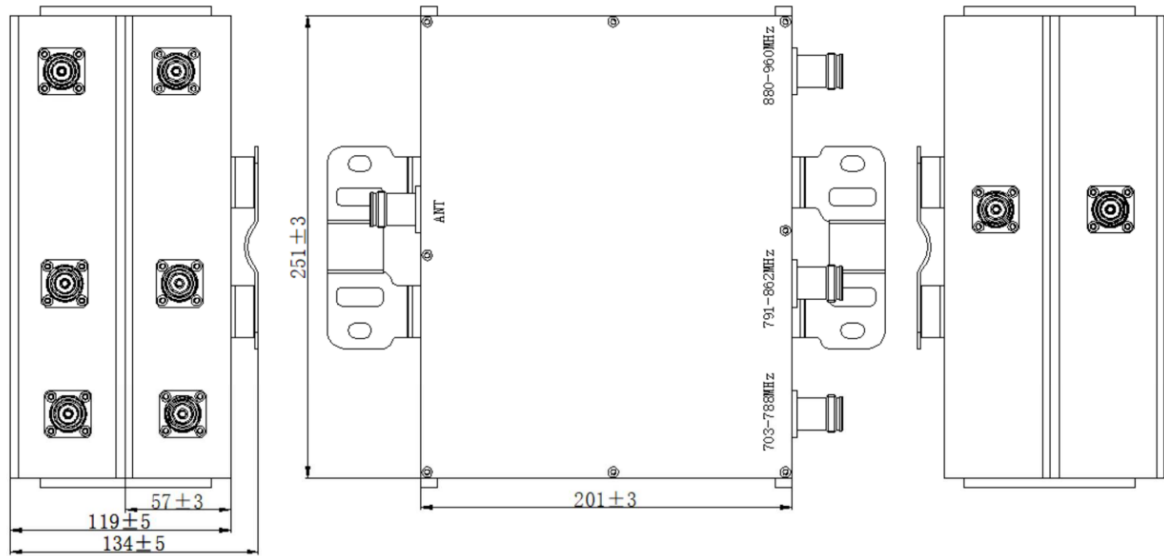
Triple Band Combiner  
703-788 / 791-862 / 880-960

Type	78331004 Single Unit	78332004 Double Unit
Frequency (MHz) Band 1 Band 2 Band 3	703-788 791-862 880-960	
Insertion Loss (dB)	Port 1: $\leq 0.5$ dB (703-780)/ $\leq 1.0$ (780-787)/ $\leq 1.5$ (787-788) Port 2: $\leq 1.5$ dB (791-792)/ $\leq 1.0$ (792-794)/ $\leq 0.5$ (794-862) Port 3: $\leq 0.5$ (880-960)	
Isolation (dB)	$\geq 40$	
PIM3 (dBc, @2x43dBm)	$\leq -160$	
VSWR	$\leq 1.25$	
Input Impedance (ohm)	50	
Max. Input Power (W)	200 per Port	
ASIG/DC By-pass	Bypass at All Ports	
Connectors	4.3-10 Female	
Dimension (mm)*	TBD	TBD
Weight (kgs)	TBD	TBD
Ingress Protection Class	IP66	
Operational RH (%)	$\leq 95$	
Operating Temperature (°C)	-40 to +65	
Storage Temperature (°C)	-50 to +85	
Barometric Pressure (kPa)	TBD	
Mounting	Wall Mount or Pole Mount (Pole Size: Ø35-125mm)	

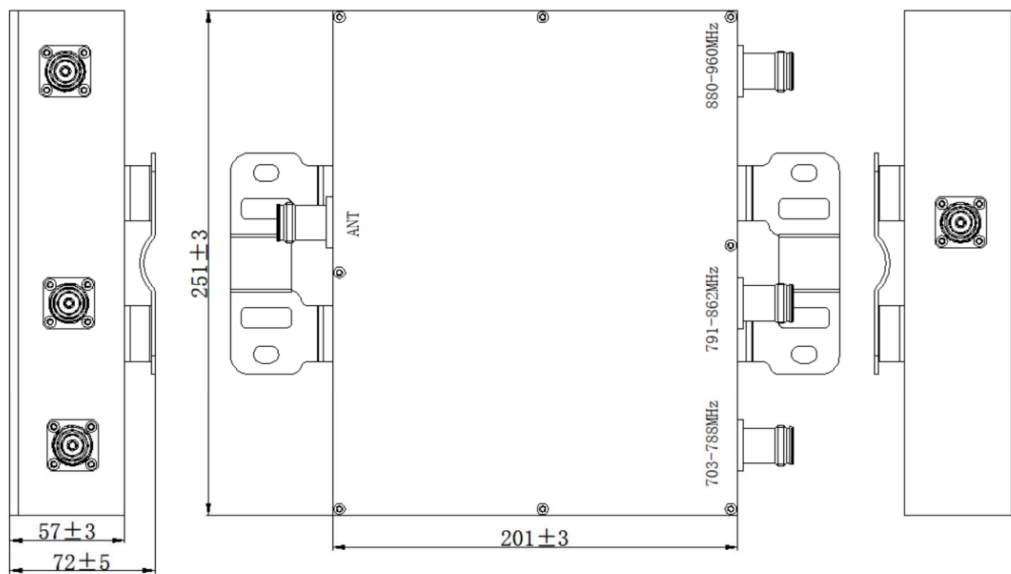


## Dimensions

### Double unit 78332004



### Single unit 78331004



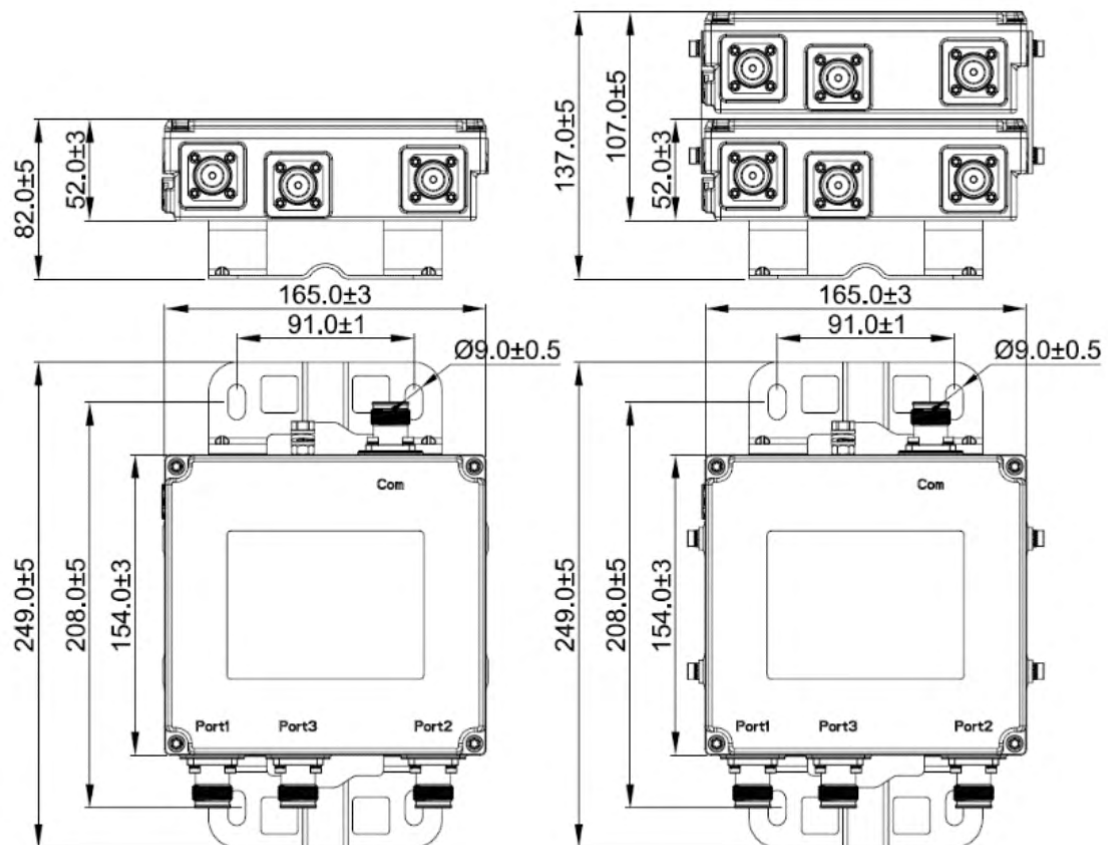
# 7833x002

## Triple Band Combiner 600-960 / 1710-2700 / 3300-3800

Triple Band Combiner  
600-960 / 1710-2700 / 3300-3800

Type	78331002 Single Unit	78332002 Double Unit
Frequency (MHz)		
Band 1	600-960	
Band 2	1710-2700	
Band 3	3300-3800	
Insertion Loss (dB)	≤ 0.5	
Isolation (dB)	> 70	
PIM3 (dBc, @2x43dBm)	≤ -160 (690-2700) ≤ 155 (3300-3800)	
VSWR	≥ 20	
Input Impedance (ohm)	50	
Max. Input Power (W)	250 per Port	
ASIG/DC By-pass	Bypass at All Ports	
Connectors	4.3-10 Female	
Dimension (mm)*	165 x 154 x 52	165 x 154 x 107
Weight (kgs)	2.2	4.4
Ingress Protection Class	IP67	
Operational RH (%)	≤ 95	
Operating Temperature (°C)	-40 to +65	
Lightning Protection	IEC 61000-4-5: 3kA @ 10/350µs / 10kA @ 8/20µs	
Storage Temperature (°C)	-50 to +85	
Barometric Pressure (kPa)	10kA@8/20µS	
Mounting	Wall Mount or Pole Mount (Pole Size: Ø35-125mm)	

## Dimensions



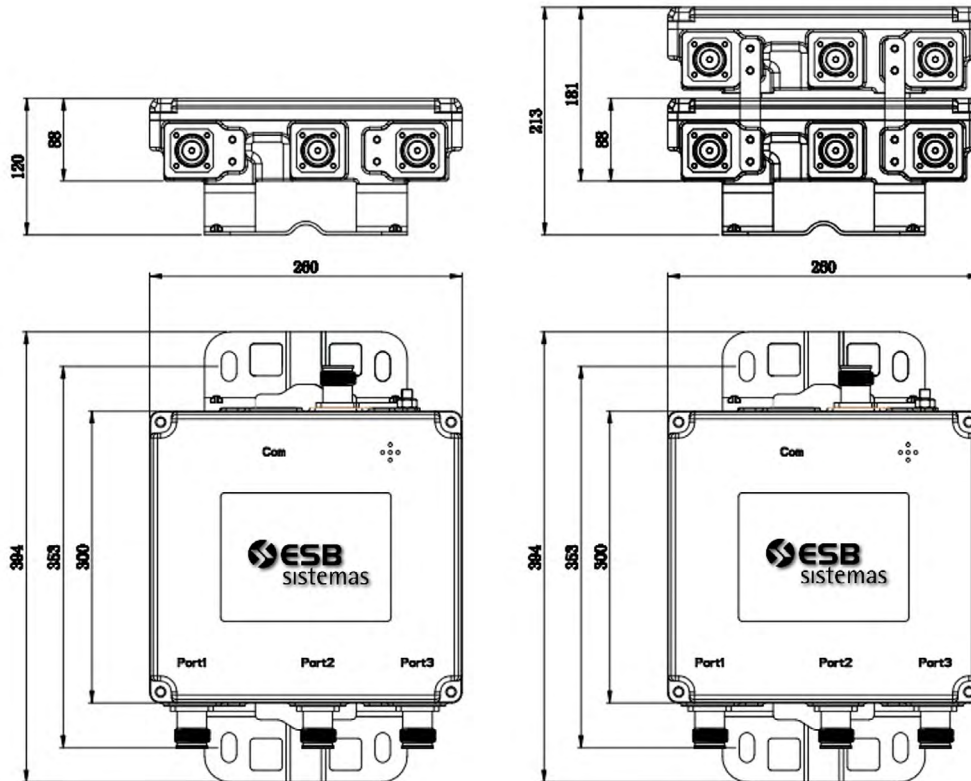
# 7833x003

## Triple Band Combiner 703-788 / 791-960 / 1427-3800

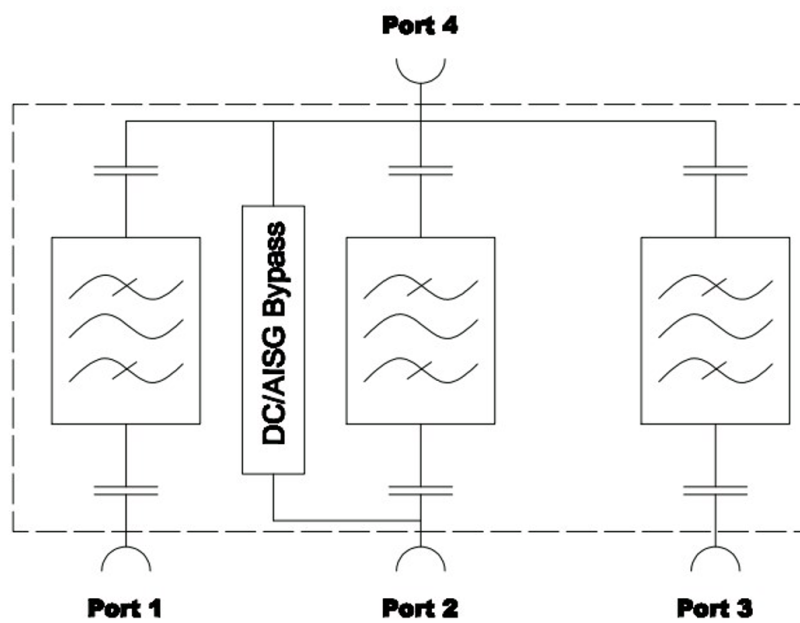
Triple Band Combiner  
703-788 / 791-960 / 1427-3800

Type	78331003 Single Unit	78332003 Double Unit
Frequency (MHz) Port 1 Port 2 Port 3	703-788 791-960 1427-3800	
Insertion Loss (dB)	Port 1: $\leq 0.7$ (703-785) / $\leq 1.0$ (785-787) / $\leq 1.5$ (787-788) Port 2: $\leq 1.5$ (791-792) / $\leq 1.0$ (792-800) / $\leq 0.7$ (800-960) Port 3: $\leq 0.3$ (1427-3800)	
Isolation (dB)	$\geq 40$	
PIM3 (dBc, @2x43dBm)	$\leq -160$	
VSWR	$\leq 1.25$	
Input Impedance (ohm)	50	
Max. Input Power (W)	Port 1: 200 Port 2: 200 Port 3: 200 (1427-2700) / 100 (2700-3800)	
ASIG/DC By-pass	Bypass at Port 2 (Max. 2500mA)	
Connectors	4.3-10 Female	
Dimension (mm)*	260 x 300 x 88	260 x 300 x 181
Weight (kgs)	6.2	12
Ingress Protection Class	IP66	
Operational RH (%)	$\leq 95$	
Operating Temperature (°C)	-40 to +60	
Storage Temperature (°C)	-40 to +85	
Barometric Pressure (kPa)	55 to 106	
Mounting	Wall Mount	

## Dimensions



## Block Diagram



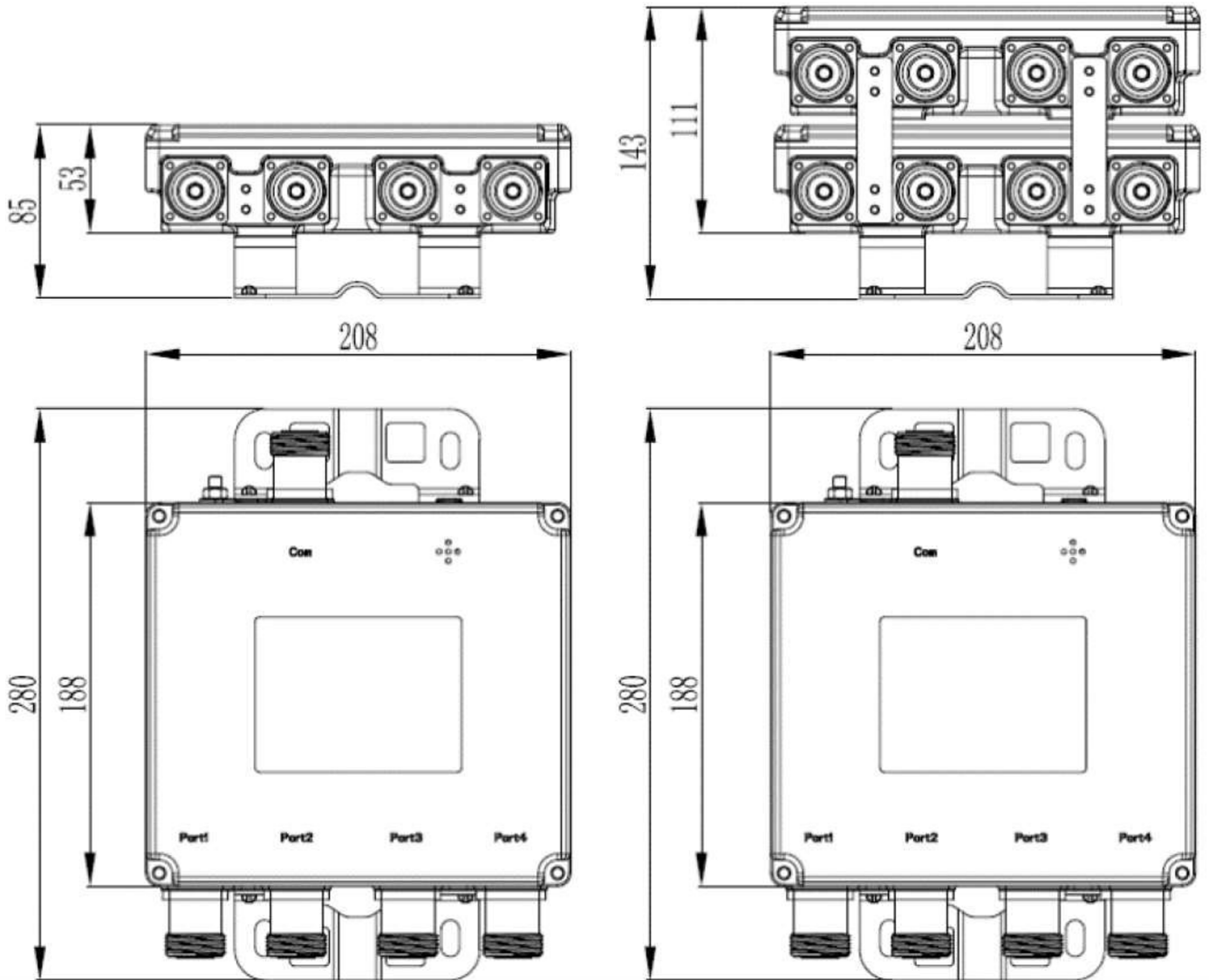
# 7834x001

**Quad Band Combiner**  
**1695-1880 / 1920-2200 / 2300-2700 /**  
**3300-3800**

Quad Band Combiner  
 1695-1880 / 1920-2200 / 2300-  
 2700 / 3300-3800

Type	78341001 Single Unit	78342001 Double Unit
Frequency (MHz)		
Band 1	1695-1880	
Band 2	1920-2200	
Band 3	2300-2700	
Band 4	3300-3800	
Insertion Loss (dB)	≤ 0.3	
Isolation (dB)	> 50	
PIM3 (dBc, @2x43dBm)	≤ -160	
Return Loss (dB)	≥ 20	
Input Impedance (ohm)	50	
Max. Input Power (W)	250 per Port	
ASIG/DC By-pass	Bypass at All Ports	
Connectors	4.3-10 Female	
Dimension (mm)*	208 x 188 x 53	208 x 188 x 111
Weight (kgs)	2.7	5.5
Ingress Protection Class	IP67	
Operational RH (%)	≤ 95	
Operating Temperature (°C)	-40 to +65	
Storage Temperature (°C)	-50 to +85	
Barometric Pressure (kPa)	10kA@8/20µS	
Mounting	Wall Mount or Pole Mount (Pole Size: Ø35-125mm)	

## Dimensions



# 7834x002

## Quad Band Combiner 703-788 / 791-862 / 880-960 / 1710-2170

Quad Band Combiner  
703-788 / 791-862  
880-960 / 1710-2170

Type	78341002 Single Unit	78342002 Double Unit
Frequency (MHz) Band 1 Band 2 Band 3 Band 4	703-788 791-862 880-960 1710-2170	
Insertion Loss (dB)	≤ 0.6 typ. 1.8 max@703-862MHz, ≤0.6@880 - 960MHz, ≤0.4@1710-2690MHz	
Isolation (dB)	Band 1/2/3 > 40 Band 4 >50	
PIM3 (dBc, @2x43dBm)	≤ -160	
Return Loss (dB)	≥ 19	
Input Impedance (ohm)	50	
Max. Input Power (W)	200 per Port	
ASIG/DC By-pass	Bypass at All Ports	
Connectors	4.3-10 Female	
Dimension (mm)*	253 x 206 x 63	253 x 206 x 131
Weight (kgs)	4.2	8.5
Ingress Protection Class	IP67	
Operational RH (%)	≤ 95	
Operating Temperature (°C)	-40 to +65	
Storage Temperature (°C)	-50 to +85	
Barometric Pressure (kPa)	5kA; 8/20 μs pulse	
Mounting	Wall Mount or Pole Mount (Pole Size: Ø35-125mm)	
Color	Light grey	



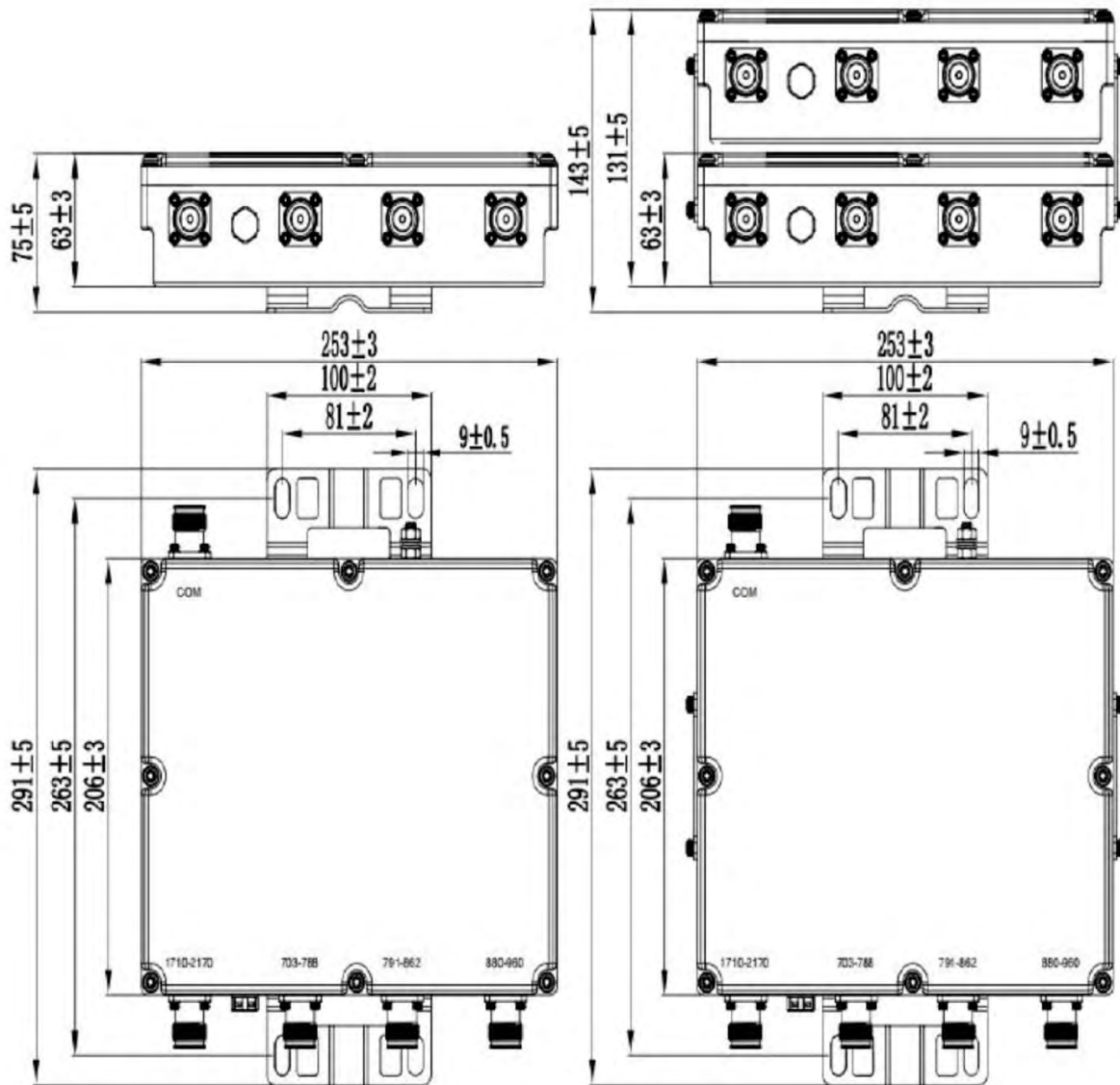
Single Unit



Double Unit



## Dimensions



# 7835x001

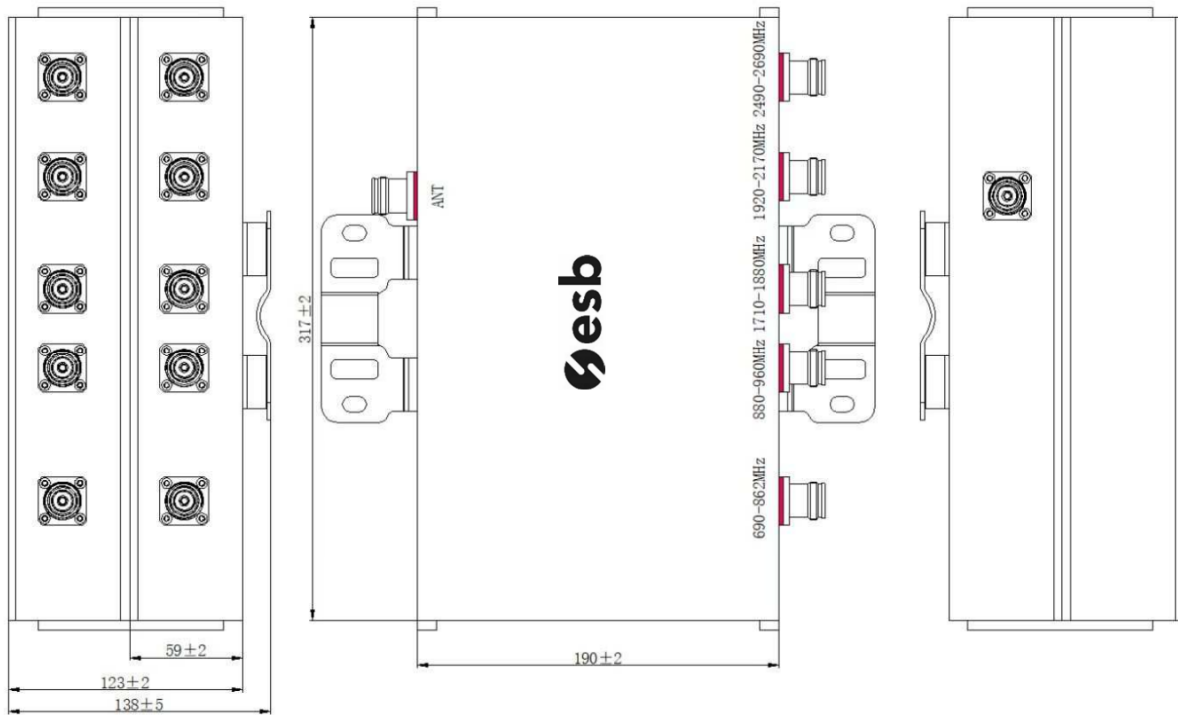
## Penta Band Combiner

Penta-Band Combiner  
690-862 / 880-960 / 1710-1880 /  
1920-2170 / 2490-2690

Designed for co-siting purposes | Can be used at the BTS side or the antenna side  
Suitable for indoor and outdoor applications | Built-in lightning protection | Wall or pole mounting

Type	78351001 Single Unit	78352001 Double Unit
Frequency (MHz)		
Band 1	690-862	
Band 2	880-960	
Band 3	1710-1880	
Band 4	1920-2170	
Band 5	2490-2690	
Insertion Loss (dB)	≤ 0.5	
Isolation (dB)	≥ 50	
PIM3 (dBc, @2x43dBm)	≤ -155	
Input Impedance (ohm)	50	
Power Average (W)	150	
Return Loss	≥18dB	
Max. Input Power (W)	200W	
Peak Power (W)	1000W	
ASIG/DC By-pass	All ports	
Colour	Cool grey	
Connectors	4.3-10F	
Dimension (mm)*	317 x 190 x 59	317 x 190 x 123
Weight (kgs)	5kg	10kg
Ingress Protection Class	IP65	
Operational RH (%)	≤ 95	
Operating Temperature (°C)	-20 to +65	

## Dimensions



# 7835x002

Penta-Band Combiner  
690-960/1710-1880/1920-  
2170/2500-2700/3300-3800MHz

## Penta Band Combiner

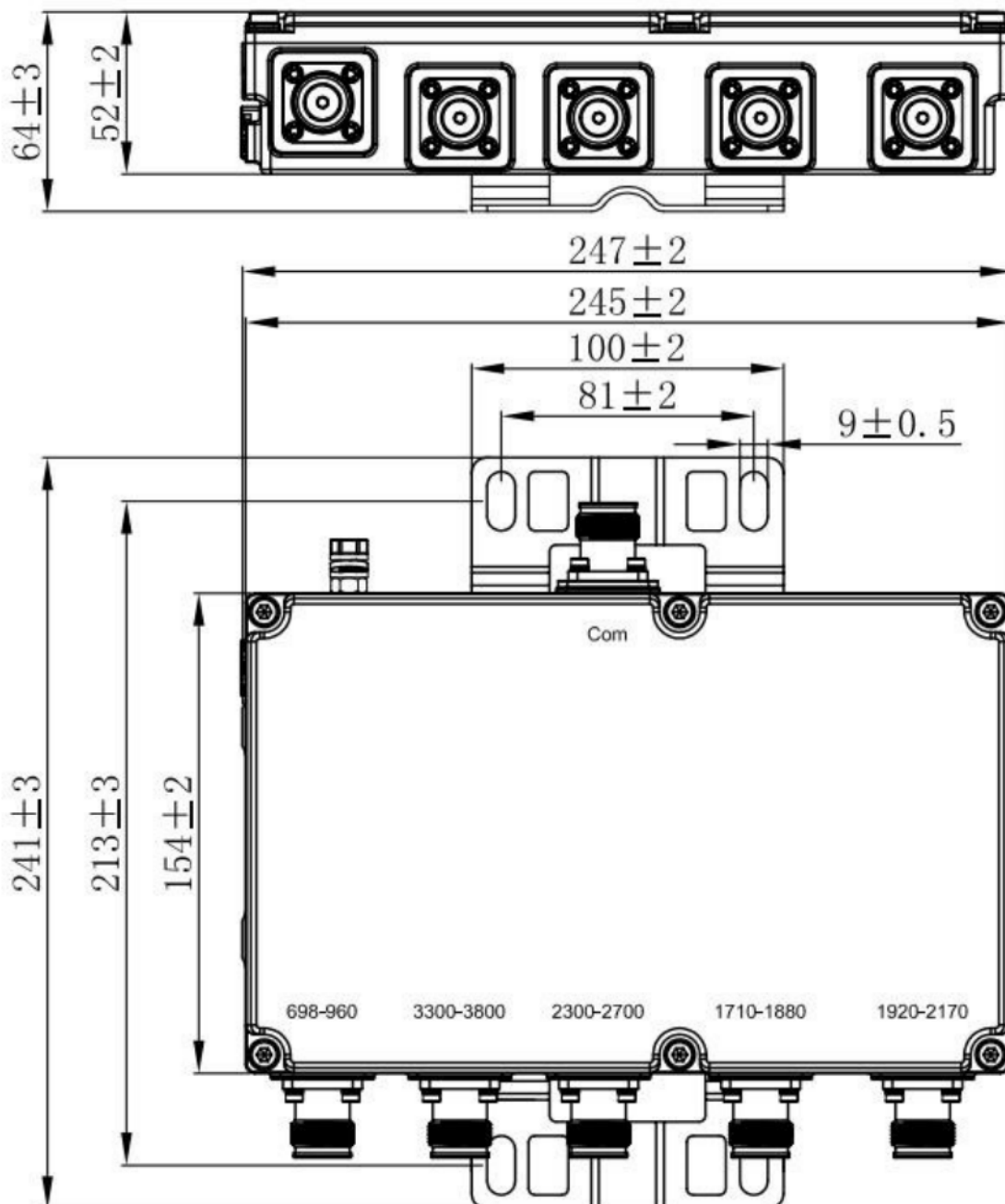
Type	78351002 Single Unit	78352002 Double Unit
Frequency (MHz)		
Band 1	690-960	
Band 2	1710-1880	
Band 3	1920-2170	
Band 4	2500-2700	
Band 5	3300-3800	
Insertion Loss (dB)	≤ 0.5	
Isolation (dB)	≥ 50	
PIM3 (dBc, @2x43dBm)	≤ -160	
Input Impedance (ohm)	50	
Power Average (W)	150	
Return Loss	≥18dB	
Max. Input Power (W)	≤ 500W	
Peak Power (W)	≤ 2000W	
ASIG/DC By-pass	All ports	
Colour	Cool grey	
Connectors	4.3-10F	
Dimension (mm)*	245 x 154 x 52	245 x 104 x 104
Weight (kgs)	3kg	6kg
Ingress Protection Class	IP65	
Operational RH (%)	≤ 95	
Operating Temperature (°C)	-20 to +65	

### Accessories(order separately)

Type no.	Description
734365	Hose clamp



## Dimensions



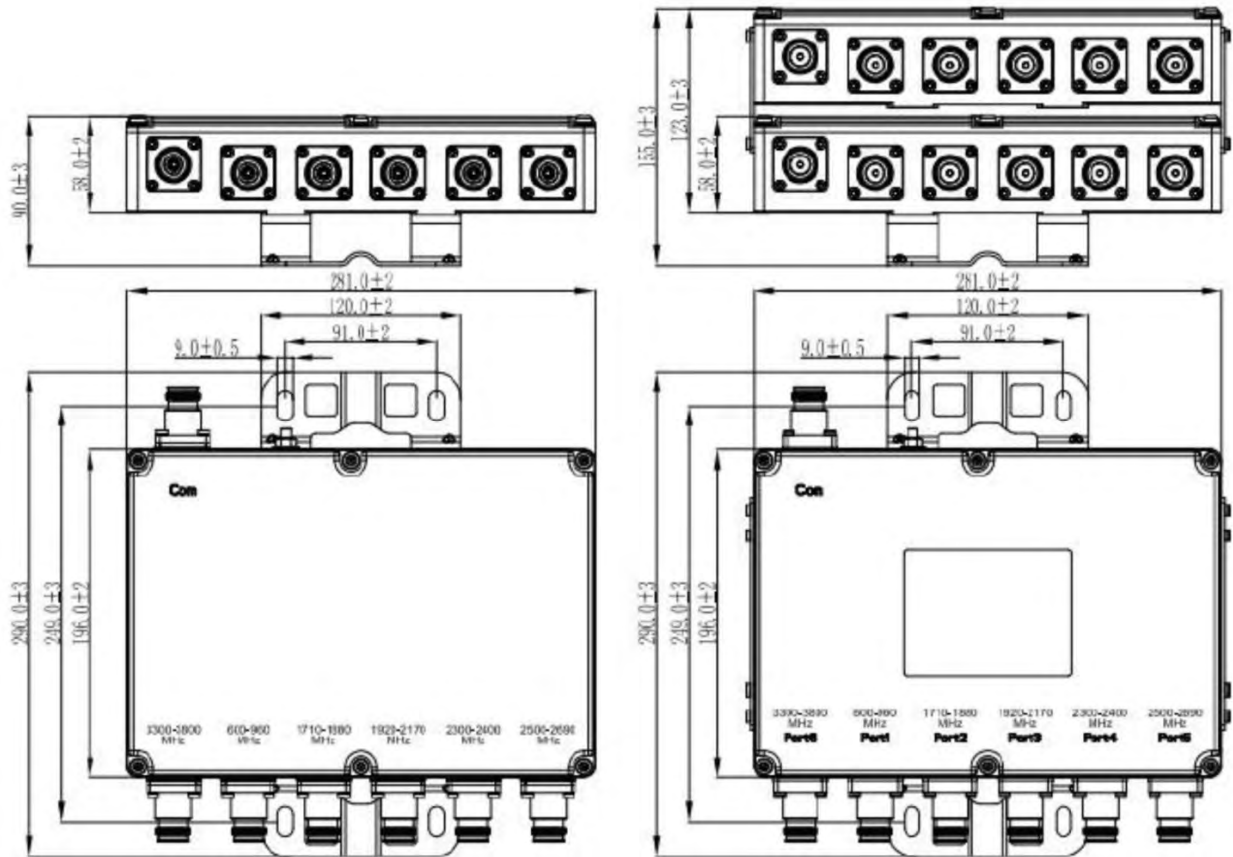
# 7836x001

Hexa-Band Combiner  
 600-960 / 1695-1880 / 1920-2200/  
 2300-2400 / 2500-2690 / 3300-3800

## Hexa-Band Combiner

Type	78361001 Single Unit	78362001 Double Unit
Frequency (MHz)		
Band 1	600-960	
Band 2	1695-1880	
Band 3	1920-2200	
Band 4	2300-2400	
Band 5	2500-2690	
Band 6	3300-3800	
Insertion Loss (dB)	≤ 0.5	
Isolation (dB)	≥ 50	
PIM3 (dBc, @2x43dBm)	≤ -160	
Return Loss (dB)	≥ 19	
Input Impedance (ohm)	50	
Max. Input Power (W)	300	
Peak Power (W)	2,000	
ASIG/DC By-pass	NA	
Connectors	4.3-10F	
Dimension (mm)	281 x 196 x 58	281 x 196 x 123
Weight (kgs)	4.4	8.5
Ingress Protection Class	IP66	
Operational RH (%)	≤ 95	
Operating Temperature (°C)	-10 to +65	

## Dimensions





Shaping the  
connected world