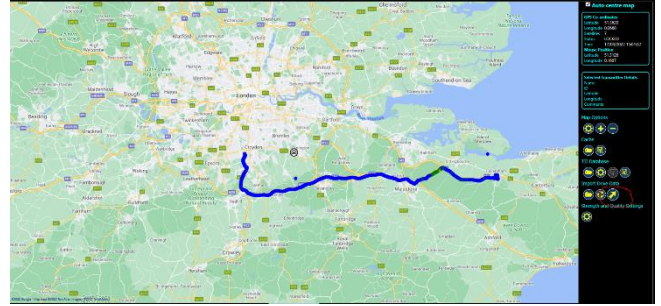


OBSERVA FIELD MONITOR

RF receiver for DAB+ decoding and analysis



The OBSERVA Field Monitor is a portable instrument for RF surveys to verify DAB content and signal coverage.

The device captures comprehensive RF measurements which can be recorded in a variety of formats for detailed analysis. The device has several applications to suit the need of the operator:

Coverage planning	RF signal performance	Transmitter synchronisation checks	DAB content verification	Reception quality
-------------------	-----------------------	------------------------------------	--------------------------	-------------------

The OBSERVA Field Monitor provides real-time analysis of:

- DAB (+) ensemble, including audio and data services (**DLS, Slideshow, SPI**).
- RF transmission reception quality by **signal level and field strength**, plotted against a map overlay using accurate **GPS** information during drive surveys.
- Real-time data displays, including graphing of the **Bit Error Rate (BER)** in the Fast Information Channel (FIC), **Phase Reference Symbol (PRS)** display and the **Channel Impulse Response (CIR)**.

CONTENTS

- Receiver unit with internal **GPS** receiver and licence key
- RF antenna and **GPS** antenna with magnetic mount, RF antenna cable and antenna rod
- **USB** power cable
- Software installer, licence file, user guide and release notes

TECHNICAL SPECIFICATIONS

Operating System	CPU	Memory	Storage
Windows 10 Pro	Intel Core i5 processor - 2GHz or faster	8GB RAM	2GB free disk capacity for installation

FEATURES

- RF modulation presented in graphical forms
- Full ensemble decoding including **FIGs**, and detailed DAB service analysis
- **GPS** logging with map overlay and coverage data export/import functionality
- Transmitter Identifier Information (**TII**) detection
- Service Linking data
- Save to file options: **ETI, Sub-channel, PAD, Audio (PCM or WAV), KMZ**