

> Panel Antenna

960–1215 MHz

V

- DME antenna.
- 4 dipole panel protected by fiberglass radome.
- Includes radiation monitoring system.

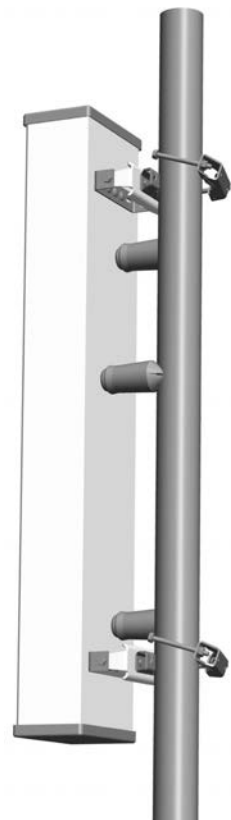
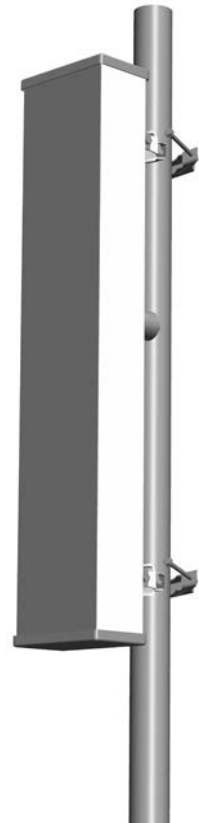
Order No.	716405	88010003
Inputs (antenna and monitoring probes)	N female	
Connector positions	Rearside	
Frequency range	960–1215 MHz	
VSWR	< 1.6	
Gain	14 dBd	
Impedance	50 Ω	
Coupling attenuation (antenna/monitoring probes)	25 ± 3 dB	20 ± 3 dB
Beam tilt	+4° ± 0.5°	
R. F. peak power	10 kW; duty cycle 2%	
Polarization	Vertical	
Temperature range	–40 °C to +60 °C ambient	
Height/width/depth	1305/255/150 mm	
Packing size	1420 × 360 × 250 mm	
Weight	12 kg	
Wind load (at 160 km/h)	Frontal: 675 N, Lateral: 350 N, Rearside: 650 N	
Max. wind velocity	200 km/h (incl. 1,5 cm radial ice)	

Material: Radiators: Brass. Reflector screen: High strength aluminum alloy sheet. Cover: Fiberglass. Clamps: Hot dip galvanized steel. All screws and nuts: Stainless steel

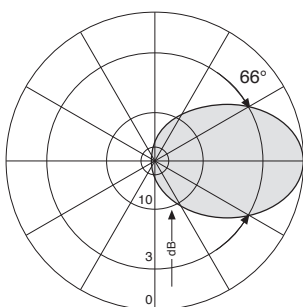
Mounting: To pipes of 42–115 mm OD by means of mounting clamps, supplied.

Grounding: The antenna is DC grounded via mounting clamps. The inner conductors are also DC grounded.

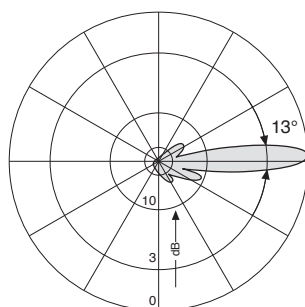
Scope of supply: Antenna including clamps and three weather protective rubber caps for the connectors.



Radiation Pattern (at mid-band)

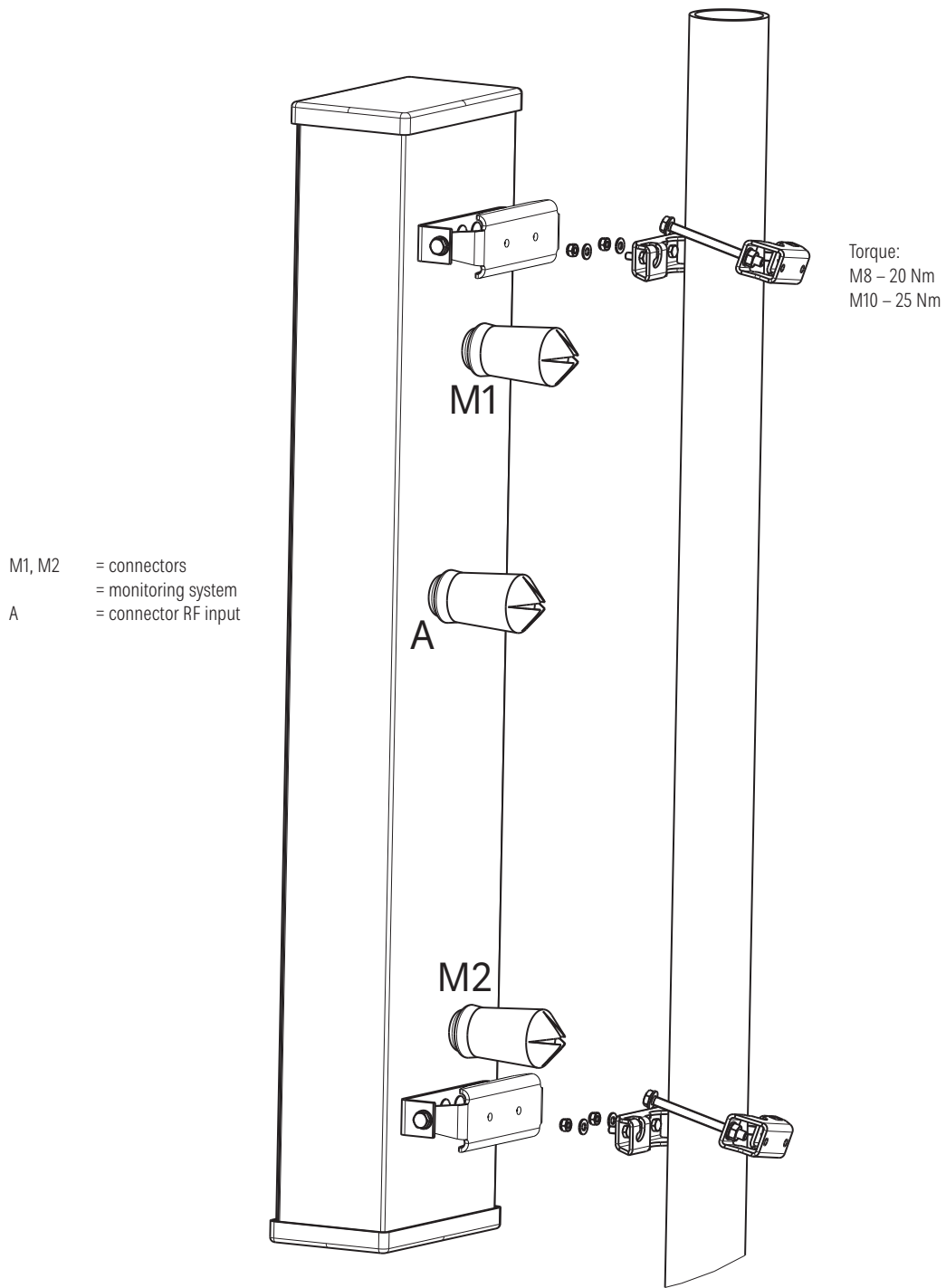


Horizontal Radiation Pattern



Vertical Radiation Pattern

Mounting Instruction



Accessories

Type No.	Description	Remarks	Weight approx.	Units per antenna
738546	1 clamp	Mast: 42–115 mm diameter	1.1 kg	2 (included in the scope of supply)

For other special items consult our customer support: support@kathrein-bca.com